

Annual Financial Report Accuracy Certification Statement

For Fiscal Year Ending
6/30/2017

Pennsylvania Department of Education
&
Office of Comptroller Operations

PDE-2056: Intermediate Unit

PDE-2057: School District, AVTS/CTC, Charter School,
and Special Program Jointure

CERTIFICATION: By signing this page I agree that the electronic data submitted is a complete and accurate statement of the financial operations and status of the local education agency for the fiscal year. It has been prepared in accordance with generally accepted accounting principles and established Commonwealth of PA reporting guidelines.

Chief School Administrator Signature

Date

[Signature] 1/31/18

Board Secretary Signature

Date

1/31/18

David J Marsiglio

Contact Person

dmarsiglio@bloomsd.k12.pa.us

Contact Person E-mail Address

(570)784-5000

Ext :

Contact Person Telephone Number

Contact Person Fax Number

Audit Certification
Annual Financial Report:
For Fiscal Year Ending **6/30/2017**
(Pursuant to PA School Code Section 218(b))

LEA Name : Bloomsburg Area SD
AUN Number : 116191203
County : Columbia

Audit Certification Due: 12/31/2017

This certification is applicable to the Annual Financial Report data submitted through the Consolidated Financial Reporting System on: 1/31/18
Date

Auditing Firm: WAGNER, DREESE, ELASSER & ASSOCIATES, PC

Auditor Contact Name: MICHAEL L. FULLER, CPA
Auditor Phone: 717-979-2062
Auditor E-mail: mfuller@wdeapc.com

CERTIFICATION: By signing this page I agree that the financial statements of the school have been properly audited as noted above pursuant to Article XIV, and in the auditor's professional opinion, the Annual Financial Report (PDE-2057) submitted on the date referenced is materially consistent with the audited financial statements.

Chief School Administrator

Signature

Date

Board Secretary

Signature

Date

David J Marsiglio

Contact Person

dmarsiglio@bloomsd.k12.pa.us

Contact Person E-mail Address

(570)784-5000

Ext :

Contact Person Telephone Number

Contact Person Fax Number

Annual Financial Report Accuracy Certification Statement

For Fiscal Year Ending
6/30/2017

Pennsylvania Department of Education
&
Office of Comptroller Operations

PDE-2056: Intermediate Unit
PDE-2057: School District, AVTS/CTC, Charter School,
and Special Program Jointure

CERTIFICATION: By signing this page I agree that the electronic data submitted is a complete and accurate statement of the financial operations and status of the local education agency for the fiscal year. It has been prepared in accordance with generally accepted accounting principles and established Commonwealth of PA reporting guidelines.

Chief School Administrator Signature

Date

[Signature] 1/31/18

Board Secretary Signature

Date

1/31/18

David J Marsiglio

Contact Person

dmarsiglio@bloomsd.k12.pa.us

Contact Person E-mail Address

(570)784-5000

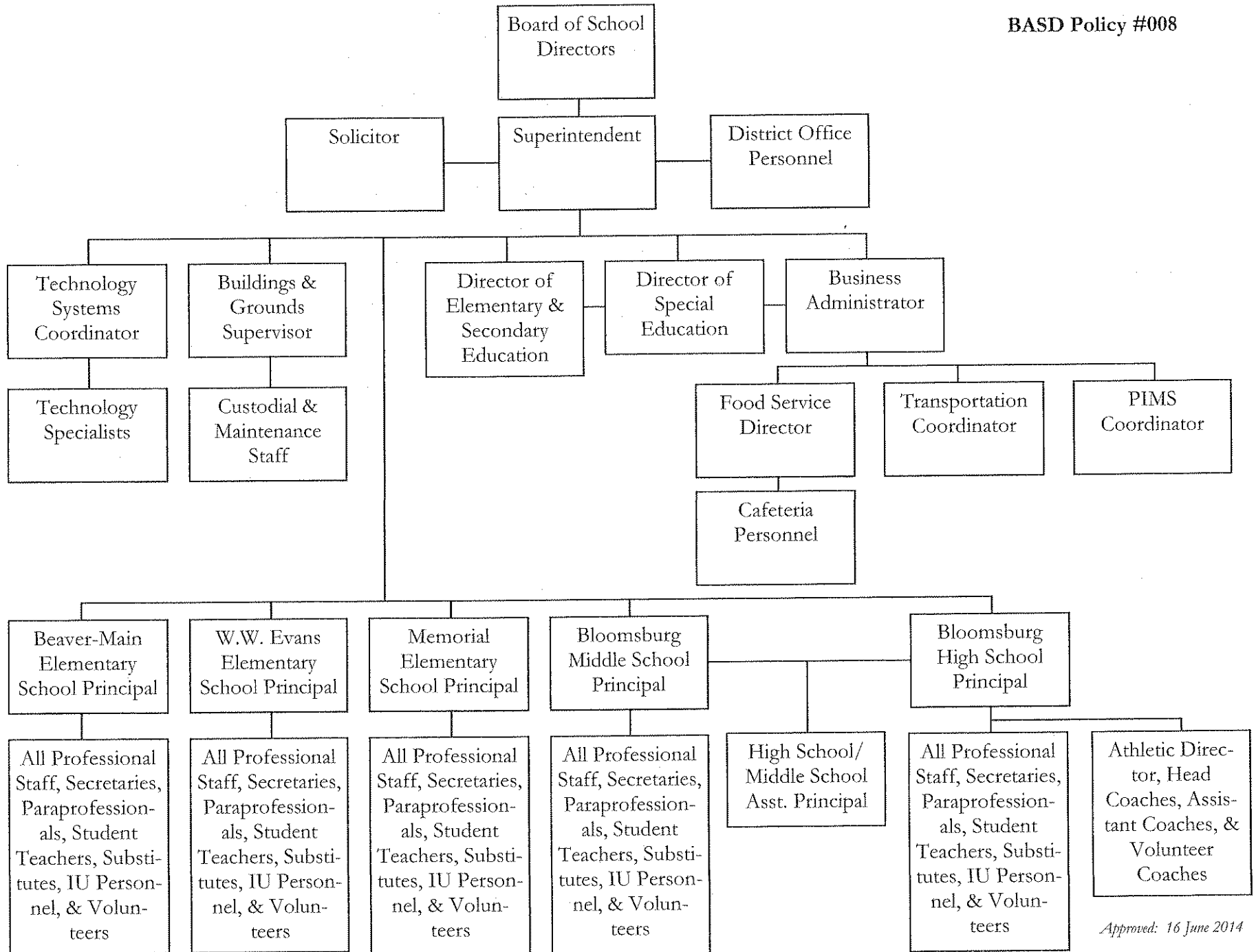
Ext :

Contact Person Telephone Number

Contact Person Fax Number

**Bloomsburg Area School District
Organization Chart**

BASD Policy #008



Approved: 16 June 2014

<u>Val Number</u>	<u>Description</u>	<u>Justification</u>
50450	<p>SESS - 2350 Legal and Accounting Services: SESS Schedule amounts for Special Education vary from prior year by 40% or more. Correct the data or enter a justification.</p> <p>SESS Schedule 2350: \$339.00 Prior Year SESS Schedule 2350: \$1,745.50</p>	<p>Special Education Legal Service were not in demand. Amount of \$339.00 is properly recorded.</p>

Amounts Expressed in Whole Dollars

<u>General Fund</u>	<u>Public Purpose Trust</u>	<u>Other Compt Approved</u>	<u>Athletic / Activity</u>	<u>Capital Reserve (690.</u>
<u>(10)</u>	<u>(27)</u>	<u>(28)</u>	<u>(29)</u>	<u>1850)</u>
				<u>(31)</u>

Assets And Deferred Outflows Of Resources

Assets

0100 Cash and Cash Equivalents	14,010,556
0110 Investments	2,067,628
0120 Taxes Receivable	613,440
0130 Due From Other Funds	288
0141 Due From Other Governments	
0142 State Revenue Receivable	500,314
0143 Federal Revenue Receivable	2,348
0145 Other Intergovernmental Revenue Receivable	
0146 Due from Primary Government	
0147 Due from Component Unit	
0150 Other Receivables	189,474
0170 Inventories	
0180 Prepaid Expenses (Expenditures)	
0190 Other Current Assets	

Total Assets \$17,384,048

0910 Deferred Outflows of Resources

Total Assets And Deferred Outflows Of Resources \$17,384,048

Amounts Expressed in Whole Dollars

	<u>Capital Reserve (1431)</u> <u>(32)</u>	<u>Other Capital Projects</u> <u>Fund</u> <u>(39)</u>	<u>Debt Service</u> <u>(40)</u>	<u>Permanent</u> <u>(90)</u>	<u>Total Governmental</u> <u>Funds</u>
Assets And Deferred Outflows Of Resources					
Assets					
0100 Cash and Cash Equivalents	1,421,188	1,323	30		15,433,097
0110 Investments					2,067,628
0120 Taxes Receivable					613,440
0130 Due From Other Funds					288
0141 Due From Other Governments					
0142 State Revenue Receivable					500,314
0143 Federal Revenue Receivable					2,348
0145 Other Intergovernmental Revenue Receivable					
0146 Due from Primary Government					
0147 Due from Component Unit					
0150 Other Receivables					189,474
0170 Inventories					
0180 Prepaid Expenses (Expenditures)					
0190 Other Current Assets					
Total Assets	\$1,421,188	\$1,323	\$30		\$18,806,589
0910 Deferred Outflows of Resources					
Total Assets And Deferred Outflows Of Resources	\$1,421,188	\$1,323	\$30		\$18,806,589

Amounts Expressed in Whole Dollars	<u>General Fund</u> <u>(10)</u>	<u>Public Purpose Trust</u> <u>(27)</u>	<u>Other Compt Approved</u> <u>(28)</u>	<u>Athletic / Activity</u> <u>(29)</u>	<u>Capital Reserve (690.</u> <u>1850)</u> <u>(31)</u>
Liabilities And Deferred Inflows Of Resources And Fund Balances					
Liabilities					
0400 Due to Other Funds	48,339				
0411 Due to Other Governments					
0412 Due to Primary Government					
0413 Due to Component Unit					
0420 Accounts Payable	319,928				
0430 Contracts Payable					
0440 Current Portion of Long-Term Debt					
0450 Short-Term Payables					
0461 Accrued Salaries and Benefits	2,318,938				
0462 Payroll Deductions and Withholding	204,566				
0480 Unearned Revenues	613,440				
0490 Other Current Liabilities					
Total Liabilities	\$3,505,211				
0950 Deferred Inflows of Resources					
Fund Balances					
0810 Nonspendable Fund Balance					
0820 Restricted Fund Balance					
0830 Committed Fund Balance	10,721,262				
0840 Assigned Fund Balance					
0850 Unassigned Fund Balance	3,157,575				
Total Fund Balances	\$13,878,837				
Total Liabilities, Deferred Inflows Of Resources And Fund Balances	\$17,384,048				

Amounts Expressed in Whole Dollars	<u>Capital Reserve (1431)</u> <u>(32)</u>	<u>Other Capital Projects</u> <u>Fund</u> <u>(39)</u>	<u>Debt Service</u> <u>(40)</u>	<u>Permanent</u> <u>(90)</u>	<u>Total Governmental</u> <u>Funds</u>
Liabilities And Deferred Inflows Of Resources And Fund Balances					
Liabilities					
0400 Due to Other Funds					48,339
0411 Due to Other Governments					
0412 Due to Primary Government					
0413 Due to Component Unit					
0420 Accounts Payable					319,928
0430 Contracts Payable					
0440 Current Portion of Long-Term Debt					
0450 Short-Term Payables					
0461 Accrued Salaries and Benefits					2,318,938
0462 Payroll Deductions and Withholding					204,566
0480 Unearned Revenues					613,440
0490 Other Current Liabilities					
Total Liabilities					\$3,505,211
0950 Deferred Inflows of Resources					
Fund Balances					
0810 Nonspendable Fund Balance					
0820 Restricted Fund Balance		1,323	30		1,353
0830 Committed Fund Balance					10,721,262
0840 Assigned Fund Balance	1,421,188				1,421,188
0850 Unassigned Fund Balance					3,157,575
Total Fund Balances	\$1,421,188	\$1,323	\$30		\$15,301,378
Total Liabilities, Deferred Inflows Of Resources And Fund Balances	\$1,421,188	\$1,323	\$30		\$18,806,589

Amounts Expressed in Whole Dollars	<u>General Fund</u> <u>(10)</u>	<u>Public Purpose Trust</u> <u>(27)</u>	<u>Other Compt Approved</u> <u>(28)</u>	<u>Athletic / Activity</u> <u>(29)</u>	<u>Capital Reserve (690.</u> <u>1850)</u> <u>(31)</u>
Revenues					
6000 Revenue from Local Sources	14,100,398				
7000 Revenue from State Sources	9,828,183				
8000 Revenue from Federal Sources	525,386				
Total Revenues	\$24,453,967				
Expenditures					
1000 Instruction	13,950,805				
2000 Support Services	7,396,646				
3000 Operation of Non-Instructional Services	634,794				
4000 Facilities Acquisition, Construction and Improvement Services					
5110 Debt Service	64,261				
5130 Refund of Prior Year Revenues / Receipts					
Total Expenditures	\$22,046,506				
Excess (Deficiency) Of Revenues Over Expenditures	\$2,407,461				
Other Financing Sources (Uses)					
9110 Face Value of Bonds Issued					
9120 Proceeds from Refunding of Bonds					
9130 Bond Premiums					
9200 Proceeds from Extended-Term Financing					
9300 Interfund Transfers - IN					
9400 Sale of or Compensation for Loss of Fixed Assets					
9710 Transfers from Component Units					
9720 Transfers from Primary Governments					
9910 Other Financing Sources Not Listed in the 9000 Series					
9990 Insurance Recoveries					
5120 Debt Service – Refunded Bonds					
5150 Bond Discounts					
5200 Interfund Transfers – Out	2,046,840				
5300 Transfers Out to Component Units/Primary Governments					
Total Other Financing Sources (Uses)	(\$2,046,840)				

Amounts Expressed in Whole Dollars	<u>Capital Reserve (1431)</u> <u>(32)</u>	<u>Other Capital Projects</u> <u>Fund</u> <u>(39)</u>	<u>Debt Service</u> <u>(40)</u>	<u>Permanent</u> <u>(90)</u>	<u>Total Governmental</u> <u>Funds</u>
Revenues					
6000 Revenue from Local Sources	6,391	3	15		14,106,807
7000 Revenue from State Sources					9,828,183
8000 Revenue from Federal Sources					525,386
Total Revenues	\$6,391	\$3	\$15		\$24,460,376
Expenditures					
1000 Instruction					13,950,805
2000 Support Services	11,529		950		7,409,125
3000 Operation of Non-Instructional Services	36,889				671,683
4000 Facilities Acquisition, Construction and Improvement Services	17,722				17,722
5110 Debt Service			1,843,375		1,907,636
5130 Refund of Prior Year Revenues / Receipts					
Total Expenditures	\$66,140		\$1,844,325		\$23,956,971
Excess (Deficiency) Of Revenues Over Expenditures	(\$59,749)	\$3	(\$1,844,310)		\$503,405
Other Financing Sources (Uses)					
9110 Face Value of Bonds Issued					
9120 Proceeds from Refunding of Bonds					
9130 Bond Premiums					
9200 Proceeds from Extended-Term Financing					
9300 Interfund Transfers - IN	200,000		1,844,325		2,044,325
9400 Sale of or Compensation for Loss of Fixed Assets					
9710 Transfers from Component Units					
9720 Transfers from Primary Governments					
9910 Other Financing Sources Not Listed in the 9000 Series					
9990 Insurance Recoveries					
5120 Debt Service – Refunded Bonds					
5150 Bond Discounts					
5200 Interfund Transfers – Out					2,046,840
5300 Transfers Out to Component Units/Primary Governments					
Total Other Financing Sources (Uses)	\$200,000		\$1,844,325		(\$2,515)

Amounts Expressed in Whole Dollars	<u>General Fund</u> <u>(10)</u>	<u>Public Purpose Trust</u> <u>(27)</u>	<u>Other Compt Approved</u> <u>(28)</u>	<u>Athletic / Activity</u> <u>(29)</u>	<u>Capital Reserve</u> <u>(690.</u> <u>1850)</u> <u>(31)</u>
Special And Extraordinary Items					
9920 Special Items – Gains					
9930 Extraordinary Items – Gains					
5520 Special Items – Losses					
5530 Extraordinary Items – Losses					
Net Change In Fund Balances	\$360,621				
Fund Balance					
0001 Fund Balance - Beginning of Fiscal Year	13,518,214				
Fund Balance - End Of Year	\$13,878,835				

Amounts Expressed in Whole Dollars	<u>Capital Reserve (1431)</u> <u>(32)</u>	<u>Other Capital Projects</u> <u>Fund</u> <u>(39)</u>	<u>Debt Service</u> <u>(40)</u>	<u>Permanent</u> <u>(90)</u>	<u>Total Governmental</u> <u>Funds</u>
Special And Extraordinary Items					
9920 Special Items – Gains					
9930 Extraordinary Items – Gains					
5520 Special Items – Losses					
5530 Extraordinary Items – Losses					
Net Change In Fund Balances	\$140,251	\$3	\$15		\$500,890
Fund Balance					
0001 Fund Balance - Beginning of Fiscal Year	1,280,937	1,320	15		14,800,486
Fund Balance - End Of Year	\$1,421,188	\$1,323	\$30		\$15,301,376

Amounts Expressed in Whole Dollars	<u>Food Service</u> <u>(51)</u>	<u>Child Care</u> <u>Operations</u> <u>(52)</u>	<u>Other Enterprise</u> <u>(58)</u>	<u>TOTAL</u>	<u>Internal Service</u> <u>(60)</u>
Assets And Deferred Outflows Of Resources					
Current Assets					
0100 Cash and Cash Equivalents	221,740			221,740	
0110 Investments					
0130 Due From Other Funds	46,775			46,775	
0141 Due From Other Governments	19,607			19,607	
0142 State Revenue Receivable					
0143 Federal Revenue Receivable					
0146 Due from Primary Government					
0147 Due from Component Unit					
0150 Other Receivables					
0170 Inventories	25,286			25,286	
0180 Prepaid Expenses (Expenditures)					
0190 Other Current Assets					
Total Current Assets	\$313,408			\$313,408	
Noncurrent Assets					
0211 Land					
0212 Site Improvements (Net)					
0220 Buildings and Building Improvements (Net)	6,090			6,090	
0230 Machinery, Equipment and Furniture (Net)	59,187			59,187	
0250 Construction in Progress					
0260 Long Term Prepayments					
0290 Other Noncurrent Assets					
Total Noncurrent Assets	\$65,277			\$65,277	
0910 Deferred Outflows of Resources					
Total Assets And Deferred Outflows Of Resources	\$378,685			\$378,685	

Amounts Expressed in Whole Dollars	<u>Food Service</u> <u>(51)</u>	<u>Child Care</u> <u>Operations</u> <u>(52)</u>	<u>Other Enterprise</u> <u>(58)</u>	<u>TOTAL</u>	<u>Internal Service</u> <u>(60)</u>
Liabilities And Deferred Inflows Of Resources And Net Position					
Current Liabilities					
0400 Due to Other Funds	(2,515)			(2,515)	
0411 Due to Other Governments					
0413 Due to Component Unit					
0420 Accounts Payable					
0430 Contracts Payable					
0440 Current Portion of Long-Term Debt					
0450 Short-Term Payables					
0461 Accrued Salaries and Benefits	44,592			44,592	
0462 Payroll Deductions and Withholding					
0480 Unearned Revenues	11,478			11,478	
0490 Other Current Liabilities					
Total Current Liabilities	\$53,555			\$53,555	
Noncurrent Liabilities					
0510 Bonds Payable					
0520 Extended-Term Financing Agreements Payable					
0530 Lease-Purchase Obligations					
0540 Accumulated Compensated Absences					
0550 Authority Lease Obligations					
0560 Other Post-Employment Benefits (OPEB)					
0570 Net Pension Liability					
0599 Other Noncurrent Liabilities					
Total Noncurrent Liabilities					
Total Liabilities	\$53,555			\$53,555	
0950 Deferred Inflows of Resources					
Net Position					
0791 Net Investment in Capital Assets	65,277			65,277	
0008 Restricted Net Position (0792 – 0798)					
0799 Unrestricted Net Position	259,853			259,853	
Total Net Position	\$325,130			\$325,130	
Total Liabilities And Deferred Inflows Of Resources And Net Position	\$378,685			\$378,685	

Amounts Expressed in Whole Dollars	<u>Food Service</u> <u>(51)</u>	<u>Child Care Operations</u> <u>(52)</u>	<u>Other Enterprise</u> <u>(58)</u>	<u>TOTAL</u>	<u>Internal Service</u> <u>(60)</u>
Operating Revenues					
6600 Food Service Revenue	242,834			242,834	
0071 Charges for Services					
0072 Other Operating Revenue					
Total Operating Revenues	\$242,834			\$242,834	
Operating Expenses					
100 Personnel Services – Salaries	252,584			252,584	
200 Personnel Services – Employee Benefits	173,246			173,246	
300 Purchased Professional and Technical Services					
400 Purchased Property Services	2,896			2,896	
500 Other Purchased Services					
600 Supplies	333,092			333,092	
740 Depreciation	12,502			12,502	
810 Dues and Fees	5,807			5,807	
890 Miscellaneous Expenditures					
Total Operating Expenses	\$780,127			\$780,127	
Operating Income (Loss)	(\$537,293)			(\$537,293)	
Non Operating Revenues (Expenses)					
6500 Earnings on Investments	121			121	
6920 Contributions and Donations from Private Sources					
6930 Gains or Losses on Sale of Fixed Assets					
6991 Refunds of a Prior Year Expenditure					
7000 Revenue from State Sources	74,134			74,134	
8000 Revenue from Federal Sources	459,615			459,615	
820 Claims and Judgments Against the LEA					
830 Interest					
TOTAL Non Operating Revenues (Expenses)	\$533,870			\$533,870	
Income (Loss) Before Contributions And Transfers	(\$3,423)			(\$3,423)	

Amounts Expressed in Whole Dollars	<u>Food Service</u> <u>(51)</u>	<u>Child Care Operations</u> <u>(52)</u>	<u>Other Enterprise</u> <u>(58)</u>	<u>TOTAL</u>	<u>Internal Service</u> <u>(60)</u>
Contributions, Transfers, and Special and Extraordinary Items					
5200 Interfund Transfers – Out					
5300 Transfers Out to Component Units/Primary Governments					
5520 Special Items – Losses					
5530 Extraordinary Items – Losses					
9300 Interfund Transfers - IN	2,515			2,515	
9500 Capital Contributions					
9700 Transfers IN From Component Units/Primary Governments					
9920 Special Items – Gains					
9930 Extraordinary Items – Gains					
Change In Net Position	(\$908)			(\$908)	
0002 Net Position - Beginning of Fiscal Year	326,038			326,038	
0003 Accounting Changes / Residual Equity Transfers					
Net Position - End Of Year	\$325,130			\$325,130	

Amounts Expressed in Whole Dollars	<u>Food Service</u> <u>(51)</u>	<u>Child Care Operations</u> <u>(52)</u>	<u>Other Enterprise</u> <u>(58)</u>	<u>TOTAL</u>	<u>Internal Service(60)</u>
Cash Flows From Operating Activities					
0011 Cash Receipts From Users	239,118			239,118	
0012 Cash Receipts From Assessments Made to Other Funds					
0013 Cash Receipts From Earnings on Investments					
0014 Cash Receipts From Other Operating Revenue					
0015 Cash Payments To Employees For Services	428,314			428,314	
0016 Cash Payments For Insurance Claims					
0017 Cash Payments To Suppliers For Goods and Services	275,857			275,857	
0018 Cash Payments For Other Operating Expenses	5,807			5,807	
Net Cash Provided By (Used For) Operating Activities	(\$470,860)			(\$470,860)	
Cash Flows From Non-Capital Financing Activities					
0021 Receipts From Local Sources - 6000					
0022 Receipts From State Sources - 7000	73,020			73,020	
0023 Receipts From Federal Sources -8000	379,913			379,913	
0024 Notes and Loans Received (Repaid)					
0025 Interest Paid on Notes/Loans - 5100-830					
0026 Operating Transfers In (Out)/Residual Equity Trans					
0027 Operating Transfers In (Out) Primary Government / Comp Unit					
0028 Receipts From Refund of Prior Year Expenditures - 6991					
0029 Special and Extraordinary Gains (losses)					
Net Cash Prov By (Used for) Non-Capital Financing Activities	\$452,933			\$452,933	
Cash Flows From Capital and Related Financing Activities					
0031 Payments For Fac Acq, Const, and Imp - 4000	(4,541)			(4,541)	
0032 Gain / (Loss) on Sale of Fixed Assets - 6930					
0033 Proceeds From Extended Term Financing - 9200					
0034 Principal Paid on Financing Agreements					
0035 Interest Paid on Financing Agreements - 5100-830					
0036 (Inc) Dec in Contributed Capital					
Net Cash Prov By (Used for) Capital and Related Financing Activities	(\$4,541)			(\$4,541)	
Cash Flows From Investing Activities					
0041 Earnings on Investments - 6500	121			121	
0042 Purchase of Inv Securities / Deposits to Inv Pools					
0043 Receipts From Investment Pool Withdrawals					
0044 Proceeds from Sale and Maturity of Inv Securities					
0045 Loans Received (Paid)					
Net Cash Prov By (Used for) Investing Activities	\$121			\$121	

	<u>Food Service</u> <u>(51)</u>	<u>Child Care Operations</u> <u>(52)</u>	<u>Other Enterprise</u> <u>(58)</u>	<u>TOTAL</u>	<u>Internal Service</u> <u>(60)</u>
Net Increase (Decrease) in Cash Flows	(22,347)			(22,347)	
0004 Cash and Cash Equivalents Beginning of Year	244,087			244,087	
Cash and Cash Equivalents at Year End	\$221,740			\$221,740	
<hr/>					
Reconciliation of Operating Income (Loss) To Net Cash Provided by (Used For) Operating Activities					
0005 Operating Income (Loss) per REP	(537,293)			(537,293)	
Adjustments					
0051 Depreciation and Net Amortization	12,502			12,502	
0052 Provision for Uncollectible Accounts					
0053 Other Adjustments					
Effect of Changes in Assets, Liabilities, Deferred Outflows and Deferred Inflows					
0054 (Inc) Dec In Accounts Receivable (0120-0150)	(2,500)			(2,500)	
0055 Advances to Other Funds (0160)					
0056 (Inc) Dec in Inventories (0170)	(1,022)			(1,022)	
0057 (Inc) Dec in Prepaid Expenses (0180)					
0058 (Inc) Dec in Other Current or Noncurrent Assets	63,724			63,724	
0064 Deferred Outflows (0910)					
0059 Inc (Dec) in Accounts Payable (0400-0450)	(2,571)			(2,571)	
0060 Inc (Dec) in Accrued Salaries/Benefits (0461)	16			16	
0065 Inc (Dec) in Net Pension Liabilities (0570)					
0066 Inc (Dec) in Other Postemp Benefit Oblig (0560)					
0061 Inc (Dec) in Payroll Deductions/Withholding (0462)					
0062 Inc (Dec) in Unearned Revenue (0480)	(3,716)			(3,716)	
0063 Inc (Dec) in Other Current or Noncurrent Liabilities					
0067 Deferred Inflows (0950)					
Total Adjustments	\$66,433			\$66,433	
Cash Provided By (Used for) Total	(\$470,860)			(\$470,860)	

**COMBINED STATEMENT OF CASH FLOWS
SCHEDULE OF NONCASH INVESTING, CAPITAL, AND FINANCING ACTIVITIES**

Explanation of Transaction and Balance Sheet Effect	Amount
Total	

LEA : 116191203 Bloomsburg Area SD

Printed 2/1/2018 9:44:22 AM

Amounts Expressed in Whole Dollars

	<u>Private Purpose Trust</u> (71)	<u>Investment Trust</u> (72)	<u>Pension Trust</u> (73)	<u>Activity</u> (81)
Assets And Deferred Outflows Of Resources				
Assets				
0100 Cash and Cash Equivalents	273,516			159,659
0110 Investments				
0130 Due From Other Funds				
0147 Due from Component Unit				
0150 Other Receivables				
0170 Inventories				
0180 Prepaid Expenses (Expenditures)				
0190 Other Current Assets				
0220 Buildings and Building Improvements (Net)				
0230 Machinery, Equipment and Furniture (Net)				
Total Assets	\$273,516			\$159,659
0910 Deferred Outflows of Resources				
Total Assets And Deferred Outflows Of Resources	\$273,516			\$159,659

LEA : 116191203 Bloomsburg Area SD

Printed 2/1/2018 9:44:22 AM

Amounts Expressed in Whole Dollars

	<u>Other Agency</u> <u>(89)</u>	<u>Discrete Component Units</u> <u>(98)</u>	<u>Discrete Component Units</u> <u>(99)</u>	<u>Total Fiduciary Funds</u>
Assets And Deferred Outflows Of Resources				
Assets				
0100 Cash and Cash Equivalents				433,175
0110 Investments				
0130 Due From Other Funds				
0147 Due from Component Unit				
0150 Other Receivables				
0170 Inventories				
0180 Prepaid Expenses (Expenditures)				
0190 Other Current Assets				
0220 Buildings and Building Improvements (Net)				
0230 Machinery, Equipment and Furniture (Net)				
Total Assets				\$433,175
0910 Deferred Outflows of Resources				
Total Assets And Deferred Outflows Of Resources				\$433,175

LEA : 116191203 Bloomsburg Area SD

Printed 2/1/2018 9:44:22 AM

Amounts Expressed in Whole Dollars	<u>Private Purpose Trust</u> (71)	<u>Investment Trust</u> (72)	<u>Pension Trust</u> (73)	<u>Activity</u> (81)
Liabilities, Deferred Inflows Of Resources And Net Position				
Liabilities				
0400 Due to Other Funds				
0411 Due to Other Governments				
0412 Due to Primary Government				
0413 Due to Component Unit				
0420 Accounts Payable				159,659
0430 Contracts Payable				
0450 Short-Term Payables				
0461 Accrued Salaries and Benefits				
0462 Payroll Deductions and Withholding				
0480 Unearned Revenues				
0490 Other Current Liabilities				
Total Liabilities				\$159,659
0950 Deferred Inflows of Resources				
Net Position				
0791 Net Investment in Capital Assets				
0009 Restricted Net Position (0792 – 0798)	273,516			
0799 Unrestricted Net Position				
Total Net Position	\$273,516			
Total Liabilities, Deferred Inflows Of Resources And Net Position	\$273,516			\$159,659

LEA : 116191203 Bloomsburg Area SD

Printed 2/1/2018 9:44:22 AM

Amounts Expressed in Whole Dollars	<u>Other Agency</u> (89)	<u>Discrete Component Units</u> (98)	<u>Discrete Component Units</u> (99)	<u>Total Fiduciary Funds</u>
Liabilities, Deferred Inflows Of Resources And Net Position				
Liabilities				
0400 Due to Other Funds				
0411 Due to Other Governments				
0412 Due to Primary Government				
0413 Due to Component Unit				
0420 Accounts Payable				159,659
0430 Contracts Payable				
0450 Short-Term Payables				
0461 Accrued Salaries and Benefits				
0462 Payroll Deductions and Withholding				
0480 Unearned Revenues				
0490 Other Current Liabilities				
Total Liabilities				\$159,659
0950 Deferred Inflows of Resources				
Net Position				
0791 Net Investment in Capital Assets				
0009 Restricted Net Position (0792 – 0798)				273,516
0799 Unrestricted Net Position				
Total Net Position				\$273,516
Total Liabilities, Deferred Inflows Of Resources And Net Position				\$433,175

Amounts Expressed in Whole Dollars	<u>Private Purpose Trust</u> <u>(71)</u>	<u>Investment Trust</u> <u>(72)</u>	<u>Pension Trust</u> <u>(73)</u>	<u>Discrete Component</u> <u>Units</u> <u>(98)</u>	<u>Discrete Component</u> <u>Units</u> <u>(99)</u>	<u>Total Fiduciary</u> <u>Funds</u>
Additions						
0091 Gifts and Contributions	21,767					21,767
0092 Other Additions	190					190
Deductions						
0093 Scholarships Awarded	24,292					24,292
0094 Other Deductions						
Change In Net Position	(\$2,335)					(\$2,335)
0006 Net Position – Beginning of Fiscal Year	275,851					275,851
0007 Net Position Held in Trust for Pension Benefits						
Net Position - End of Fiscal Year	\$273,516					\$273,516

	<u>Revenue Reported In Current Year</u>	<u>Current Year Tax Accrual</u>	<u>Prior Year Tax Accrual</u>	<u>Taxes Collected In Current Year</u>
<u>Revenue from Local Sources</u>				
6111 Current Real Estate Taxes	9,534,134.27			9,534,134.27
6112 Interim Real Estate Taxes	15,379.93			15,379.93
6113 Public Utility Realty Taxes	14,363.87			14,363.87
6114 Payments in Lieu of Current Taxes - State / Local	112,658.02			112,658.02
6120 Current Per Capita Taxes, Section 679	28,563.90			28,563.90
6141 Current Act 511 Per Capita Taxes	28,563.90			28,563.90
6143 Current Act 511 Local Services Taxes	51,301.48			51,301.48
6151 Current Act 511 Earned Income Taxes	3,064,630.55			3,064,630.55
6153 Current Act 511 Real Estate Transfer Taxes	220,497.90			220,497.90
6411 Delinquent Real Estate Taxes	470,200.23			470,200.23
6420 Delinquent Per Capita Taxes, Section 679	6,707.40			6,707.40
6440 Delinquent Local Enabling Taxes - Flat Rate Assessments	6,707.40			6,707.40
6500 Earnings on Investments	96,479.77			
6700 Revenues from LEA Activities	52,133.97			
6832 Federal IDEA Revenue Received as Pass Through	232,496.38			
6910 Rentals	15,377.50			
6920 Contributions and Donations from Private Sources	111,083.62			
6941 Regular Day School Tuition	7,348.59			
6944 Receipts from Other LEAs in Pennsylvania - Education	24,879.04			
6991 Refunds of a Prior Year Expenditure	540.63			
6999 Other Revenues Not Specified Above	6,350.11			
TOTAL Revenue from Local Sources	\$14,100,398.46			\$13,553,708.85

**Revenue Reported
In Current Year**

Revenue from State Sources

7110 Basic Education Funding	5,658,765.10		
7160 Tuition for Orphans Subsidy	30,266.59		
7240 Driver Education - Student	2,485.00		
7271 Special Education funds for School-Aged Pupils	970,416.50		
7311 Pupil Transportation Subsidy	340,986.59		
7312 Nonpublic and Charter School Pupil Transportation Subsidy	22,330.00		
7320 Rental and Sinking Fund Payments / Building Reimbursement Subsidy	348,427.82		
7330 Health Services (Medical, Dental, Nurse, Act 25)	30,680.24		
7340 State Property Tax Reduction Allocation	487,326.35		
7505 Ready to Learn Block Grant	234,078.00		
7810 State Share of Social Security and Medicare Taxes	296,205.54		
7820 State Share of Retirement Contributions	1,406,215.26		
TOTAL Revenue from State Sources	\$9,828,182.99		

**Revenue Reported
In Current Year**

Revenue from Federal Sources

8514 NCLB, Title I - Improving the Academic Achievement of the Disadvantaged	362,841.00		
8515 NCLB, Title II - Preparing, Training and Recruiting High Quality Teachers and Principals	80,060.00		
8810 School-Based Access Medicaid Reimbursement Program (SBAP) Reimbursements (Access)	77,737.20		
8820 Medical Assistance Reimbursement for Administrative Claiming (Quarterly) Program	4,747.46		
TOTAL Revenue from Federal Sources	\$525,385.66		
TOTAL FROM ALL SOURCES	\$24,453,967.11		\$13,553,708.85

Revenue from Local Sources	14,100,398.46
Revenue from State Sources	9,828,182.99
Revenue from Federal Sources	525,385.66
Other Financing Sources	
TOTAL FROM ALL SOURCES	\$24,453,967.11

General Fund (10)

	<u>Total</u>
1000 Instruction	
100 Personnel Services – Salaries	
100 Personnel Services – Salaries	7,164,411.42
Total Personnel Services – Salaries	\$7,164,411.42
200 Personnel Services – Employee Benefits	
210 Group Insurance – Contracted Provider	1,510,930.76
220 Social Security Contributions	538,271.81
230 PSERS Retirement Contributions	2,146,805.00
250 Unemployment Compensation	23,970.77
260 Workers’ Compensation	96,495.00
Total Personnel Services – Employee Benefits	\$4,316,473.34
300 Purchased Professional and Technical Services	
322 Professional Educational Services – Ius	238,672.05
324 Professional Educational Services – Employee Training and Development Services	5,043.33
330 Other Professional Services	48,749.25
Total Purchased Professional and Technical Services	\$292,464.63
400 Purchased Property Services	
430 Repairs and Maintenance Services	5,349.06
440 Rentals	35,105.97
Total Purchased Property Services	\$40,455.03
500 Other Purchased Services	
510 Student Transportation Services	22,522.11
530 Communications	4.52
550 Printing and Binding	188.10
561 Tuition To Other School Districts Within the State	216,136.69
562 Tuition To Pennsylvania Charter Schools	316,721.81
564 Tuition To Career and Technology Centers	820,272.00
567 Tuition To Approved Private Schools (APS) and PA Chartered Schools for the Deaf and Blind	9,819.48
568 Tuition To Private Residential Rehabilitative Institutions (PRRI) [In-State] and Detention Centers	50,842.35
569 Tuition – Other	351,362.53
580 Travel	7,049.37
599 Other Miscellaneous Purchased Services	818.94
Total Other Purchased Services	\$1,795,737.90
600 Supplies	
610 General Supplies	208,474.95
620 Energy	480.28
630 Food	865.21
640 Books and Periodicals	102,571.71
650 Supplies & Fees – Technology Related	837.07
Total Supplies	\$313,229.22
700 Property	
752 Capital Equipment – Original and Additional	15,341.60
Total Property	\$15,341.60

General Fund (10)

1000 Instruction	<u>Total</u>
800 <u>Other Objects</u>	
810 Dues and Fees	2,996.75
890 Miscellaneous Expenditures	9,695.00
Total Other Objects	\$12,691.75
Total 1000 Instruction	\$13,950,804.89

General Fund (10)

1100 Regular Programs – Elementary / Secondary

100 Personnel Services – Salaries

	<u>Elementary</u>	<u>Secondary</u>	<u>Federal</u>	<u>Total</u>
100 Personnel Services – Salaries	3,064,972.71	2,337,872.84	313,507.16	5,716,352.71
Total Personnel Services – Salaries	\$3,064,972.71	\$2,337,872.84	\$313,507.16	\$5,716,352.71

200 Personnel Services – Employee Benefits

210 Group Insurance – Contracted Provider	673,344.63	488,513.65	46,985.48	1,208,843.76
220 Social Security Contributions	236,384.77	173,886.62	15,862.67	426,134.06
230 PSERS Retirement Contributions	948,549.91	701,271.98	64,085.17	1,713,907.06
250 Unemployment Compensation	11,266.26	12,704.51		23,970.77
260 Workers' Compensation	45,352.65	51,142.35		96,495.00
Total Personnel Services – Employee Benefits	\$1,914,898.22	\$1,427,519.11	\$126,933.32	\$3,469,350.65

300 Purchased Professional and Technical Services

322 Professional Educational Services – lus	115.89	130.68		246.57
324 Professional Educational Services – Employee Training and Development Services	2,157.60	1,695.40		3,853.00
Total Purchased Professional and Technical Services	\$2,273.49	\$1,826.08		\$4,099.57

400 Purchased Property Services

430 Repairs and Maintenance Services	1,956.79	2,956.88		4,913.67
440 Rentals	23,300.17	11,805.80		35,105.97
Total Purchased Property Services	\$25,256.96	\$14,762.68		\$40,019.64

500 Other Purchased Services

510 Student Transportation Services	16,475.97	5,106.60		21,582.57
530 Communications	1.49	3.03		4.52
550 Printing and Binding	188.10			188.10
561 Tuition To Other School Districts Within the State		14,687.75		14,687.75
562 Tuition To Pennsylvania Charter Schools	24,419.04	197,003.32		221,422.36
568 Tuition To Private Residential Rehabilitative Institutions (PRRI) [In-State] and Detention Centers	6,347.60	7,157.94		13,505.54
580 Travel	669.71	2,534.96		3,204.67
599 Other Miscellaneous Purchased Services	270.25	548.69		818.94
Total Other Purchased Services	\$48,372.16	\$227,042.29		\$275,414.45

600 Supplies

610 General Supplies	97,794.00	81,265.45		179,059.45
630 Food	779.53	85.68		865.21
640 Books and Periodicals	78,967.92	21,557.90		100,525.82
650 Supplies & Fees – Technology Related	94.91	300.00		394.91
Total Supplies	\$177,636.36	\$103,209.03		\$280,845.39

700 Property

752 Capital Equipment – Original and Additional	4,716.10	7,376.50		12,092.60
Total Property	\$4,716.10	\$7,376.50		\$12,092.60

800 Other Objects

810 Dues and Fees	1,097.55	1,165.20		2,262.75
890 Miscellaneous Expenditures	2,304.23	7,390.77		9,695.00
Total Other Objects	\$3,401.78	\$8,555.97		\$11,957.75

Total 1100 Regular Programs – Elementary / Secondary

	\$5,241,527.78	\$4,128,164.50	\$440,440.48	\$9,810,132.76
--	-----------------------	-----------------------	---------------------	-----------------------

General Fund (10)

1110 Regular Programs

100 Personnel Services – Salaries

	<u>Elementary</u>	<u>Secondary</u>	<u>Federal</u>	<u>Total</u>
100 Personnel Services – Salaries	3,064,972.71	2,337,872.84		5,402,845.55
Total Personnel Services – Salaries	\$3,064,972.71	\$2,337,872.84		\$5,402,845.55

200 Personnel Services – Employee Benefits

210 Group Insurance – Contracted Provider	673,344.63	488,513.65	32.00	1,161,890.28
220 Social Security Contributions	236,384.77	173,886.62		410,271.39
230 PSERS Retirement Contributions	948,549.91	701,271.98		1,649,821.89
250 Unemployment Compensation	11,266.26	12,704.51		23,970.77
260 Workers' Compensation	45,352.65	51,142.35		96,495.00
Total Personnel Services – Employee Benefits	\$1,914,898.22	\$1,427,519.11	\$32.00	\$3,342,449.33

300 Purchased Professional and Technical Services

322 Professional Educational Services – lus	115.89	130.68		246.57
324 Professional Educational Services – Employee Training and Development Services	2,157.60	1,695.40		3,853.00
Total Purchased Professional and Technical Services	\$2,273.49	\$1,826.08		\$4,099.57

400 Purchased Property Services

430 Repairs and Maintenance Services	1,956.79	2,956.88		4,913.67
440 Rentals	23,300.17	11,805.80		35,105.97
Total Purchased Property Services	\$25,256.96	\$14,762.68		\$40,019.64

500 Other Purchased Services

510 Student Transportation Services	16,475.97	5,106.60		21,582.57
530 Communications	1.49	3.03		4.52
550 Printing and Binding	188.10			188.10
561 Tuition To Other School Districts Within the State		14,687.75		14,687.75
562 Tuition To Pennsylvania Charter Schools	24,419.04	197,003.32		221,422.36
568 Tuition To Private Residential Rehabilitative Institutions (PRRI) [In-State] and Detention Centers	6,347.60	7,157.94		13,505.54
580 Travel	669.71	2,534.96		3,204.67
599 Other Miscellaneous Purchased Services	270.25	548.69		818.94
Total Other Purchased Services	\$48,372.16	\$227,042.29		\$275,414.45

600 Supplies

610 General Supplies	97,794.00	81,265.45		179,059.45
630 Food	779.53	85.68		865.21
640 Books and Periodicals	78,967.92	21,557.90		100,525.82
650 Supplies & Fees – Technology Related	94.91	300.00		394.91
Total Supplies	\$177,636.36	\$103,209.03		\$280,845.39

700 Property

752 Capital Equipment – Original and Additional	4,716.10	7,376.50		12,092.60
Total Property	\$4,716.10	\$7,376.50		\$12,092.60

800 Other Objects

810 Dues and Fees	1,097.55	1,165.20		2,262.75
890 Miscellaneous Expenditures	2,304.23	7,390.77		9,695.00
Total Other Objects	\$3,401.78	\$8,555.97		\$11,957.75

Total 1110 Regular Programs

Total 1110 Regular Programs	\$5,241,527.78	\$4,128,164.50	\$32.00	\$9,369,724.28
------------------------------------	-----------------------	-----------------------	----------------	-----------------------

General Fund (10)

1190 Federally-Funded Regular Programs

100 Personnel Services – Salaries

100 Personnel Services – Salaries

Total Personnel Services – Salaries

200 Personnel Services – Employee Benefits

210 Group Insurance – Contracted Provider

220 Social Security Contributions

230 PSERS Retirement Contributions

Total Personnel Services – Employee Benefits

Total 1190 Federally-Funded Regular Programs

Elementary

Secondary

Federal

Total

313,507.16 313,507.16

\$313,507.16 \$313,507.16

46,953.48 46,953.48

15,862.67 15,862.67

64,085.17 64,085.17

\$126,901.32 \$126,901.32

\$440,408.48 \$440,408.48

LEA : 116191203 Bloomsburg Area SD

Printed 2/1/2018 9:44:25 AM

Page - 6 of 23

General Fund (10)

1200 Special Programs – Elementary / Secondary	<u>Elementary</u>	<u>Secondary</u>	<u>Federal</u>	<u>Total</u>
100 <u>Personnel Services – Salaries</u>				
100 Personnel Services – Salaries	642,451.73	288,511.77	188,486.79	1,119,450.29
Total Personnel Services – Salaries	\$642,451.73	\$288,511.77	\$188,486.79	\$1,119,450.29
200 <u>Personnel Services – Employee Benefits</u>				
210 Group Insurance – Contracted Provider	129,811.10	55,248.30	54,953.58	240,012.98
220 Social Security Contributions	55,616.70	25,490.67	6,276.29	87,383.66
230 PSERS Retirement Contributions	210,977.30	86,409.95	37,483.50	334,870.75
Total Personnel Services – Employee Benefits	\$396,405.10	\$167,148.92	\$98,713.37	\$662,267.39
300 <u>Purchased Professional and Technical Services</u>				
322 Professional Educational Services – lus	22,980.68	178,077.66		201,058.34
324 Professional Educational Services – Employee Training and Development Services	660.38		529.95	1,190.33
330 Other Professional Services	641.04	661.96	47,446.25	48,749.25
Total Purchased Professional and Technical Services	\$24,282.10	\$178,739.62	\$47,976.20	\$250,997.92
400 <u>Purchased Property Services</u>				
430 Repairs and Maintenance Services		435.39		435.39
Total Purchased Property Services		\$435.39		\$435.39
500 <u>Other Purchased Services</u>				
510 Student Transportation Services	939.54			939.54
561 Tuition To Other School Districts Within the State	133,276.16	30,630.03		163,906.19
562 Tuition To Pennsylvania Charter Schools	18,068.31	77,231.14		95,299.45
567 Tuition To Approved Private Schools (APS) and PA Chartered Schools for the Deaf and Blind	4,615.16	5,204.32		9,819.48
568 Tuition To Private Residential Rehabilitative Institutions (PRRI) [In-State] and Detention Centers		34,456.81		34,456.81
569 Tuition – Other	141,801.00	208,721.53		350,522.53
580 Travel	1,493.69	89.34	803.73	2,386.76
Total Other Purchased Services	\$300,193.86	\$356,333.17	\$803.73	\$657,330.76
600 <u>Supplies</u>				
610 General Supplies	7,853.33	3,649.77	913.73	12,416.83
640 Books and Periodicals	764.13	577.76		1,341.89
Total Supplies	\$8,617.46	\$4,227.53	\$913.73	\$13,758.72
800 <u>Other Objects</u>				
810 Dues and Fees	11.55	23.45	599.00	634.00
Total Other Objects	\$11.55	\$23.45	\$599.00	\$634.00
Total 1200 Special Programs – Elementary / Secondary	\$1,371,961.80	\$995,419.85	\$337,492.82	\$2,704,874.47

General Fund (10)

1210 Life Skills Support

	<u>Elementary</u>	<u>Secondary</u>	<u>Federal</u>	<u>Total</u>
100 Personnel Services – Salaries				
100 Personnel Services – Salaries	78,578.19	57,214.98	54,926.69	190,719.86
Total Personnel Services – Salaries	\$78,578.19	\$57,214.98	\$54,926.69	\$190,719.86
200 Personnel Services – Employee Benefits				
210 Group Insurance – Contracted Provider	9,664.65	13,038.12	9,427.45	32,130.22
220 Social Security Contributions	7,227.59	5,069.39	2,069.24	14,366.22
230 PSERS Retirement Contributions	21,659.71	15,808.88	19,804.61	57,273.20
Total Personnel Services – Employee Benefits	\$38,551.95	\$33,916.39	\$31,301.30	\$103,769.64
300 Purchased Professional and Technical Services				
322 Professional Educational Services – Ius		2,480.00		2,480.00
Total Purchased Professional and Technical Services		\$2,480.00		\$2,480.00
500 Other Purchased Services				
510 Student Transportation Services	939.54			939.54
Total Other Purchased Services	\$939.54			\$939.54
600 Supplies				
610 General Supplies	1,355.95	2,864.01		4,219.96
640 Books and Periodicals	29.36	59.60		88.96
Total Supplies	\$1,385.31	\$2,923.61		\$4,308.92
Total 1210 Life Skills Support	\$119,454.99	\$96,534.98	\$86,227.99	\$302,217.96

General Fund (10)

1220 Sensory Support

	<u>Elementary</u>	<u>Secondary</u>	<u>Federal</u>	<u>Total</u>
100 Personnel Services – Salaries				
100 Personnel Services – Salaries	63,027.10	9,972.21	30,316.69	103,316.00
Total Personnel Services – Salaries	\$63,027.10	\$9,972.21	\$30,316.69	\$103,316.00
200 Personnel Services – Employee Benefits				
210 Group Insurance – Contracted Provider	11,192.87	1,553.40	5,331.53	18,077.80
220 Social Security Contributions	6,267.41	376.75	1,142.44	7,786.60
230 PSERS Retirement Contributions	22,855.40	3,618.12	4,552.01	31,025.53
Total Personnel Services – Employee Benefits	\$40,315.68	\$5,548.27	\$11,025.98	\$56,889.93
300 Purchased Professional and Technical Services				
322 Professional Educational Services – Ius	4,842.00	11,654.35		16,496.35
324 Professional Educational Services – Employee Training and Development Services			319.00	319.00
330 Other Professional Services	641.04	661.96	585.00	1,888.00
Total Purchased Professional and Technical Services	\$5,483.04	\$12,316.31	\$904.00	\$18,703.35
400 Purchased Property Services				
430 Repairs and Maintenance Services		435.39		435.39
Total Purchased Property Services		\$435.39		\$435.39
500 Other Purchased Services				
580 Travel	253.78	89.34	25.60	368.72
Total Other Purchased Services	\$253.78	\$89.34	\$25.60	\$368.72
600 Supplies				
610 General Supplies	316.94		575.15	892.09
Total Supplies	\$316.94		\$575.15	\$892.09
800 Other Objects				
810 Dues and Fees			599.00	599.00
Total Other Objects			\$599.00	\$599.00
Total 1220 Sensory Support	\$109,396.54	\$28,361.52	\$43,446.42	\$181,204.48

General Fund (10)

1230 Emotional Support

	<u>Elementary</u>	<u>Secondary</u>	<u>Federal</u>	<u>Total</u>
100 Personnel Services – Salaries				
100 Personnel Services – Salaries	87,889.96		59,139.88	147,029.84
Total Personnel Services – Salaries	\$87,889.96		\$59,139.88	\$147,029.84
200 Personnel Services – Employee Benefits				
210 Group Insurance – Contracted Provider	18,113.91		18,680.02	36,793.93
220 Social Security Contributions	9,495.57		1,612.47	11,108.04
230 PSERS Retirement Contributions	37,713.15		6,439.84	44,152.99
Total Personnel Services – Employee Benefits	\$65,322.63		\$26,732.33	\$92,054.96
300 Purchased Professional and Technical Services				
322 Professional Educational Services – Ius	8,264.70	153,796.95		162,061.65
324 Professional Educational Services – Employee Training and Development Services	250.00		175.00	425.00
Total Purchased Professional and Technical Services	\$8,514.70	\$153,796.95	\$175.00	\$162,486.65
500 Other Purchased Services				
561 Tuition To Other School Districts Within the State	131,566.16	30,630.03		162,196.19
568 Tuition To Private Residential Rehabilitative Institutions (PRRI) [In-State] and Detention Centers		34,456.81		34,456.81
569 Tuition – Other	141,801.00	208,721.53		350,522.53
580 Travel	949.72		778.13	1,727.85
Total Other Purchased Services	\$274,316.88	\$273,808.37	\$778.13	\$548,903.38
600 Supplies				
610 General Supplies	616.98	359.02	73.57	1,049.57
640 Books and Periodicals	340.80			340.80
Total Supplies	\$957.78	\$359.02	\$73.57	\$1,390.37
800 Other Objects				
810 Dues and Fees	11.55	23.45		35.00
Total Other Objects	\$11.55	\$23.45		\$35.00
Total 1230 Emotional Support	\$437,013.50	\$427,987.79	\$86,898.91	\$951,900.20

General Fund (10)

1240 Academic Support

	<u>Elementary</u>	<u>Secondary</u>	<u>Federal</u>	<u>Total</u>
100 Personnel Services – Salaries				
100 Personnel Services – Salaries	412,956.48	221,324.58	44,103.53	678,384.59
Total Personnel Services – Salaries	\$412,956.48	\$221,324.58	\$44,103.53	\$678,384.59
200 Personnel Services – Employee Benefits				
210 Group Insurance – Contracted Provider	90,839.67	40,656.78	21,514.58	153,011.03
220 Social Security Contributions	32,626.13	20,044.53	1,452.14	54,122.80
230 PSERS Retirement Contributions	128,749.04	66,982.95	6,687.04	202,419.03
Total Personnel Services – Employee Benefits	\$252,214.84	\$127,684.26	\$29,653.76	\$409,552.86
300 Purchased Professional and Technical Services				
322 Professional Educational Services – Ius		2,400.70		2,400.70
324 Professional Educational Services – Employee Training and Development Services	410.38		35.95	446.33
Total Purchased Professional and Technical Services	\$410.38	\$2,400.70	\$35.95	\$2,847.03
500 Other Purchased Services				
561 Tuition To Other School Districts Within the State	1,710.00			1,710.00
562 Tuition To Pennsylvania Charter Schools	18,068.31	77,231.14		95,299.45
580 Travel	290.19			290.19
Total Other Purchased Services	\$20,068.50	\$77,231.14		\$97,299.64
600 Supplies				
610 General Supplies	5,062.12	426.74	265.01	5,753.87
640 Books and Periodicals	393.97	518.16		912.13
Total Supplies	\$5,456.09	\$944.90	\$265.01	\$6,666.00
Total 1240 Academic Support	\$691,106.29	\$429,585.58	\$74,058.25	\$1,194,750.12

General Fund (10)

	<u>Elementary</u>	<u>Secondary</u>	<u>Federal</u>	<u>Total</u>
1241 Learning Support – Public				
100 Personnel Services – Salaries				
100 Personnel Services – Salaries	395,445.03	186,039.03	44,103.53	625,587.59
Total Personnel Services – Salaries	\$395,445.03	\$186,039.03	\$44,103.53	\$625,587.59
200 Personnel Services – Employee Benefits				
210 Group Insurance – Contracted Provider	86,988.76	32,931.43	21,514.58	141,434.77
220 Social Security Contributions	31,310.43	17,393.40	1,452.14	50,155.97
230 PSERS Retirement Contributions	123,490.36	56,386.73	6,687.04	186,564.13
Total Personnel Services – Employee Benefits	\$241,789.55	\$106,711.56	\$29,653.76	\$378,154.87
300 Purchased Professional and Technical Services				
322 Professional Educational Services – Ius		2,400.70		2,400.70
324 Professional Educational Services – Employee Training and Development Services	410.38		35.95	446.33
Total Purchased Professional and Technical Services	\$410.38	\$2,400.70	\$35.95	\$2,847.03
500 Other Purchased Services				
561 Tuition To Other School Districts Within the State	1,710.00			1,710.00
562 Tuition To Pennsylvania Charter Schools	18,068.31	77,231.14		95,299.45
580 Travel	290.19			290.19
Total Other Purchased Services	\$20,068.50	\$77,231.14		\$97,299.64
600 Supplies				
610 General Supplies	4,815.36	426.74	265.01	5,507.11
640 Books and Periodicals	393.97	518.16		912.13
Total Supplies	\$5,209.33	\$944.90	\$265.01	\$6,419.24
Total 1241 Learning Support – Public	\$662,922.79	\$373,327.33	\$74,058.25	\$1,110,308.37

General Fund (10)

1243 Gifted Support

100 Personnel Services – Salaries

	<u>Elementary</u>	<u>Secondary</u>	<u>Federal</u>	<u>Total</u>
100 Personnel Services – Salaries	17,511.45	35,285.55		52,797.00
Total Personnel Services – Salaries	\$17,511.45	\$35,285.55		\$52,797.00

200 Personnel Services – Employee Benefits

210 Group Insurance – Contracted Provider	3,850.91	7,725.35		11,576.26
220 Social Security Contributions	1,315.70	2,651.13		3,966.83
230 PSERS Retirement Contributions	5,258.68	10,596.22		15,854.90
Total Personnel Services – Employee Benefits	\$10,425.29	\$20,972.70		\$31,397.99

600 Supplies

610 General Supplies	246.76			246.76
Total Supplies	\$246.76			\$246.76
Total 1243 Gifted Support	\$28,183.50	\$56,258.25		\$84,441.75

General Fund (10)

1260 Physical Support

300 Purchased Professional and Technical Services

	<u>Elementary</u>	<u>Secondary</u>	<u>Federal</u>	<u>Total</u>
330 Other Professional Services			46,861.25	46,861.25
Total Purchased Professional and Technical Services			\$46,861.25	\$46,861.25

600 Supplies

610 General Supplies	501.34			501.34
Total Supplies	\$501.34			\$501.34

Total 1260 Physical Support	\$501.34		\$46,861.25	\$47,362.59
------------------------------------	-----------------	--	--------------------	--------------------

General Fund (10)

1280 Early Intervention Support

300 Purchased Professional and Technical Services

322 Professional Educational Services – lus

Total Purchased Professional and Technical Services

Total 1280 Early Intervention Support

	<u>Elementary</u>	<u>Secondary</u>	<u>Federal</u>	<u>Total</u>
	9,873.98			9,873.98
	\$9,873.98			\$9,873.98
	\$9,873.98			\$9,873.98

General Fund (10)

1290 Special Programs - Other Support

300 Purchased Professional and Technical Services

322 Professional Educational Services – lus

Total Purchased Professional and Technical Services

500 Other Purchased Services

567 Tuition To Approved Private Schools (APS) and PA Chartered Schools for the Deaf and Blind

Total Other Purchased Services

Total 1290 Special Programs - Other Support

	<u>Elementary</u>	<u>Secondary</u>	<u>Federal</u>	<u>Total</u>
		7,745.66		7,745.66
		\$7,745.66		\$7,745.66
	4,615.16	5,204.32		9,819.48
	\$4,615.16	\$5,204.32		\$9,819.48
	\$4,615.16	\$12,949.98		\$17,565.14

General Fund (10)

1300 Vocational Education

	<u>Elementary</u>	<u>Secondary</u>	<u>Federal</u>	<u>Total</u>
100 Personnel Services – Salaries				
100 Personnel Services – Salaries		269,540.00		269,540.00
Total Personnel Services – Salaries		\$269,540.00		\$269,540.00
200 Personnel Services – Employee Benefits				
210 Group Insurance – Contracted Provider		51,099.56		51,099.56
220 Social Security Contributions		20,303.50		20,303.50
230 PSERS Retirement Contributions		80,402.26		80,402.26
Total Personnel Services – Employee Benefits		\$151,805.32		\$151,805.32
500 Other Purchased Services				
564 Tuition To Career and Technology Centers		820,272.00		820,272.00
580 Travel		1,457.94		1,457.94
Total Other Purchased Services		\$821,729.94		\$821,729.94
600 Supplies				
610 General Supplies		12,953.67		12,953.67
640 Books and Periodicals		704.00		704.00
650 Supplies & Fees – Technology Related		442.16		442.16
Total Supplies		\$14,099.83		\$14,099.83
700 Property				
752 Capital Equipment – Original and Additional		3,249.00		3,249.00
Total Property		\$3,249.00		\$3,249.00
800 Other Objects				
810 Dues and Fees		100.00		100.00
Total Other Objects		\$100.00		\$100.00
Total 1300 Vocational Education		\$1,260,524.09		\$1,260,524.09

General Fund (10)

	<u>Elementary</u>	<u>Secondary</u>	<u>Federal</u>	<u>Total</u>
1400 Other Instructional Programs – Elementary / Secondary				
100 Personnel Services – Salaries				
100 Personnel Services – Salaries	1,440.44	56,127.98	1,500.00	59,068.42
Total Personnel Services – Salaries	\$1,440.44	\$56,127.98	\$1,500.00	\$59,068.42
200 Personnel Services – Employee Benefits				
210 Group Insurance – Contracted Provider		10,974.46		10,974.46
220 Social Security Contributions	111.67	4,225.17	113.75	4,450.59
230 PSERS Retirement Contributions	432.56	16,741.92	450.45	17,624.93
Total Personnel Services – Employee Benefits	\$544.23	\$31,941.55	\$564.20	\$33,049.98
300 Purchased Professional and Technical Services				
322 Professional Educational Services – lus	85.80	34,788.82		34,874.62
Total Purchased Professional and Technical Services	\$85.80	\$34,788.82		\$34,874.62
500 Other Purchased Services				
561 Tuition To Other School Districts Within the State		37,542.75		37,542.75
568 Tuition To Private Residential Rehabilitative Institutions (PRRI) [In-State] and Detention Centers		2,880.00		2,880.00
569 Tuition – Other	280.00	560.00		840.00
Total Other Purchased Services	\$280.00	\$40,982.75		\$41,262.75
600 Supplies				
610 General Supplies	194.70	3,850.30		4,045.00
620 Energy		480.28		480.28
Total Supplies	\$194.70	\$4,330.58		\$4,525.28
Total 1400 Other Instructional Programs – Elementary / Secondary	\$2,545.17	\$168,171.68	\$2,064.20	\$172,781.05

General Fund (10)

1410 Drivers' Education

100 Personnel Services – Salaries

	<u>Elementary</u>	<u>Secondary</u>	<u>Federal</u>	<u>Total</u>
100 Personnel Services – Salaries		55,936.36		55,936.36

Total Personnel Services – Salaries		\$55,936.36		\$55,936.36
--	--	--------------------	--	--------------------

200 Personnel Services – Employee Benefits

210 Group Insurance – Contracted Provider		10,974.46		10,974.46
---	--	-----------	--	-----------

220 Social Security Contributions		4,210.50		4,210.50
-----------------------------------	--	----------	--	----------

230 PSERS Retirement Contributions		16,684.37		16,684.37
------------------------------------	--	-----------	--	-----------

Total Personnel Services – Employee Benefits		\$31,869.33		\$31,869.33
---	--	--------------------	--	--------------------

600 Supplies

620 Energy		480.28		480.28
------------	--	--------	--	--------

Total Supplies		\$480.28		\$480.28
-----------------------	--	-----------------	--	-----------------

Total 1410 Drivers' Education		\$88,285.97		\$88,285.97
--------------------------------------	--	--------------------	--	--------------------

General Fund (10)

1430 Homebound Instruction

100 Personnel Services – Salaries

	<u>Elementary</u>	<u>Secondary</u>	<u>Federal</u>	<u>Total</u>
100 Personnel Services – Salaries	1,440.44	191.62		1,632.06
Total Personnel Services – Salaries	\$1,440.44	\$191.62		\$1,632.06

200 Personnel Services – Employee Benefits

220 Social Security Contributions	111.67	14.67		126.34
230 PSERS Retirement Contributions	432.56	57.55		490.11

Total Personnel Services – Employee Benefits	\$544.23	\$72.22		\$616.45
Total 1430 Homebound Instruction	\$1,984.67	\$263.84		\$2,248.51

General Fund (10)

	<u>Elementary</u>	<u>Secondary</u>	<u>Federal</u>	<u>Total</u>
1440 Alternative Regular Education Programs				
100 Personnel Services – Salaries				
100 Personnel Services – Salaries			1,500.00	1,500.00
Total Personnel Services – Salaries			\$1,500.00	\$1,500.00
200 Personnel Services – Employee Benefits				
220 Social Security Contributions			113.75	113.75
230 PSERS Retirement Contributions			450.45	450.45
Total Personnel Services – Employee Benefits			\$564.20	\$564.20
300 Purchased Professional and Technical Services				
322 Professional Educational Services – Ius	85.80	34,788.82		34,874.62
Total Purchased Professional and Technical Services	\$85.80	\$34,788.82		\$34,874.62
500 Other Purchased Services				
561 Tuition To Other School Districts Within the State		37,542.75		37,542.75
568 Tuition To Private Residential Rehabilitative Institutions (PRRI) [In-State] and Detention Centers		2,880.00		2,880.00
569 Tuition – Other	280.00	560.00		840.00
Total Other Purchased Services	\$280.00	\$40,982.75		\$41,262.75
600 Supplies				
610 General Supplies	194.70	3,850.30		4,045.00
Total Supplies	\$194.70	\$3,850.30		\$4,045.00
Total 1440 Alternative Regular Education Programs	\$560.50	\$79,621.87	\$2,064.20	\$82,246.57

General Fund (10)

1441 Adjudicated / Court-Placed Programs

Elementary

Secondary

Federal

Total

300 Purchased Professional and Technical Services

322 Professional Educational Services – Ius

32,064.38

32,064.38

Total Purchased Professional and Technical Services

\$32,064.38

\$32,064.38

500 Other Purchased Services

561 Tuition To Other School Districts Within the State

432.57

432.57

Total Other Purchased Services

\$432.57

\$432.57

Total 1441 Adjudicated / Court-Placed Programs

\$32,496.95

\$32,496.95

General Fund (10)

	<u>Elementary</u>	<u>Secondary</u>	<u>Federal</u>	<u>Total</u>
1442 Alternative Education Programs				
100 Personnel Services – Salaries				
100 Personnel Services – Salaries			1,500.00	1,500.00
Total Personnel Services – Salaries			\$1,500.00	\$1,500.00
200 Personnel Services – Employee Benefits				
220 Social Security Contributions			113.75	113.75
230 PSERS Retirement Contributions			450.45	450.45
Total Personnel Services – Employee Benefits			\$564.20	\$564.20
300 Purchased Professional and Technical Services				
322 Professional Educational Services – Ius	85.80	2,724.44		2,810.24
Total Purchased Professional and Technical Services	\$85.80	\$2,724.44		\$2,810.24
500 Other Purchased Services				
561 Tuition To Other School Districts Within the State		37,110.18		37,110.18
568 Tuition To Private Residential Rehabilitative Institutions (PRRI) [In-State] and Detention Centers		2,880.00		2,880.00
569 Tuition – Other	280.00	560.00		840.00
Total Other Purchased Services	\$280.00	\$40,550.18		\$40,830.18
600 Supplies				
610 General Supplies	194.70	3,850.30		4,045.00
Total Supplies	\$194.70	\$3,850.30		\$4,045.00
Total 1442 Alternative Education Programs	\$560.50	\$47,124.92	\$2,064.20	\$49,749.62

General Fund (10)

1500 Nonpublic School Programs

300 Purchased Professional and Technical Services

322 Professional Educational Services – lus

Total Purchased Professional and Technical Services

Total 1500 Nonpublic School Programs

Elementary

Secondary

Federal

Total

2,492.52

2,492.52

\$2,492.52

\$2,492.52

\$2,492.52

\$2,492.52

General Fund (10)

2000 Support Services

Total

100 Personnel Services – Salaries

100 Personnel Services – Salaries 2,554,846.85

Total Personnel Services – Salaries \$2,554,846.85

200 Personnel Services – Employee Benefits

210 Group Insurance – Contracted Provider 704,977.87

220 Social Security Contributions 189,671.95

230 PSERS Retirement Contributions 744,192.39

240 Tuition Reimbursement 122,765.00

Total Personnel Services – Employee Benefits \$1,761,607.21

300 Purchased Professional and Technical Services

324 Professional Educational Services – Employee Training and Development Services 7,811.50

330 Other Professional Services 148,318.60

Total Purchased Professional and Technical Services \$156,130.10

400 Purchased Property Services

410 Cleaning Services 27,268.33

420 Utility Services 73,285.88

430 Repairs and Maintenance Services 176,513.76

440 Rentals 27,934.38

450 Construction Services 143,252.06

460 Extermination Services 6,275.00

490 Other Purchased Property Services 1,189.00

Total Purchased Property Services \$455,718.41

500 Other Purchased Services

513 Contracted Carriers 877,734.65

516 Student Transportation Services From the IU 3,119.03

520 Insurance – General 278.75

523 General Property and Liability Insurance 101,119.00

530 Communications 97,820.59

549 Other Advertising/Public Relations 12,243.50

550 Printing and Binding 7,476.55

580 Travel 17,532.28

Total Other Purchased Services \$1,117,324.35

600 Supplies

610 General Supplies 619,753.69

620 Energy 392,111.13

630 Food 3,687.26

640 Books and Periodicals 19,749.82

650 Supplies & Fees – Technology Related 4,345.00

Total Supplies \$1,039,646.90

700 Property

752 Capital Equipment – Original and Additional 282,548.43

Total Property \$282,548.43

LEA : 116191203 Bloomsburg Area SD

Printed 2/1/2018 9:44:27 AM

General Fund (10)

2000 Support Services

800 Other Objects

810 Dues and Fees

22,326.09

820 Claims and Judgments Against the LEA

5,028.13

890 Miscellaneous Expenditures

1,470.00

Total Other Objects

\$28,824.22

Total 2000 Support Services

\$7,396,646.47

General Fund (10)

2100 Support Services – Students

100 Personnel Services – Salaries

	<u>Elementary</u>	<u>Secondary</u>	<u>Federal</u>	<u>Total</u>
100 Personnel Services – Salaries	147,294.23	181,093.59		328,387.82
Total Personnel Services – Salaries	\$147,294.23	\$181,093.59		\$328,387.82

200 Personnel Services – Employee Benefits

210 Group Insurance – Contracted Provider	17,143.96	37,222.06		54,366.02
220 Social Security Contributions	11,103.15	13,625.57		24,728.72
230 PSERS Retirement Contributions	44,125.61	54,368.55		98,494.16
Total Personnel Services – Employee Benefits	\$72,372.72	\$105,216.18		\$177,588.90

300 Purchased Professional and Technical Services

324 Professional Educational Services – Employee Training and Development Services	805.00			805.00
330 Other Professional Services	8,773.38	17,812.62		26,586.00
Total Purchased Professional and Technical Services	\$9,578.38	\$17,812.62		\$27,391.00

400 Purchased Property Services

440 Rentals	118.59	575.19		693.78
Total Purchased Property Services	\$118.59	\$575.19		\$693.78

500 Other Purchased Services

530 Communications		98.00		98.00
580 Travel	345.14	158.26		503.40
Total Other Purchased Services	\$345.14	\$256.26		\$601.40

600 Supplies

610 General Supplies	8,220.03	1,716.62		9,936.65
630 Food	83.04			83.04
640 Books and Periodicals	109.85			109.85
Total Supplies	\$8,412.92	\$1,716.62		\$10,129.54

800 Other Objects

810 Dues and Fees	522.29	162.71		685.00
890 Miscellaneous Expenditures		1,470.00		1,470.00
Total Other Objects	\$522.29	\$1,632.71		\$2,155.00

Total 2100 Support Services – Students

Total 2100 Support Services – Students	\$238,644.27	\$308,303.17		\$546,947.44
---	---------------------	---------------------	--	---------------------

General Fund (10)

	<u>Elementary</u>	<u>Secondary</u>	<u>Federal</u>	<u>Total</u>
2120 Guidance Services				
100 Personnel Services – Salaries				
100 Personnel Services – Salaries	125,936.02	157,008.80		282,944.82
Total Personnel Services – Salaries	\$125,936.02	\$157,008.80		\$282,944.82
200 Personnel Services – Employee Benefits				
210 Group Insurance – Contracted Provider	13,814.86	33,467.98		47,282.84
220 Social Security Contributions	9,488.89	11,805.24		21,294.13
230 PSERS Retirement Contributions	37,711.71	47,135.86		84,847.57
Total Personnel Services – Employee Benefits	\$61,015.46	\$92,409.08		\$153,424.54
300 Purchased Professional and Technical Services				
324 Professional Educational Services – Employee Training and Development Services	805.00			805.00
330 Other Professional Services	8,773.38	17,812.62		26,586.00
Total Purchased Professional and Technical Services	\$9,578.38	\$17,812.62		\$27,391.00
400 Purchased Property Services				
440 Rentals	118.59	575.19		693.78
Total Purchased Property Services	\$118.59	\$575.19		\$693.78
500 Other Purchased Services				
530 Communications		98.00		98.00
580 Travel	204.80			204.80
Total Other Purchased Services	\$204.80	\$98.00		\$302.80
600 Supplies				
610 General Supplies	7,529.52	937.97		8,467.49
630 Food	83.04			83.04
640 Books and Periodicals	109.85			109.85
Total Supplies	\$7,722.41	\$937.97		\$8,660.38
800 Other Objects				
810 Dues and Fees	378.00			378.00
890 Miscellaneous Expenditures		1,470.00		1,470.00
Total Other Objects	\$378.00	\$1,470.00		\$1,848.00
Total 2120 Guidance Services	\$204,953.66	\$270,311.66		\$475,265.32

General Fund (10)

	<u>Elementary</u>	<u>Secondary</u>	<u>Federal</u>	<u>Total</u>
2140 Psychological Services				
100 Personnel Services – Salaries				
100 Personnel Services – Salaries	21,358.21	24,084.79		45,443.00
Total Personnel Services – Salaries	\$21,358.21	\$24,084.79		\$45,443.00
200 Personnel Services – Employee Benefits				
210 Group Insurance – Contracted Provider	3,329.10	3,754.08		7,083.18
220 Social Security Contributions	1,614.26	1,820.33		3,434.59
230 PSERS Retirement Contributions	6,413.90	7,232.69		13,646.59
Total Personnel Services – Employee Benefits	\$11,357.26	\$12,807.10		\$24,164.36
500 Other Purchased Services				
580 Travel	140.34	158.26		298.60
Total Other Purchased Services	\$140.34	\$158.26		\$298.60
600 Supplies				
610 General Supplies	690.51	778.65		1,469.16
Total Supplies	\$690.51	\$778.65		\$1,469.16
800 Other Objects				
810 Dues and Fees	144.29	162.71		307.00
Total Other Objects	\$144.29	\$162.71		\$307.00
Total 2140 Psychological Services	\$33,690.61	\$37,991.51		\$71,682.12

General Fund (10)

2200 Support Services – Instructional Staff

	<u>Elementary</u>	<u>Secondary</u>	<u>Federal</u>	<u>Total</u>
100 Personnel Services – Salaries				
100 Personnel Services – Salaries	178,323.89	197,676.24		376,000.13
Total Personnel Services – Salaries	\$178,323.89	\$197,676.24		\$376,000.13
200 Personnel Services – Employee Benefits				
210 Group Insurance – Contracted Provider	41,650.86	40,297.04		81,947.90
220 Social Security Contributions	13,426.88	14,911.56		28,338.44
230 PSERS Retirement Contributions	53,422.77	59,218.11		112,640.88
240 Tuition Reimbursement	62,070.16	60,694.84		122,765.00
Total Personnel Services – Employee Benefits	\$170,570.67	\$175,121.55		\$345,692.22
300 Purchased Professional and Technical Services				
324 Professional Educational Services – Employee Training and Development Services	1,506.35	2,334.65		3,841.00
330 Other Professional Services	47.00	53.00	340.00	440.00
Total Purchased Professional and Technical Services	\$1,553.35	\$2,387.65	\$340.00	\$4,281.00
500 Other Purchased Services				
530 Communications	235.00	265.00		500.00
580 Travel	1,245.77	2,267.24		3,513.01
Total Other Purchased Services	\$1,480.77	\$2,532.24		\$4,013.01
600 Supplies				
610 General Supplies	5,877.14	13,469.34		19,346.48
630 Food	769.87	868.16		1,638.03
640 Books and Periodicals	8,141.72	7,063.11		15,204.83
Total Supplies	\$14,788.73	\$21,400.61		\$36,189.34
800 Other Objects				
810 Dues and Fees	106.22	393.78		500.00
Total Other Objects	\$106.22	\$393.78		\$500.00
Total 2200 Support Services – Instructional Staff	\$366,823.63	\$399,512.07	\$340.00	\$766,675.70

General Fund (10)

	<u>Elementary</u>	<u>Secondary</u>	<u>Federal</u>	<u>Total</u>
2250 School Library Services				
100 Personnel Services – Salaries				
100 Personnel Services – Salaries	94,655.15	103,326.38		197,981.53
Total Personnel Services – Salaries	\$94,655.15	\$103,326.38		\$197,981.53
200 Personnel Services – Employee Benefits				
210 Group Insurance – Contracted Provider	22,587.38	18,799.92		41,387.30
220 Social Security Contributions	7,106.34	7,784.15		14,890.49
230 PSERS Retirement Contributions	28,424.78	31,028.88		59,453.66
Total Personnel Services – Employee Benefits	\$58,118.50	\$57,612.95		\$115,731.45
300 Purchased Professional and Technical Services				
324 Professional Educational Services – Employee Training and Development Services		636.00		636.00
Total Purchased Professional and Technical Services		\$636.00		\$636.00
500 Other Purchased Services				
580 Travel	27.53	820.53		848.06
Total Other Purchased Services	\$27.53	\$820.53		\$848.06
600 Supplies				
610 General Supplies	4,857.96	12,320.06		17,178.02
640 Books and Periodicals	8,141.72	7,063.11		15,204.83
Total Supplies	\$12,999.68	\$19,383.17		\$32,382.85
800 Other Objects				
810 Dues and Fees		274.00		274.00
Total Other Objects		\$274.00		\$274.00
Total 2250 School Library Services	\$165,800.86	\$182,053.03		\$347,853.89

General Fund (10)

2260 Instruction and Curriculum Development Services

	<u>Elementary</u>	<u>Secondary</u>	<u>Federal</u>	<u>Total</u>
100 Personnel Services – Salaries				
100 Personnel Services – Salaries	83,668.74	94,349.86		178,018.60
Total Personnel Services – Salaries	\$83,668.74	\$94,349.86		\$178,018.60
200 Personnel Services – Employee Benefits				
210 Group Insurance – Contracted Provider	19,063.48	21,497.12		40,560.60
220 Social Security Contributions	6,320.54	7,127.41		13,447.95
230 PSERS Retirement Contributions	24,997.99	28,189.23		53,187.22
Total Personnel Services – Employee Benefits	\$50,382.01	\$56,813.76		\$107,195.77
300 Purchased Professional and Technical Services				
324 Professional Educational Services – Employee Training and Development Services	1,506.35	1,698.65		3,205.00
330 Other Professional Services	47.00	53.00	340.00	440.00
Total Purchased Professional and Technical Services	\$1,553.35	\$1,751.65	\$340.00	\$3,645.00
500 Other Purchased Services				
530 Communications	235.00	265.00		500.00
580 Travel	1,218.24	1,446.71		2,664.95
Total Other Purchased Services	\$1,453.24	\$1,711.71		\$3,164.95
600 Supplies				
610 General Supplies	1,019.18	1,149.28		2,168.46
630 Food	769.87	868.16		1,638.03
Total Supplies	\$1,789.05	\$2,017.44		\$3,806.49
800 Other Objects				
810 Dues and Fees	106.22	119.78		226.00
Total Other Objects	\$106.22	\$119.78		\$226.00
Total 2260 Instruction and Curriculum Development Services	\$138,952.61	\$156,764.20	\$340.00	\$296,056.81

General Fund (10)

	<u>Elementary</u>	<u>Secondary</u>	<u>Federal</u>	<u>Total</u>
2270 Instructional Staff Professional Development Services				
200 Personnel Services – Employee Benefits				
240 Tuition Reimbursement	62,070.16	60,694.84		122,765.00
Total Personnel Services – Employee Benefits	\$62,070.16	\$60,694.84		\$122,765.00
Total 2270 Instructional Staff Professional Development Services	\$62,070.16	\$60,694.84		\$122,765.00

General Fund (10)

	<u>Elementary</u>	<u>Secondary</u>	<u>Federal</u>	<u>Total</u>
2300 Support Services – Administration				
100 Personnel Services – Salaries				
100 Personnel Services – Salaries	289,292.19	258,130.76		740,317.44
Total Personnel Services – Salaries	\$289,292.19	\$258,130.76		\$740,317.44
200 Personnel Services – Employee Benefits				
210 Group Insurance – Contracted Provider	90,888.52	78,095.80		190,476.91
220 Social Security Contributions	21,524.04	19,332.77		55,275.26
230 PSERS Retirement Contributions	86,805.61	77,349.70		209,410.80
Total Personnel Services – Employee Benefits	\$199,218.17	\$174,778.27		\$455,162.97
300 Purchased Professional and Technical Services				
324 Professional Educational Services – Employee Training and Development Services	476.50	132.50		1,363.00
330 Other Professional Services				94,211.80
Total Purchased Professional and Technical Services	\$476.50	\$132.50		\$95,574.80
400 Purchased Property Services				
440 Rentals	2,107.76	5,289.49		10,161.52
Total Purchased Property Services	\$2,107.76	\$5,289.49		\$10,161.52
500 Other Purchased Services				
520 Insurance – General				278.75
530 Communications	7,676.77	10,532.02		21,404.73
549 Other Advertising/Public Relations				12,243.50
550 Printing and Binding	1,315.33	2,350.57		7,189.55
580 Travel	323.63	3,388.83		9,943.65
Total Other Purchased Services	\$9,315.73	\$16,271.42		\$51,060.18
600 Supplies				
610 General Supplies	8,151.79	3,344.74		27,199.56
630 Food				1,685.19
640 Books and Periodicals	1,566.52	387.14		4,435.14
650 Supplies & Fees – Technology Related	346.00			346.00
Total Supplies	\$10,064.31	\$3,731.88		\$33,665.89
700 Property				
752 Capital Equipment – Original and Additional				1,935.00
Total Property				\$1,935.00
800 Other Objects				
810 Dues and Fees	1,549.60	1,917.40		15,865.52
820 Claims and Judgments Against the LEA				3,000.00
Total Other Objects	\$1,549.60	\$1,917.40		\$18,865.52
Total 2300 Support Services – Administration	\$512,024.26	\$460,251.72		\$1,406,743.32

General Fund (10)

2310 Board Services

Elementary

Secondary

Federal

Total

300 Purchased Professional and Technical Services

330 Other Professional Services

25,491.00

Total Purchased Professional and Technical Services

\$25,491.00

500 Other Purchased Services

520 Insurance – General

278.75

549 Other Advertising/Public Relations

12,243.50

Total Other Purchased Services

\$12,522.25

600 Supplies

610 General Supplies

68.45

630 Food

1,654.39

Total Supplies

\$1,722.84

800 Other Objects

810 Dues and Fees

10,314.19

820 Claims and Judgments Against the LEA

3,000.00

Total Other Objects

\$13,314.19

Total 2310 Board Services

\$53,050.28

General Fund (10)

	<u>Elementary</u>	<u>Secondary</u>	<u>Federal</u>	<u>Total</u>
2330 Tax Assessment and Collection Services				
100 Personnel Services – Salaries				
100 Personnel Services – Salaries				28,382.00
Total Personnel Services – Salaries				\$28,382.00
200 Personnel Services – Employee Benefits				
220 Social Security Contributions				2,171.33
Total Personnel Services – Employee Benefits				\$2,171.33
300 Purchased Professional and Technical Services				
330 Other Professional Services				49,114.91
Total Purchased Professional and Technical Services				\$49,114.91
500 Other Purchased Services				
530 Communications				3,195.94
550 Printing and Binding				1,646.15
Total Other Purchased Services				\$4,842.09
600 Supplies				
610 General Supplies				7,365.05
Total Supplies				\$7,365.05
Total 2330 Tax Assessment and Collection Services				\$91,875.38

General Fund (10)

	<u>Elementary</u>	<u>Secondary</u>	<u>Federal</u>	<u>Total</u>
2350 Legal and Accounting Services				
300 <u>Purchased Professional and Technical Services</u>				
330 Other Professional Services				19,605.89
Total Purchased Professional and Technical Services				\$19,605.89
800 <u>Other Objects</u>				
810 Dues and Fees				277.33
Total Other Objects				\$277.33
Total 2350 Legal and Accounting Services				\$19,883.22

General Fund (10)

	<u>Elementary</u>	<u>Secondary</u>	<u>Federal</u>	<u>Total</u>
2360 Office of the Superintendent / Executive Director Services				
100 Personnel Services – Salaries				
100 Personnel Services – Salaries				164,512.49
Total Personnel Services – Salaries				\$164,512.49
200 Personnel Services – Employee Benefits				
210 Group Insurance – Contracted Provider				21,492.59
220 Social Security Contributions				12,247.12
230 PSERS Retirement Contributions				45,255.49
Total Personnel Services – Employee Benefits				\$78,995.20
300 Purchased Professional and Technical Services				
324 Professional Educational Services – Employee Training and Development Services				754.00
Total Purchased Professional and Technical Services				\$754.00
400 Purchased Property Services				
440 Rentals				2,764.27
Total Purchased Property Services				\$2,764.27
500 Other Purchased Services				
530 Communications	5,930.07	6,687.09		12,617.16
550 Printing and Binding				1,877.50
580 Travel				6,231.19
Total Other Purchased Services	\$5,930.07	\$6,687.09		\$20,725.85
600 Supplies				
610 General Supplies				8,269.53
630 Food				30.80
640 Books and Periodicals				2,481.48
Total Supplies				\$10,781.81
700 Property				
752 Capital Equipment – Original and Additional				1,935.00
Total Property				\$1,935.00
800 Other Objects				
810 Dues and Fees				1,807.00
Total Other Objects				\$1,807.00
Total 2360 Office of the Superintendent / Executive Director Services	\$5,930.07	\$6,687.09		\$282,275.62

General Fund (10)

	<u>Elementary</u>	<u>Secondary</u>	<u>Federal</u>	<u>Total</u>
2380 Office of the Principal Services				
100 Personnel Services – Salaries				
100 Personnel Services – Salaries	289,292.19	258,130.76		547,422.95
Total Personnel Services – Salaries	\$289,292.19	\$258,130.76		\$547,422.95
200 Personnel Services – Employee Benefits				
210 Group Insurance – Contracted Provider	90,888.52	78,095.80		168,984.32
220 Social Security Contributions	21,524.04	19,332.77		40,856.81
230 PSERS Retirement Contributions	86,805.61	77,349.70		164,155.31
Total Personnel Services – Employee Benefits	\$199,218.17	\$174,778.27		\$373,996.44
300 Purchased Professional and Technical Services				
324 Professional Educational Services – Employee Training and Development Services	476.50	132.50		609.00
Total Purchased Professional and Technical Services	\$476.50	\$132.50		\$609.00
400 Purchased Property Services				
440 Rentals	2,107.76	5,289.49		7,397.25
Total Purchased Property Services	\$2,107.76	\$5,289.49		\$7,397.25
500 Other Purchased Services				
530 Communications	1,746.70	3,844.93		5,591.63
550 Printing and Binding	1,315.33	2,350.57		3,665.90
580 Travel	323.63	3,388.83		3,712.46
Total Other Purchased Services	\$3,385.66	\$9,584.33		\$12,969.99
600 Supplies				
610 General Supplies	8,151.79	3,344.74		11,496.53
640 Books and Periodicals	1,566.52	387.14		1,953.66
650 Supplies & Fees – Technology Related	346.00			346.00
Total Supplies	\$10,064.31	\$3,731.88		\$13,796.19
800 Other Objects				
810 Dues and Fees	1,549.60	1,917.40		3,467.00
Total Other Objects	\$1,549.60	\$1,917.40		\$3,467.00
Total 2380 Office of the Principal Services	\$506,094.19	\$453,564.63		\$959,658.82

General Fund (10)

2400 Support Services – Pupil Health

Elementary

Secondary

Federal

Total

100 Personnel Services – Salaries

100 Personnel Services – Salaries

153,668.32

Total Personnel Services – Salaries

\$153,668.32

200 Personnel Services – Employee Benefits

210 Group Insurance – Contracted Provider

71,708.66

220 Social Security Contributions

11,277.68

230 PSERS Retirement Contributions

46,141.55

Total Personnel Services – Employee Benefits

\$129,127.89

400 Purchased Property Services

430 Repairs and Maintenance Services

555.00

Total Purchased Property Services

\$555.00

500 Other Purchased Services

580 Travel

382.00

Total Other Purchased Services

\$382.00

600 Supplies

610 General Supplies

7,996.08

630 Food

194.00

Total Supplies

\$8,190.08

Total 2400 Support Services – Pupil Health

\$291,923.29

General Fund (10)

2440 Nursing Services

Elementary

Secondary

Federal

Total

100 Personnel Services – Salaries

100 Personnel Services – Salaries

153,668.32

Total Personnel Services – Salaries

\$153,668.32

200 Personnel Services – Employee Benefits

210 Group Insurance – Contracted Provider

71,708.66

220 Social Security Contributions

11,277.68

230 PSERS Retirement Contributions

46,141.55

Total Personnel Services – Employee Benefits

\$129,127.89

400 Purchased Property Services

430 Repairs and Maintenance Services

555.00

Total Purchased Property Services

\$555.00

500 Other Purchased Services

580 Travel

382.00

Total Other Purchased Services

\$382.00

600 Supplies

610 General Supplies

7,996.08

630 Food

194.00

Total Supplies

\$8,190.08

Total 2440 Nursing Services

\$291,923.29

General Fund (10)

2500 Support Services – Business

Elementary Secondary Federal Total

100 Personnel Services – Salaries

100 Personnel Services – Salaries 244,605.38

Total Personnel Services – Salaries \$244,605.38

200 Personnel Services – Employee Benefits

210 Group Insurance – Contracted Provider 78,820.08

220 Social Security Contributions 17,493.60

230 PSERS Retirement Contributions 70,442.31

Total Personnel Services – Employee Benefits \$166,755.99

300 Purchased Professional and Technical Services

324 Professional Educational Services – Employee Training and Development Services 155.00

330 Other Professional Services 6,250.00

Total Purchased Professional and Technical Services \$6,405.00

400 Purchased Property Services

430 Repairs and Maintenance Services 40.41

Total Purchased Property Services \$40.41

500 Other Purchased Services

580 Travel 543.15

Total Other Purchased Services \$543.15

600 Supplies

610 General Supplies 20,482.47

Total Supplies \$20,482.47

800 Other Objects

810 Dues and Fees 1,895.57

820 Claims and Judgments Against the LEA 2,028.13

Total Other Objects \$3,923.70

Total 2500 Support Services – Business \$442,756.10

General Fund (10)

2510 Fiscal Services

Elementary Secondary Federal Total

100 Personnel Services – Salaries
100 Personnel Services – Salaries 244,605.38

Total Personnel Services – Salaries \$244,605.38

200 Personnel Services – Employee Benefits
210 Group Insurance – Contracted Provider 78,820.08
220 Social Security Contributions 17,493.60
230 PSERS Retirement Contributions 70,442.31

Total Personnel Services – Employee Benefits \$166,755.99

300 Purchased Professional and Technical Services
324 Professional Educational Services – Employee Training and Development Services 155.00
330 Other Professional Services 6,250.00

Total Purchased Professional and Technical Services \$6,405.00

400 Purchased Property Services
430 Repairs and Maintenance Services 40.41

Total Purchased Property Services \$40.41

500 Other Purchased Services
580 Travel 543.15

Total Other Purchased Services \$543.15

600 Supplies
610 General Supplies 20,482.47

Total Supplies \$20,482.47

800 Other Objects
810 Dues and Fees 1,895.57
820 Claims and Judgments Against the LEA 2,028.13

Total Other Objects \$3,923.70

Total 2510 Fiscal Services \$442,756.10

General Fund (10)

2511 Supervision of Fiscal Services - Head of Component

Elementary Secondary Federal Total

100 Personnel Services – Salaries				
100 Personnel Services – Salaries				116,207.41
Total Personnel Services – Salaries				\$116,207.41
200 Personnel Services – Employee Benefits				
210 Group Insurance – Contracted Provider				7,353.72
220 Social Security Contributions				8,261.24
230 PSERS Retirement Contributions				31,894.08
Total Personnel Services – Employee Benefits				\$47,509.04
300 Purchased Professional and Technical Services				
324 Professional Educational Services – Employee Training and Development Services				155.00
Total Purchased Professional and Technical Services				\$155.00
500 Other Purchased Services				
580 Travel				492.75
Total Other Purchased Services				\$492.75
600 Supplies				
610 General Supplies				415.35
Total Supplies				\$415.35
800 Other Objects				
810 Dues and Fees				421.07
Total Other Objects				\$421.07
Total 2511 Supervision of Fiscal Services - Head of Component				\$165,200.62

General Fund (10)

2514 Payroll Services

Elementary

Secondary

Federal

Total

100 Personnel Services – Salaries

100 Personnel Services – Salaries

26,348.48

Total Personnel Services – Salaries

\$26,348.48

200 Personnel Services – Employee Benefits

210 Group Insurance – Contracted Provider

18,557.16

220 Social Security Contributions

1,916.19

230 PSERS Retirement Contributions

7,912.50

Total Personnel Services – Employee Benefits

\$28,385.85

300 Purchased Professional and Technical Services

330 Other Professional Services

6,250.00

Total Purchased Professional and Technical Services

\$6,250.00

800 Other Objects

820 Claims and Judgments Against the LEA

2,028.13

Total Other Objects

\$2,028.13

Total 2514 Payroll Services

\$63,012.46

General Fund (10)

	<u>Elementary</u>	<u>Secondary</u>	<u>Federal</u>	<u>Total</u>
2515 Financial Accounting Services				
100 Personnel Services – Salaries				
100 Personnel Services – Salaries				102,049.49
Total Personnel Services – Salaries				\$102,049.49
200 Personnel Services – Employee Benefits				
210 Group Insurance – Contracted Provider				52,909.20
220 Social Security Contributions				7,316.17
230 PSERS Retirement Contributions				30,635.73
Total Personnel Services – Employee Benefits				\$90,861.10
400 Purchased Property Services				
430 Repairs and Maintenance Services				40.41
Total Purchased Property Services				\$40.41
500 Other Purchased Services				
580 Travel				50.40
Total Other Purchased Services				\$50.40
600 Supplies				
610 General Supplies				20,067.12
Total Supplies				\$20,067.12
800 Other Objects				
810 Dues and Fees				1,474.50
Total Other Objects				\$1,474.50
Total 2515 Financial Accounting Services				\$214,543.02

General Fund (10)

	<u>Elementary</u>	<u>Secondary</u>	<u>Federal</u>	<u>Total</u>
2600 Operation and Maintenance of Plant Services				
100 Personnel Services – Salaries				
100 Personnel Services – Salaries				540,943.88
Total Personnel Services – Salaries				\$540,943.88
200 Personnel Services – Employee Benefits				
210 Group Insurance – Contracted Provider				187,767.18
220 Social Security Contributions				39,705.64
230 PSERS Retirement Contributions				156,238.20
Total Personnel Services – Employee Benefits				\$383,711.02
300 Purchased Professional and Technical Services				
324 Professional Educational Services – Employee Training and Development Services				597.50
330 Other Professional Services				5,271.00
Total Purchased Professional and Technical Services				\$5,868.50
400 Purchased Property Services				
410 Cleaning Services				27,268.33
420 Utility Services				73,285.88
430 Repairs and Maintenance Services				167,624.22
440 Rentals				17,079.08
450 Construction Services				143,252.06
460 Extermination Services				6,275.00
490 Other Purchased Property Services				1,189.00
Total Purchased Property Services				\$435,973.57
500 Other Purchased Services				
523 General Property and Liability Insurance				101,119.00
530 Communications				8,049.73
580 Travel				781.19
Total Other Purchased Services				\$109,949.92
600 Supplies				
610 General Supplies	91,264.25	122,887.47		214,151.72
620 Energy				392,111.13
650 Supplies & Fees – Technology Related				3,075.00
Total Supplies	\$91,264.25	\$122,887.47		\$609,337.85
700 Property				
752 Capital Equipment – Original and Additional				25,913.61
Total Property				\$25,913.61
800 Other Objects				
810 Dues and Fees				3,380.00
Total Other Objects				\$3,380.00
Total 2600 Operation and Maintenance of Plant Services	\$91,264.25	\$122,887.47		\$2,115,078.35

General Fund (10)

2610 Supervision of Operation and Maintenance of Plant Services

Elementary

Secondary

Federal

Total

100 Personnel Services – Salaries

100 Personnel Services – Salaries

52,926.10

Total Personnel Services – Salaries

\$52,926.10

200 Personnel Services – Employee Benefits

210 Group Insurance – Contracted Provider

13,831.22

220 Social Security Contributions

4,027.52

230 PSERS Retirement Contributions

15,893.78

Total Personnel Services – Employee Benefits

\$33,752.52

300 Purchased Professional and Technical Services

324 Professional Educational Services – Employee Training and Development Services

45.00

Total Purchased Professional and Technical Services

\$45.00

Total 2610 Supervision of Operation and Maintenance of Plant Services

\$86,723.62

General Fund (10)

2611 Supervision of Operation and Maintenance of Plant Services – Head of Component

Elementary

Secondary

Federal

Total

100 Personnel Services – Salaries

100 Personnel Services – Salaries

52,926.10

Total Personnel Services – Salaries

\$52,926.10

200 Personnel Services – Employee Benefits

210 Group Insurance – Contracted Provider

13,831.22

220 Social Security Contributions

4,027.52

230 PSERS Retirement Contributions

15,893.78

Total Personnel Services – Employee Benefits

\$33,752.52

300 Purchased Professional and Technical Services

324 Professional Educational Services – Employee Training and Development Services

45.00

Total Purchased Professional and Technical Services

\$45.00

Total 2611 Supervision of Operation and Maintenance of Plant Services – Head of Component

\$86,723.62

General Fund (10)

	<u>Elementary</u>	<u>Secondary</u>	<u>Federal</u>	<u>Total</u>
2620 Operation of Buildings Services				
100 Personnel Services – Salaries				
100 Personnel Services – Salaries				488,017.78
Total Personnel Services – Salaries				\$488,017.78
200 Personnel Services – Employee Benefits				
210 Group Insurance – Contracted Provider				173,935.96
220 Social Security Contributions				35,678.12
230 PSERS Retirement Contributions				140,344.42
Total Personnel Services – Employee Benefits				\$349,958.50
300 Purchased Professional and Technical Services				
324 Professional Educational Services – Employee Training and Development Services				552.50
330 Other Professional Services				5,271.00
Total Purchased Professional and Technical Services				\$5,823.50
400 Purchased Property Services				
410 Cleaning Services				27,268.33
420 Utility Services				73,285.88
430 Repairs and Maintenance Services				167,624.22
440 Rentals				17,079.08
450 Construction Services				143,252.06
460 Extermination Services				6,275.00
490 Other Purchased Property Services				1,189.00
Total Purchased Property Services				\$435,973.57
500 Other Purchased Services				
523 General Property and Liability Insurance				101,119.00
530 Communications				8,049.73
580 Travel				781.19
Total Other Purchased Services				\$109,949.92
600 Supplies				
610 General Supplies	91,264.25	122,887.47		214,151.72
620 Energy				392,111.13
650 Supplies & Fees – Technology Related				3,075.00
Total Supplies	\$91,264.25	\$122,887.47		\$609,337.85
700 Property				
752 Capital Equipment – Original and Additional				25,913.61
Total Property				\$25,913.61
800 Other Objects				
810 Dues and Fees				3,380.00
Total Other Objects				\$3,380.00
Total 2620 Operation of Buildings Services	\$91,264.25	\$122,887.47		\$2,028,354.73

General Fund (10)

	<u>Elementary</u>	<u>Secondary</u>	<u>Federal</u>	<u>Total</u>
2700 Student Transportation Services				
300 <u>Purchased Professional and Technical Services</u>				
330 Other Professional Services				500.00
Total Purchased Professional and Technical Services				\$500.00
500 <u>Other Purchased Services</u>				
513 Contracted Carriers				877,734.65
516 Student Transportation Services From the IU				3,119.03
Total Other Purchased Services				\$880,853.68
600 <u>Supplies</u>				
630 Food				87.00
Total Supplies				\$87.00
Total 2700 Student Transportation Services				\$881,440.68

General Fund (10)

2720 Vehicle Operation Services

Elementary

Secondary

Federal

Total

300 Purchased Professional and Technical Services

330 Other Professional Services

500.00

Total Purchased Professional and Technical Services

\$500.00

500 Other Purchased Services

513 Contracted Carriers

809,566.25

516 Student Transportation Services From the IU

3,119.03

Total Other Purchased Services

\$812,685.28

600 Supplies

630 Food

87.00

Total Supplies

\$87.00

Total 2720 Vehicle Operation Services

\$813,272.28

General Fund (10)

2750 Nonpublic Transportation

Elementary

Secondary

Federal

Total

500 Other Purchased Services

513 Contracted Carriers

68,168.40

Total Other Purchased Services

\$68,168.40

Total 2750 Nonpublic Transportation

\$68,168.40

General Fund (10)

	<u>Elementary</u>	<u>Secondary</u>	<u>Federal</u>	<u>Total</u>
2800 Support Services – Central				
100 Personnel Services – Salaries				
100 Personnel Services – Salaries				170,923.88
Total Personnel Services – Salaries				\$170,923.88
200 Personnel Services – Employee Benefits				
210 Group Insurance – Contracted Provider				39,891.12
220 Social Security Contributions				12,852.61
230 PSERS Retirement Contributions				50,824.49
Total Personnel Services – Employee Benefits				\$103,568.22
300 Purchased Professional and Technical Services				
324 Professional Educational Services – Employee Training and Development Services				1,050.00
330 Other Professional Services				15,059.80
Total Purchased Professional and Technical Services				\$16,109.80
400 Purchased Property Services				
430 Repairs and Maintenance Services				8,294.13
Total Purchased Property Services				\$8,294.13
500 Other Purchased Services				
530 Communications				67,768.13
550 Printing and Binding				287.00
580 Travel				1,865.88
Total Other Purchased Services				\$69,921.01
600 Supplies				
610 General Supplies				320,640.73
650 Supplies & Fees – Technology Related				924.00
Total Supplies				\$321,564.73
700 Property				
752 Capital Equipment – Original and Additional				254,699.82
Total Property				\$254,699.82
Total 2800 Support Services – Central				\$945,081.59

General Fund (10)

2810 Planning, Research, Development and Evaluation Services

Elementary

Secondary

Federal

Total

100 Personnel Services – Salaries

100 Personnel Services – Salaries 170,923.88

Total Personnel Services – Salaries \$170,923.88

200 Personnel Services – Employee Benefits

210 Group Insurance – Contracted Provider 39,891.12

220 Social Security Contributions 12,852.61

230 PSERS Retirement Contributions 50,824.49

Total Personnel Services – Employee Benefits \$103,568.22

300 Purchased Professional and Technical Services

324 Professional Educational Services – Employee Training and Development Services 1,050.00

330 Other Professional Services 15,059.80

Total Purchased Professional and Technical Services \$16,109.80

400 Purchased Property Services

430 Repairs and Maintenance Services 8,294.13

Total Purchased Property Services \$8,294.13

500 Other Purchased Services

530 Communications 67,768.13

550 Printing and Binding 287.00

580 Travel 1,865.88

Total Other Purchased Services \$69,921.01

600 Supplies

610 General Supplies 320,640.73

650 Supplies & Fees – Technology Related 924.00

Total Supplies \$321,564.73

700 Property

752 Capital Equipment – Original and Additional 254,699.82

Total Property \$254,699.82

Total 2810 Planning, Research, Development and Evaluation Services \$945,081.59

General Fund (10)

	<u>Total</u>
3000 Operation of Non-Instructional Services	
100 Personnel Services – Salaries	
100 Personnel Services – Salaries	242,368.94
Total Personnel Services – Salaries	\$242,368.94
200 Personnel Services – Employee Benefits	
210 Group Insurance – Contracted Provider	6,412.31
220 Social Security Contributions	18,507.32
230 PSERS Retirement Contributions	42,560.63
Total Personnel Services – Employee Benefits	\$67,480.26
300 Purchased Professional and Technical Services	
330 Other Professional Services	55,268.30
390 Other Purchased Professional and Technical Services	30,871.14
Total Purchased Professional and Technical Services	\$86,139.44
400 Purchased Property Services	
430 Repairs and Maintenance Services	5,746.61
440 Rentals	8,962.19
Total Purchased Property Services	\$14,708.80
500 Other Purchased Services	
510 Student Transportation Services	77,568.74
520 Insurance – General	10,844.00
530 Communications	548.10
549 Other Advertising/Public Relations	425.00
550 Printing and Binding	461.74
580 Travel	11,214.50
Total Other Purchased Services	\$101,062.08
600 Supplies	
610 General Supplies	87,411.19
630 Food	1,191.43
640 Books and Periodicals	471.77
Total Supplies	\$89,074.39
700 Property	
752 Capital Equipment – Original and Additional	19,823.62
Total Property	\$19,823.62
800 Other Objects	
810 Dues and Fees	2,885.00
890 Miscellaneous Expenditures	11,251.30
Total Other Objects	\$14,136.30
Total 3000 Operation of Non-Instructional Services	\$634,793.83

General Fund (10)

3200 Student Activities

Elementary

Secondary

Federal

Total

100 Personnel Services – Salaries

100 Personnel Services – Salaries

242,368.94

Total Personnel Services – Salaries

\$242,368.94

200 Personnel Services – Employee Benefits

210 Group Insurance – Contracted Provider

6,412.31

220 Social Security Contributions

18,507.32

230 PSERS Retirement Contributions

42,560.63

Total Personnel Services – Employee Benefits

\$67,480.26

300 Purchased Professional and Technical Services

330 Other Professional Services

51,639.30

390 Other Purchased Professional and Technical Services

30,871.14

Total Purchased Professional and Technical Services

\$82,510.44

400 Purchased Property Services

430 Repairs and Maintenance Services

5,746.61

440 Rentals

8,962.19

Total Purchased Property Services

\$14,708.80

500 Other Purchased Services

510 Student Transportation Services

77,568.74

520 Insurance – General

10,844.00

530 Communications

548.10

549 Other Advertising/Public Relations

425.00

550 Printing and Binding

461.74

580 Travel

11,214.50

Total Other Purchased Services

\$101,062.08

600 Supplies

610 General Supplies

87,411.19

630 Food

1,191.43

640 Books and Periodicals

471.77

Total Supplies

\$89,074.39

700 Property

752 Capital Equipment – Original and Additional

19,823.62

Total Property

\$19,823.62

800 Other Objects

810 Dues and Fees

2,885.00

890 Miscellaneous Expenditures

11,251.30

Total Other Objects

\$14,136.30

Total 3200 Student Activities

\$631,164.83

General Fund (10)

3300 Community Services

Elementary

Secondary

Federal

Total

300 Purchased Professional and Technical Services

330 Other Professional Services

3,629.00

Total Purchased Professional and Technical Services

\$3,629.00

Total 3300 Community Services

\$3,629.00

General Fund (10)

5000 Other Expenditures and Financing Uses

Total

800 Other Objects

830 Interest 13,640.42

Total Other Objects \$13,640.42

900 Other Uses of Funds

920 Authority Obligations 50,621.00

930 Fund Transfers 1,846,840.00

932 Capital Reserve Fund Transfers Applicable To Fund 32 200,000.00

Total Other Uses of Funds \$2,097,461.00

Total 5000 Other Expenditures and Financing Uses \$2,111,101.42

General Fund (10)

	<u>Elementary</u>	<u>Secondary</u>	<u>Federal</u>	<u>Total</u>
5100 Debt Service / Other Expenditures and Financing Uses				
800 Other Objects				
830 Interest				13,640.42
Total Other Objects				\$13,640.42
900 Other Uses of Funds				
920 Authority Obligations				50,621.00
Total Other Uses of Funds				\$50,621.00
Total 5100 Debt Service / Other Expenditures and Financing Uses				\$64,261.42

General Fund (10)

	<u>Elementary</u>	<u>Secondary</u>	<u>Federal</u>	<u>Total</u>
5110 Debt Service				
800 Other Objects				
830 Interest				13,640.42
Total Other Objects				\$13,640.42
900 Other Uses of Funds				
920 Authority Obligations				50,621.00
Total Other Uses of Funds				\$50,621.00
Total 5110 Debt Service				\$64,261.42

General Fund (10)

5200 Interfund Transfers – Out

Elementary

Secondary

Federal

Total

900 Other Uses of Funds

930 Fund Transfers

1,846,840.00

932 Capital Reserve Fund Transfers Applicable To Fund 32

200,000.00

Total Other Uses of Funds

\$2,046,840.00

Total 5200 Interfund Transfers – Out

\$2,046,840.00

General Fund (10)

5230 Capital Projects Fund Transfers

Elementary

Secondary

Federal

Total

900 Other Uses of Funds

932 Capital Reserve Fund Transfers Applicable To Fund 32

200,000.00

Total Other Uses of Funds

\$200,000.00

Total 5230 Capital Projects Fund Transfers

\$200,000.00

General Fund (10)

5240 Debt Service Fund Transfers

Elementary

Secondary

Federal

Total

900 Other Uses of Funds

930 Fund Transfers

1,844,325.00

Total Other Uses of Funds

\$1,844,325.00

Total 5240 Debt Service Fund Transfers

\$1,844,325.00

General Fund (10)

	<u>Elementary</u>	<u>Secondary</u>	<u>Federal</u>	<u>Total</u>
5250 Enterprise Fund Transfers				
900 <u>Other Uses of Funds</u>				
930 Fund Transfers				2,515.00
Total Other Uses of Funds				\$2,515.00
Total 5250 Enterprise Fund Transfers				\$2,515.00

Capital Reserve Fund - § 1431 (32)

2000 Support Services

400 Purchased Property Services

450 Construction Services

Total

11,529.00

Total Purchased Property Services

\$11,529.00

Total 2000 Support Services

\$11,529.00

LEA : 116191203 Bloomsburg Area SD

Printed 2/1/2018 9:44:28 AM

Capital Reserve Fund - § 1431 (32)

2600 Operation and Maintenance of Plant Services

Elementary

Secondary

Federal

Total

400 Purchased Property Services

450 Construction Services

11,529.00

Total Purchased Property Services

\$11,529.00

Total 2600 Operation and Maintenance of Plant Services

\$11,529.00

LEA : 116191203 Bloomsburg Area SD

Printed 2/1/2018 9:44:28 AM

Capital Reserve Fund - § 1431 (32)

2620 Operation of Buildings Services

Elementary

Secondary

Federal

Total

400 Purchased Property Services

450 Construction Services

11,529.00

Total Purchased Property Services

\$11,529.00

Total 2620 Operation of Buildings Services

\$11,529.00

Capital Reserve Fund - § 1431 (32)

3000 Operation of Non-Instructional Services

Total

700 Property

752 Capital Equipment – Original and Additional

36,889.00

Total Property

\$36,889.00

Total 3000 Operation of Non-Instructional Services

\$36,889.00

Capital Reserve Fund - § 1431 (32)

3200 Student Activities

Elementary

Secondary

Federal

Total

700 Property

752 Capital Equipment – Original and Additional

36,889.00

Total Property

\$36,889.00

Total 3200 Student Activities

\$36,889.00

Capital Reserve Fund - § 1431 (32)

4000 Facilities Acquisition, Construction and Improvement Services

Total

300 Purchased Professional and Technical Services

330 Other Professional Services

17,721.70

Total Purchased Professional and Technical Services

\$17,721.70

Total 4000 Facilities Acquisition, Construction and Improvement Services

\$17,721.70

Capital Reserve Fund - § 1431 (32)

4200 Existing Site Improvement Services

Elementary

Secondary

Federal

Total

300 Purchased Professional and Technical Services

330 Other Professional Services

2,000.00

Total Purchased Professional and Technical Services

\$2,000.00

Total 4200 Existing Site Improvement Services

\$2,000.00

Capital Reserve Fund - § 1431 (32)

4400 Architecture and Engineering Services / Educational Specifications – Improvements

Elementary

Secondary

Federal

Total

300 Purchased Professional and Technical Services

330 Other Professional Services

14,096.70

Total Purchased Professional and Technical Services

\$14,096.70

Total 4400 Architecture and Engineering Services / Educational Specifications – Improvements

\$14,096.70

LEA : 116191203 Bloomsburg Area SD

Printed 2/1/2018 9:44:33 AM

Capital Reserve Fund - § 1431 (32)

4600 Existing Building Improvement Services

Elementary

Secondary

Federal

Total

300 Purchased Professional and Technical Services

330 Other Professional Services

1,625.00

Total Purchased Professional and Technical Services

\$1,625.00

Total 4600 Existing Building Improvement Services

\$1,625.00

Debt Service Fund (40)

2000 Support Services

800 Other Objects

810 Dues and Fees

Total

950.00

Total Other Objects

\$950.00

Total 2000 Support Services

\$950.00

LEA : 116191203 Bloomsburg Area SD

Printed 2/1/2018 9:44:31 AM

Debt Service Fund (40)

2500 Support Services – Business

Elementary

Secondary

Federal

Total

800 Other Objects

810 Dues and Fees

950.00

Total Other Objects

\$950.00

Total 2500 Support Services – Business

\$950.00

Debt Service Fund (40)

2510 Fiscal Services

Elementary

Secondary

Federal

Total

800 Other Objects

810 Dues and Fees

950.00

Total Other Objects

\$950.00

Total 2510 Fiscal Services

\$950.00

LEA : 116191203 Bloomsburg Area SD

Printed 2/1/2018 9:44:31 AM

Debt Service Fund (40)

2515 Financial Accounting Services

Elementary

Secondary

Federal

Total

800 Other Objects

810 Dues and Fees

950.00

Total Other Objects

\$950.00

Total 2515 Financial Accounting Services

\$950.00

Debt Service Fund (40)

5000 Other Expenditures and Financing Uses

Total

800 Other Objects

830 Interest 338,375.00

Total Other Objects \$338,375.00

900 Other Uses of Funds

910 Redemption of Principal 1,505,000.00

Total Other Uses of Funds \$1,505,000.00

Total 5000 Other Expenditures and Financing Uses \$1,843,375.00

Debt Service Fund (40)

5100 Debt Service / Other Expenditures and Financing Uses

Elementary

Secondary

Federal

Total

800 Other Objects

830 Interest

338,375.00

Total Other Objects

\$338,375.00

900 Other Uses of Funds

910 Redemption of Principal

1,505,000.00

Total Other Uses of Funds

\$1,505,000.00

Total 5100 Debt Service / Other Expenditures and Financing Uses

\$1,843,375.00

Debt Service Fund (40)

	<u>Elementary</u>	<u>Secondary</u>	<u>Federal</u>	<u>Total</u>
5110 Debt Service				
800 Other Objects				
830 Interest				338,375.00
Total Other Objects				\$338,375.00
900 Other Uses of Funds				
910 Redemption of Principal				1,505,000.00
Total Other Uses of Funds				\$1,505,000.00
Total 5110 Debt Service				\$1,843,375.00

	<u>General Fund(10)</u>	<u>Public Purpose Trust(27)</u>	<u>Other Compt Approved (28)</u>	<u>Athletic / Activity(29)</u>	<u>Capital Reserve (690, 1850)(31)</u>
1000 Instruction					
1100 Regular Programs - Elementary / Secondary	9,810,132.76				
1200 Special Programs - Elementary / Secondary	2,704,874.47				
1300 Vocational Education	1,260,524.09				
1400 Other Instructional Programs - Elementary / Secondary	172,781.05				
1500 Nonpublic School Programs	2,492.52				
Total Instruction	\$13,950,804.89				
2000 Support Services					
2100 Support Services - Students	546,947.44				
2200 Support Services - Instructional Staff	766,675.70				
2300 Support Services - Administration	1,406,743.32				
2400 Support Services - Pupil Health	291,923.29				
2500 Support Services - Business	442,756.10				
2600 Operation and Maintenance of Plant Services	2,115,078.35				
2700 Student Transportation Services	881,440.68				
2800 Support Services - Central	945,081.59				
Total Support Services	\$7,396,646.47				
3000 Operation of Non-Instructional Services					
3200 Student Activities	631,164.83				
3300 Community Services	3,629.00				
Total Operation of Non-Instructional Services	\$634,793.83				
4000 Facilities Acquisition, Construction and Improvement Services					
4200 Existing Site Improvement Services					
4400 Architecture and Engineering Services / Educational Specifications - Improvements					
4600 Existing Building Improvement Services					
Total Facilities Acquisition, Construction and Improvement Services					
5000 Other Expenditures and Financing Uses					
5100 Debt Service / Other Expenditures and Financing Uses	64,261.42				
5200 Interfund Transfers - Out	2,046,840.00				
Total Other Expenditures and Financing Uses	\$2,111,101.42				
TOTAL ACTUAL EXPENDITURES & OTHER FINANCING USES	\$24,093,346.61				

	<u>Capital Reserve (1431)(32)</u>	<u>Other Capital Projects Fund(39)</u>	<u>Debt Service(40)</u>	<u>Permanent(90)</u>	<u>Total</u>
1000 Instruction					
1100 Regular Programs - Elementary / Secondary					9,810,132.76
1200 Special Programs - Elementary / Secondary					2,704,874.47
1300 Vocational Education					1,260,524.09
1400 Other Instructional Programs - Elementary / Secondary					172,781.05
1500 Nonpublic School Programs					2,492.52
Total Instruction					\$13,950,804.89
2000 Support Services					
2100 Support Services - Students					546,947.44
2200 Support Services - Instructional Staff					766,675.70
2300 Support Services - Administration					1,406,743.32
2400 Support Services - Pupil Health					291,923.29
2500 Support Services - Business			950.00		443,706.10
2600 Operation and Maintenance of Plant Services	11,529.00				2,126,607.35
2700 Student Transportation Services					881,440.68
2800 Support Services - Central					945,081.59
Total Support Services	\$11,529.00		\$950.00		\$7,409,125.47
3000 Operation of Non-Instructional Services					
3200 Student Activities	36,889.00				668,053.83
3300 Community Services					3,629.00
Total Operation of Non-Instructional Services	\$36,889.00				\$671,682.83
4000 Facilities Acquisition, Construction and Improvement Services					
4200 Existing Site Improvement Services	2,000.00				2,000.00
4400 Architecture and Engineering Services / Educational Specifications - Improvements	14,096.70				14,096.70
4600 Existing Building Improvement Services	1,625.00				1,625.00
Total Facilities Acquisition, Construction and Improvement Services	\$17,721.70				\$17,721.70
5000 Other Expenditures and Financing Uses					
5100 Debt Service / Other Expenditures and Financing Uses			1,843,375.00		1,907,636.42
5200 Interfund Transfers - Out					2,046,840.00
Total Other Expenditures and Financing Uses			\$1,843,375.00		\$3,954,476.42
TOTAL ACTUAL EXPENDITURES & OTHER FINANCING USES	\$66,139.70		\$1,844,325.00		\$26,003,811.31

PSERS Salary Data (Salary Data should relate to the General Fund only)

Amount Description	Amount
Total Salary Base for salaries subject to PSERS withholding	9,933,587.21
Total Federally Funded salaries subject to PSERS withholding	1,069,747.99
	<hr/>

Title I Expenditure Data

Amount Description	Amount
Expenditures Funded with Current Title I Funds	442,901.00
Expenditures Funded with Carry over Title I Funds	
	<hr/>
Total Title I Expenditure Data	\$442,901.00
	<hr/>

Title I ARRA Amount

Amount Description	Amount
Portion of Total Title I Expenditures funded with ARRA Title I	
	<hr/>

Benefits for Staff Relative to Collective Bargaining Agreements

	OBJECT	COVERED	NOT COVERED	TOTAL
10 General Fund	No Self Insurance data to report			
	211 Medical Insurance	1,859,200.17	243,212.37	2,102,412.54
	212 Dental Insurance	86,636.82	12,384.28	99,021.10
	215 Eye Care Insurance	11,002.92	1,576.28	12,579.20
	216 Prescription Insurance			
	271 Self-Insurance Medical Benefits			
	272 Self-Insurance Dental Benefits			
	275 Self-Insurance Eye Care Benefits			
	276 Self-Insurance Prescription Benefits			
	FUND TOTAL	\$1,956,839.91	\$257,172.93	\$2,214,012.84
50 Enterprise Fund	No Self Insurance data to report			
	211 Medical Insurance			
	212 Dental Insurance			
	215 Eye Care Insurance			
	216 Prescription Insurance			
	271 Self-Insurance Medical Benefits			
	272 Self-Insurance Dental Benefits			
	275 Self-Insurance Eye Care Benefits			
	276 Self-Insurance Prescription Benefits			
	FUND TOTAL			
60 Internal Service Fund	No Self Insurance data to report			
	211 Medical Insurance			
	212 Dental Insurance			
	215 Eye Care Insurance			
	216 Prescription Insurance			
	271 Self-Insurance Medical Benefits			
	272 Self-Insurance Dental Benefits			
	275 Self-Insurance Eye Care Benefits			
	276 Self-Insurance Prescription Benefits			
	FUND TOTAL			
Total of All Funds		\$1,956,839.91	\$257,172.93	\$2,214,012.84

LEA : 116191203 Bloomsburg Area SD

Printed 2/1/2018 9:44:41 AM

Function	Special Education (Prior Year)	Nonspecial Education (Prior Year)	Total (Prior Year)	Special Education (Current Year)	Nonspecial Education (Current Year)	Total (Current Year)
2120 Guidance Services	61,980.79	408,283.16	470,263.95	66,822.30	408,443.02	475,265.32
2140 Psychological Services	52,444.57	17,481.52	69,926.09	53,761.59	17,920.53	71,682.12
2150 Speech Pathology and Audiology Services						
2160 Social Work Services						
2260 Instruction and Curriculum Development Services	151,447.84	2,525.94	153,973.78	181,467.96	114,588.85	296,056.81
2350 Legal and Accounting Services	1,745.50	18,671.15	20,416.65	339.00	19,494.22	19,833.22
2420 Medical Services						
2440 Nursing Services	35,981.37	237,018.44	272,999.81	41,161.18	250,762.11	291,923.29
2700 Student Transportation Services	161,574.10	686,167.55	847,741.65	166,914.80	645,770.48	812,685.28
Total	\$465,174.17	\$1,370,147.76	\$1,835,321.93	\$510,466.83	\$1,456,979.21	\$1,967,446.04

(PRINCIPAL AMOUNTS ONLY)

GOVERNMENTAL FUNDS/ ACTIVITIES

	Short-Term Borrowing	General Obligation Bonds/Notes	Authority Building Obligations	Other Long-Term Debt	Other Post-Employment Benefits (OPEB)	Compensated Absences	Net Pension Liability	Total
1. Debt at Beginning of Fiscal Year		12,585,000.00	331,846.00		488,532.00	713,472.00	32,054,000.00	46,172,850.00
2. Additional Debt Incurred During Year					48,067.00		5,015,000.00	5,063,067.00
3. Retirements and Repayments		1,505,000.00	50,621.00			28,810.00		1,584,431.00
4. Debt at End of Fiscal Year		11,080,000.00	281,225.00		536,599.00	684,662.00	37,069,000.00	49,651,486.00
5. Accreted Interest at End Of Fiscal Year								
6. Total Debt and Accreted Interest		11,080,000.00	281,225.00		536,599.00	684,662.00	37,069,000.00	49,651,486.00
7. Current Portion P&I - Due within 1 year		1,843,195.00	62,674.00					1,905,869.00
8. Interest Paid during current fiscal year		338,375.00	13,640.42					352,015.42

(PRINCIPAL AMOUNTS ONLY)

PROPRIETARY FUNDS

- 1. Debt at Beginning of Fiscal Year
- 2. Additional Debt Incurred During Year
- 3. Retirements and Repayments
- 4. Debt at End of Fiscal Year
- 5. Accreted Interest at End Of Fiscal Year
- 6. Total Debt and Accreted Interest
- 7. Current Portion P&I - Due within 1 year
- 8. Interest Paid during current fiscal year

Total Principal and Interest Payments Made by Your School - All Funds

Function	Fund		Principal (910)	Principal (920)	Interest (830)	Total (Principal +Interest)	Misc Other Uses (990)
5110	10	General Fund		50,621.00	13,640.42	64,261.42	
5110	20	Special Revenue Funds					
5110	30	Capital Projects Funds					
5110	40	Debt Service Fund	1,505,000.00		338,375.00	1,843,375.00	
5110	90	Permanent Fund					
5120	10	General Fund					
5120	20	Special Revenue Funds					
5120	30	Capital Projects Funds					
5120	40	Debt Service Fund					

Total Debt Payments - Governmental Funds			\$1,505,000.00	\$50,621.00	\$352,015.42	\$1,907,636.42	
---	--	--	-----------------------	--------------------	---------------------	-----------------------	--

Function	Fund		Principal (910)	Principal (920)	Interest (830)	Total (Principal +Interest)
5110	50	Enterprise Fund				
5110	60	Internal Service Fund				
5120	50	Enterprise Fund				
5120	60	Internal Service Fund				

Total Debt Payments - Proprietary Funds						
--	--	--	--	--	--	--

Debt Details
Governmental Funds/ Activities

Debt Category	Debt Issue Date (MM/YYYY)	Principal Amounts Only				Debt at End of Fiscal Year	Current Portion Due Within One Year (Principal and Interest)	Interest Paid During Fiscal Year
		Debt at Beginning of Fiscal Year	Additions	Reductions / Repayments				
General Obligation Bonds/Notes – CIB	05/2013	5,880,000.00		465,000.00	5,415,000.00	621,205.00	158,760.00	
General Obligation Bonds/Notes – CIB	06/2011	6,705,000.00		1,040,000.00	5,665,000.00	1,221,990.00	179,615.00	
Authority Building Obligations – CIB	11/2007	331,846.00		50,621.00	281,225.00	62,674.00	13,640.42	
Compensated Absences		713,472.00		28,810.00	684,662.00			
Other Post-Employment Benefits (OPEB)		488,532.00	48,067.00		536,599.00			
Net Pension Liability		32,054,000.00	5,015,000.00		37,069,000.00			
Totals for Debt Entered:		\$46,172,850.00	\$5,063,067.00	\$1,584,431.00	\$49,651,486.00	\$1,905,869.00	\$352,015.42	

General Fund (10)

Section 1: Tuition/Purchased Services as Reported within Expenditure Detail

	Amount
Tuition Reported in General Fund Expenditures 1000-560	1,765,154.86
Purchased Services in General Fund Expenditures 1000-594 and 1000-597	

Section 1 Total	\$1,765,154.86
------------------------	-----------------------

Section 2: Tuition Paid to Institution Types During Fiscal Year

	Tuition Paid For Nonspecial Education	Tuition Paid For Special Education	Total
1 1306 Institutions			
2 Institutionalized Children's Programs			
3 Juveniles Incarcerated in Adult Facilities			
4 Residential Treatment Facilities	17,225.54	34,456.81	51,682.35
5 Other Local Education Agencies	37,542.74	178,593.95	216,136.69
6 Brick and Mortar Charter Schools			
7 Cyber Charter Schools	221,422.36	95,299.45	316,721.81
8 Career and Technology Centers	721,924.00	98,348.00	820,272.00
9 Approved Private Schools		360,342.01	360,342.01
10 PA Chartered Schools for the Deaf and Blind			
11 Private Residential Rehabilitative Institutions			
12 Juvenile Detention Centers			
13 Special Program Jointures			
14 Other Tuition Not Included Elsewhere In This Section			

Section 2 Total	\$998,114.64	\$767,040.22	\$1,765,154.86
------------------------	---------------------	---------------------	-----------------------

Food Service / Cafeteria Operations Fund (51)

	<u>Total</u>
1000 Instruction	
100 Personnel Services – Salaries	
100 Personnel Services – Salaries	252,584.00
Total Personnel Services – Salaries	\$252,584.00
200 Personnel Services – Employee Benefits	
210 Group Insurance – Contracted Provider	79,133.00
220 Social Security Contributions	46,651.00
230 PSERS Retirement Contributions	47,462.00
Total Personnel Services – Employee Benefits	\$173,246.00
600 Supplies	
610 General Supplies	23,440.00
630 Food	309,652.00
Total Supplies	\$333,092.00
700 Property	
740 Depreciation	12,502.00
Total Property	\$12,502.00
800 Other Objects	
890 Miscellaneous Expenditures	5,807.00
Total Other Objects	\$5,807.00
Total 1000 Instruction	\$777,231.00

Food Service / Cafeteria Operations Fund (51)

1100 Regular Programs – Elementary / Secondary

Elementary

Secondary

Federal

Total

100 Personnel Services – Salaries

100 Personnel Services – Salaries

252,584.00

Total Personnel Services – Salaries

\$252,584.00

200 Personnel Services – Employee Benefits

210 Group Insurance – Contracted Provider

79,133.00

220 Social Security Contributions

46,651.00

230 PSERS Retirement Contributions

47,462.00

Total Personnel Services – Employee Benefits

\$173,246.00

600 Supplies

610 General Supplies

23,440.00

630 Food

309,652.00

Total Supplies

\$333,092.00

700 Property

740 Depreciation

12,502.00

Total Property

\$12,502.00

800 Other Objects

890 Miscellaneous Expenditures

5,807.00

Total Other Objects

\$5,807.00

Total 1100 Regular Programs – Elementary / Secondary

\$777,231.00

Food Service / Cafeteria Operations Fund (51)

1110 Regular Programs

Elementary Secondary Federal Total

100 Personnel Services – Salaries				
100 Personnel Services – Salaries				252,584.00
Total Personnel Services – Salaries				\$252,584.00
200 Personnel Services – Employee Benefits				
210 Group Insurance – Contracted Provider				79,133.00
220 Social Security Contributions				46,651.00
230 PSERS Retirement Contributions				47,462.00
Total Personnel Services – Employee Benefits				\$173,246.00
600 Supplies				
610 General Supplies				23,440.00
630 Food				309,652.00
Total Supplies				\$333,092.00
700 Property				
740 Depreciation				12,502.00
Total Property				\$12,502.00
800 Other Objects				
890 Miscellaneous Expenditures				5,807.00
Total Other Objects				\$5,807.00
Total 1110 Regular Programs				\$777,231.00

	<u>Food Service(51)</u>	<u>Child Care Operations(52)</u>	<u>Other Enterprise(58)</u>	<u>Internal Service(60)</u>	<u>Total</u>
1000 Instruction					
1100 Regular Programs - Elementary / Secondary		777,231.00			777,231.00
Total Instruction		\$777,231.00			\$777,231.00
TOTAL ACTUAL EXPENDITURES & OTHER FINANCING USES		\$777,231.00			\$777,231.00