

LEA Name : Bloomsburg Area SD
Address : 728 E 5th St
Bloomsburg , PA 17815

County : Columbia
AUN Number : 116191203
LEA Type : SD

Annual Financial Report Accuracy Certification Statement

For Fiscal Year Ending
6/30/2019

Pennsylvania Department of Education
&
Office of Comptroller Operations

PDE-2056: Intermediate Unit

PDE-2057: School District, AVTS/CTC, Charter School,
and Special Program Jointure

CERTIFICATION: By signing this page I agree that the electronic data submitted is a complete and accurate statement of the financial operations and status of the local education agency for the fiscal year. It has been prepared in accordance with generally accepted accounting principles and established Commonwealth of PA reporting guidelines.



Chief School Administrator Signature

Date

11/15/15



Board Secretary Signature

Date

11/11/2019

David J Marsiglio

Contact Person

dmarsiglio@bloomsd.k12.pa.us

Contact Person E-mail Address

(570)784-5000

Ext :

Contact Person Telephone Number

(570)387-8832

Contact Person Fax Number

Audit Certification
Annual Financial Report:
For Fiscal Year Ending 6/30/2019
(Pursuant to PA School Code Section 218(b))

LEA Name : Bloomsburg Area SD
AUN Number : 116191203
County : Columbia


Audit Certification Due: 12/31/2019

This certification is applicable to the Annual Financial Report data submitted through the Consolidated Financial Reporting System on: 11/11/2019
Date

Auditing Firm: **WAGNER, DREESE, ELSASSER & ASSOCIATES, PC**
CERTIFIED PUBLIC ACCOUNTANTS & CONSULTANTS
1372 NORTH SUSQUEHANNA TRAIL, SUITE 210
SELINSGROVE, PA 17870

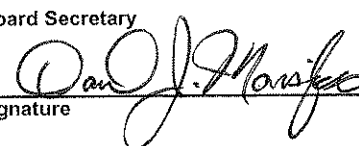
CERTIFICATION: By signing this page I agree that the financial statements of the school have been properly audited as noted above pursuant to Article XXIV, and in the auditor's professional opinion, the Annual Financial Report (PDE-2057) submitted on the date referenced is materially consistent with the audited financial statements.

Chief School Administrator


Signature

12/19/19
Date

Board Secretary


Signature

12/19/19
Date

David J Marsiglio

Contact Person

dmarsiglio@bloomsd.k12.pa.us

Contact Person E-mail Address

(570)784-5000

Ext :

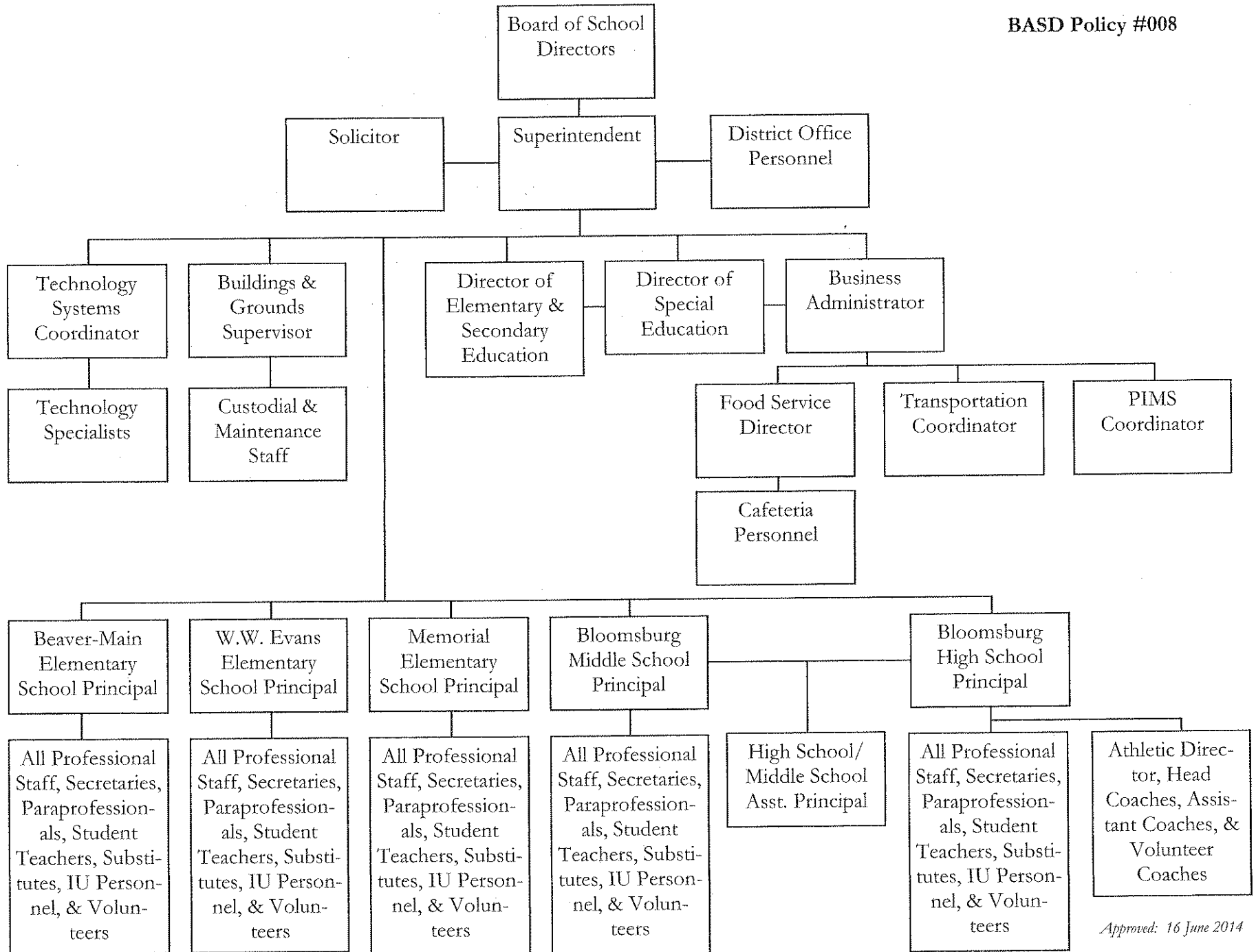
Contact Person Telephone Number

(570)387-8832

Contact Person Fax Number

**Bloomsburg Area School District
Organization Chart**

BASD Policy #008



Approved: 16 June 2014

<u>Val Number</u>	<u>Description</u>	<u>Justification</u>
50160	SOIN: All Governmental Fund General Obligation Bonds must include an amount for Interest Paid during Fiscal Year. Correct data or enter a justification.	2019 G. O Bond first interest payment due of \$252,896.11 on 9/1/2019.

Amounts Expressed in Whole Dollars	<u>General Fund</u> <u>(10)</u>	<u>Public Purpose Trust</u> <u>(27)</u>	<u>Other Compt Approved</u> <u>(28)</u>	<u>Athletic / Activity</u> <u>(29)</u>	<u>Capital Reserve (690.</u> <u>1850)</u> <u>(31)</u>
Assets And Deferred Outflows Of Resources					
Assets					
0100 Cash and Cash Equivalents	15,071,092				
0110 Investments	1,787,000				
0120 Taxes Receivable	639,102				
0130 Due From Other Funds					
0141 Due From Other Governments					
0142 State Revenue Receivable	717,662				
0143 Federal Revenue Receivable	22,038				
0145 Other Intergovernmental Revenue Receivable					
0146 Due from Primary Government					
0147 Due from Component Unit					
0150 Other Receivables	194,746				
0170 Inventories					
0180 Prepaid Expenses (Expenditures)					
0190 Other Current Assets					
Total Assets	\$18,431,640				
0910 Deferred Outflows of Resources					
Total Assets And Deferred Outflows Of Resources	\$18,431,640				

Amounts Expressed in Whole Dollars	<u>Capital Reserve (1431)</u> <u>(32)</u>	<u>Other Capital Projects</u> <u>Fund</u> <u>(39)</u>	<u>Debt Service</u> <u>(40)</u>	<u>Permanent</u> <u>(90)</u>	<u>Total Governmental</u> <u>Funds</u>
Assets And Deferred Outflows Of Resources					
Assets					
0100 Cash and Cash Equivalents	879,686	5,999	153		15,956,930
0110 Investments		11,543,023			13,330,023
0120 Taxes Receivable					639,102
0130 Due From Other Funds					
0141 Due From Other Governments					
0142 State Revenue Receivable					717,662
0143 Federal Revenue Receivable					22,038
0145 Other Intergovernmental Revenue Receivable					
0146 Due from Primary Government					
0147 Due from Component Unit					
0150 Other Receivables					194,746
0170 Inventories					
0180 Prepaid Expenses (Expenditures)					
0190 Other Current Assets					
Total Assets	\$879,686	\$11,549,022	\$153		\$30,860,501
0910 Deferred Outflows of Resources					
Total Assets And Deferred Outflows Of Resources	\$879,686	\$11,549,022	\$153		\$30,860,501

Amounts Expressed in Whole Dollars

	<u>General Fund</u> <u>(10)</u>	<u>Public Purpose Trust</u> <u>(27)</u>	<u>Other Compt Approved</u> <u>(28)</u>	<u>Athletic / Activity</u> <u>(29)</u>	<u>Capital Reserve (690.</u> <u>1850)</u> <u>(31)</u>
Liabilities And Deferred Inflows Of Resources And Fund Balances					
Liabilities					
0400 Due to Other Funds	54,157				
0411 Due to Other Governments					
0412 Due to Primary Government					
0413 Due to Component Unit					
0420 Accounts Payable	360,915				
0430 Contracts Payable					
0440 Current Portion of Long-Term Debt					
0450 Short-Term Payables					
0461 Accrued Salaries and Benefits	1,751,839				
0462 Payroll Deductions and Withholding	2,466,447				
0480 Unearned Revenues					
0490 Other Current Liabilities					
Total Liabilities	\$4,633,358				
0950 Deferred Inflows of Resources	649,197				
Fund Balances					
0810 Nonspendable Fund Balance					
0820 Restricted Fund Balance					
0830 Committed Fund Balance	11,910,785				
0840 Assigned Fund Balance					
0850 Unassigned Fund Balance	1,238,300				
Total Fund Balances	\$13,149,085				
Total Liabilities, Deferred Inflows Of Resources And Fund Balances	\$18,431,640				

Amounts Expressed in Whole Dollars

	<u>Capital Reserve (1431)</u> <u>(32)</u>	<u>Other Capital Projects</u> <u>Fund</u> <u>(39)</u>	<u>Debt Service</u> <u>(40)</u>	<u>Permanent</u> <u>(90)</u>	<u>Total Governmental</u> <u>Funds</u>
Liabilities And Deferred Inflows Of Resources And Fund Balances					
Liabilities					
0400 Due to Other Funds					54,157
0411 Due to Other Governments					
0412 Due to Primary Government					
0413 Due to Component Unit					
0420 Accounts Payable		2,368,063			2,728,978
0430 Contracts Payable					
0440 Current Portion of Long-Term Debt					
0450 Short-Term Payables					
0461 Accrued Salaries and Benefits					1,751,839
0462 Payroll Deductions and Withholding					2,466,447
0480 Unearned Revenues					
0490 Other Current Liabilities					
Total Liabilities		\$2,368,063			\$7,001,421
0950 Deferred Inflows of Resources					649,197
Fund Balances					
0810 Nonspendable Fund Balance					
0820 Restricted Fund Balance		9,180,959	153		9,181,112
0830 Committed Fund Balance					11,910,785
0840 Assigned Fund Balance	879,686				879,686
0850 Unassigned Fund Balance					1,238,300
Total Fund Balances	\$879,686	\$9,180,959	\$153		\$23,209,883
Total Liabilities, Deferred Inflows Of Resources And Fund Balances	\$879,686	\$11,549,022	\$153		\$30,860,501

Amounts Expressed in Whole Dollars	<u>General Fund</u> <u>(10)</u>	<u>Public Purpose Trust</u> <u>(27)</u>	<u>Other Compt Approved</u> <u>(28)</u>	<u>Athletic / Activity</u> <u>(29)</u>	<u>Capital Reserve (690.</u> <u>1850)</u> <u>(31)</u>
Revenues					
6000 Revenue from Local Sources	15,290,673				
7000 Revenue from State Sources	10,560,836				
8000 Revenue from Federal Sources	711,511				
Total Revenues	\$26,563,020				
Expenditures					
1000 Instruction	15,700,859				
2000 Support Services	8,502,830				
3000 Operation of Non-Instructional Services	755,132				
4000 Facilities Acquisition, Construction and Improvement Services					
5110 Debt Service	65,267				
5130 Refund of Prior Year Revenues / Receipts	8,122				
Total Expenditures	\$25,032,210				
Excess (Deficiency) Of Revenues Over Expenditures	\$1,530,810				
Other Financing Sources (Uses)					
9110 Face Value of Bonds Issued					
9120 Proceeds from Refunding of Bonds					
9130 Bond Premiums					
9200 Proceeds from Extended-Term Financing					
9300 Interfund Transfers - IN					
9400 Sale of or Compensation for Loss of Fixed Assets	17,657				
9710 Transfers from Component Units					
9720 Transfers from Primary Governments					
9910 Other Financing Sources Not Listed in the 9000 Series					
9990 Insurance Recoveries					
5120 Debt Service – Refunded Bonds					
5150 Bond Discounts					
5200 Interfund Transfers – Out	2,191,796				
5300 Transfers Out to Component Units/Primary Governments					
Total Other Financing Sources (Uses)	(\$2,174,139)				

Amounts Expressed in Whole Dollars	<u>Capital Reserve (1431)</u> <u>(32)</u>	<u>Other Capital Projects</u> <u>Fund</u> <u>(39)</u>	<u>Debt Service</u> <u>(40)</u>	<u>Permanent</u> <u>(90)</u>	<u>Total Governmental</u> <u>Funds</u>
Revenues					
6000 Revenue from Local Sources	17,297	513,931	105		15,822,006
7000 Revenue from State Sources					10,560,836
8000 Revenue from Federal Sources					711,511
Total Revenues	\$17,297	\$513,931	\$105		\$27,094,353
Expenditures					
1000 Instruction					15,700,859
2000 Support Services	195,991	1,210,937	476,060		10,385,818
3000 Operation of Non-Instructional Services					755,132
4000 Facilities Acquisition, Construction and Improvement Services	404,309	6,614,097			7,018,406
5110 Debt Service			1,989,608		2,054,875
5130 Refund of Prior Year Revenues / Receipts					8,122
Total Expenditures	\$600,300	\$7,825,034	\$2,465,668		\$35,923,212
Excess (Deficiency) Of Revenues Over Expenditures	(\$583,003)	(\$7,311,103)	(\$2,465,563)		(\$8,828,859)
Other Financing Sources (Uses)					
9110 Face Value of Bonds Issued			19,995,674		19,995,674
9120 Proceeds from Refunding of Bonds					
9130 Bond Premiums					
9200 Proceeds from Extended-Term Financing					
9300 Interfund Transfers - IN	200,000	19,520,564	1,990,558		21,711,122
9400 Sale of or Compensation for Loss of Fixed Assets					17,657
9710 Transfers from Component Units					
9720 Transfers from Primary Governments					
9910 Other Financing Sources Not Listed in the 9000 Series					
9990 Insurance Recoveries					
5120 Debt Service – Refunded Bonds					
5150 Bond Discounts					
5200 Interfund Transfers – Out			19,520,564		21,712,360
5300 Transfers Out to Component Units/Primary Governments					
Total Other Financing Sources (Uses)	\$200,000	\$19,520,564	\$2,465,668		\$20,012,093

Amounts Expressed in Whole Dollars	<u>General Fund</u> <u>(10)</u>	<u>Public Purpose Trust</u> <u>(27)</u>	<u>Other Compt Approved</u> <u>(28)</u>	<u>Athletic / Activity</u> <u>(29)</u>	<u>Capital Reserve</u> <u>(690.</u> <u>1850)</u> <u>(31)</u>
Special And Extraordinary Items					
9920 Special Items – Gains					
9930 Extraordinary Items – Gains					
5520 Special Items – Losses					
5530 Extraordinary Items – Losses					
Net Change In Fund Balances	(\$643,329)				
Fund Balance					
0001 Fund Balance - Beginning of Fiscal Year	13,792,418				
Fund Balance - End Of Year	\$13,149,089				

Amounts Expressed in Whole Dollars	<u>Capital Reserve (1431)</u> <u>(32)</u>	<u>Other Capital Projects</u> <u>Fund</u> <u>(39)</u>	<u>Debt Service</u> <u>(40)</u>	<u>Permanent</u> <u>(90)</u>	<u>Total Governmental</u> <u>Funds</u>
Special And Extraordinary Items					
9920 Special Items – Gains					
9930 Extraordinary Items – Gains					
5520 Special Items – Losses					
5530 Extraordinary Items – Losses					
Net Change In Fund Balances	(\$383,003)	\$12,209,461	\$105		\$11,183,234
Fund Balance					
0001 Fund Balance - Beginning of Fiscal Year	1,262,690	(3,028,504)	48		12,026,652
Fund Balance - End Of Year	\$879,687	\$9,180,957	\$153		\$23,209,886

Amounts Expressed in Whole Dollars	<u>Food Service</u> <u>(51)</u>	<u>Child Care</u> <u>Operations</u> <u>(52)</u>	<u>Other Enterprise</u> <u>(58)</u>	<u>TOTAL</u>	<u>Internal Service</u> <u>(60)</u>
Assets And Deferred Outflows Of Resources					
Current Assets					
0100 Cash and Cash Equivalents	101,988			101,988	
0110 Investments					
0130 Due From Other Funds	54,525			54,525	
0141 Due From Other Governments					
0142 State Revenue Receivable					
0143 Federal Revenue Receivable					
0146 Due from Primary Government					
0147 Due from Component Unit					
0150 Other Receivables					
0170 Inventories	23,153			23,153	
0180 Prepaid Expenses (Expenditures)					
0190 Other Current Assets					
Total Current Assets	\$179,666			\$179,666	
Noncurrent Assets					
0211 Land					
0212 Site Improvements (Net)					
0220 Buildings and Building Improvements (Net)	4,466			4,466	
0230 Machinery, Equipment and Furniture (Net)	170,166			170,166	
0250 Construction in Progress					
0260 Long Term Prepayments					
0290 Other Noncurrent Assets					
Total Noncurrent Assets	\$174,632			\$174,632	
0910 Deferred Outflows of Resources					
Total Assets And Deferred Outflows Of Resources	\$354,298			\$354,298	

Amounts Expressed in Whole Dollars	<u>Food Service</u> <u>(51)</u>	<u>Child Care</u> <u>Operations</u> <u>(52)</u>	<u>Other Enterprise</u> <u>(58)</u>	<u>TOTAL</u>	<u>Internal Service</u> <u>(60)</u>
Liabilities And Deferred Inflows Of Resources And Net Position					
Current Liabilities					
0400 Due to Other Funds	368			368	
0411 Due to Other Governments					
0413 Due to Component Unit					
0420 Accounts Payable					
0430 Contracts Payable					
0440 Current Portion of Long-Term Debt					
0450 Short-Term Payables					
0461 Accrued Salaries and Benefits					
0462 Payroll Deductions and Withholding					
0480 Unearned Revenues	6,404			6,404	
0490 Other Current Liabilities					
Total Current Liabilities	\$6,772			\$6,772	
Noncurrent Liabilities					
0510 Bonds Payable					
0520 Extended-Term Financing Agreements Payable					
0530 Lease-Purchase Obligations					
0540 Accumulated Compensated Absences					
0550 Authority Lease Obligations					
0560 Other Post-Employment Benefits (OPEB)					
0570 Net Pension Liability					
0599 Other Noncurrent Liabilities					
Total Noncurrent Liabilities					
Total Liabilities	\$6,772			\$6,772	
0950 Deferred Inflows of Resources					
Net Position					
0791 Net Investment in Capital Assets		174,632		174,632	
0008 Restricted Net Position (0792 – 0798)					
0799 Unrestricted Net Position		172,894		172,894	
Total Net Position		\$347,526		\$347,526	
Total Liabilities And Deferred Inflows Of Resources And Net Position		\$354,298		\$354,298	

Amounts Expressed in Whole Dollars	<u>Food Service</u> <u>(51)</u>	<u>Child Care Operations</u> <u>(52)</u>	<u>Other Enterprise</u> <u>(58)</u>	<u>TOTAL</u>	<u>Internal Service</u> <u>(60)</u>
Operating Revenues					
6600 Food Service Revenue	240,967			240,967	
0071 Charges for Services					
0072 Other Operating Revenue					
Total Operating Revenues	\$240,967			\$240,967	
Operating Expenses					
100 Personnel Services – Salaries	246,191			246,191	
200 Personnel Services – Employee Benefits	178,457			178,457	
300 Purchased Professional and Technical Services					
400 Purchased Property Services					
500 Other Purchased Services	3,666			3,666	
600 Supplies	331,188			331,188	
740 Depreciation	16,958			16,958	
810 Dues and Fees					
890 Miscellaneous Expenditures	2,661			2,661	
Total Operating Expenses	\$779,121			\$779,121	
Operating Income (Loss)	(\$538,154)			(\$538,154)	
Non Operating Revenues (Expenses)					
6500 Earnings on Investments	81			81	
6920 Contributions and Donations from Private Sources					
6930 Gains or Losses on Sale of Fixed Assets	1,559			1,559	
6991 Refunds of a Prior Year Expenditure					
7000 Revenue from State Sources	79,852			79,852	
8000 Revenue from Federal Sources	460,849			460,849	
9990 Insurance Recoveries					
820 Claims and Judgments Against the LEA					
830 Interest					
TOTAL Non Operating Revenues (Expenses)	\$542,341			\$542,341	
Income (Loss) Before Contributions And Transfers	\$4,187			\$4,187	

Amounts Expressed in Whole Dollars	<u>Food Service</u> <u>(51)</u>	<u>Child Care Operations</u> <u>(52)</u>	<u>Other Enterprise</u> <u>(58)</u>	<u>TOTAL</u>	<u>Internal Service</u> <u>(60)</u>
Contributions, Transfers, and Special and Extraordinary Items					
5200 Interfund Transfers – Out					
5300 Transfers Out to Component Units/Primary Governments					
5520 Special Items – Losses					
5530 Extraordinary Items – Losses					
9300 Interfund Transfers - IN	1,238			1,238	
9500 Capital Contributions					
9700 Transfers IN From Component Units/Primary Governments					
9920 Special Items – Gains					
9930 Extraordinary Items – Gains					
Change In Net Position	\$5,425			\$5,425	
0002 Net Position - Beginning of Fiscal Year	342,101			342,101	
0003 Accounting Changes / Residual Equity Transfers					
Net Position - End Of Year	\$347,526			\$347,526	

Amounts Expressed in Whole Dollars	<u>Food Service</u> <u>(51)</u>	<u>Child Care Operations</u> <u>(52)</u>	<u>Other Enterprise</u> <u>(58)</u>	<u>TOTAL</u>	<u>Internal Service(60)</u>
Cash Flows From Operating Activities					
0011 Cash Receipts From Users	239,689			239,689	
0012 Cash Receipts From Assessments Made to Other Funds					
0013 Cash Receipts From Earnings on Investments					
0014 Cash Receipts From Other Operating Revenue					
0015 Cash Payments To Employees For Services	465,852			465,852	
0016 Cash Payments For Insurance Claims					
0017 Cash Payments To Suppliers For Goods and Services	279,018			279,018	
0018 Cash Payments For Other Operating Expenses	2,661			2,661	
Net Cash Provided By (Used For) Operating Activities	(\$507,842)			(\$507,842)	
Cash Flows From Non-Capital Financing Activities					
0021 Receipts From Local Sources - 6000					
0022 Receipts From State Sources - 7000	69,593			69,593	
0023 Receipts From Federal Sources -8000	421,083			421,083	
0024 Notes and Loans Received (Repaid)					
0025 Interest Paid on Notes/Loans - 5100-830					
0026 Operating Transfers In (Out)/Residual Equity Trans					
0027 Operating Transfers In (Out) Primary Government / Comp Unit					
0028 Receipts From Refund of Prior Year Expenditures - 6991					
0029 Special and Extraordinary Gains (losses)					
0030 Receipts from Insurance Recoveries -9990					
Net Cash Prov By (Used for) Non-Capital Financing Activities	\$490,676			\$490,676	
Cash Flows From Capital and Related Financing Activities					
0031 Payments For Fac Acq, Const, and Imp - 4000	(132,014)			(132,014)	
0032 Gain / (Loss) on Sale of Fixed Assets - 6930	1,559			1,559	
0033 Proceeds From Extended Term Financing - 9200					
0034 Principal Paid on Financing Agreements					
0035 Interest Paid on Financing Agreements - 5100-830					
0036 (Inc) Dec in Contributed Capital					
Net Cash Prov By (Used for) Capital and Related Financing Activities	(\$130,455)			(\$130,455)	
Cash Flows From Investing Activities					
0041 Earnings on Investments - 6500	81			81	
0042 Purchase of Inv Securities / Deposits to Inv Pools					
0043 Receipts From Investment Pool Withdrawals					
0044 Proceeds from Sale and Maturity of Inv Securities					

LEA : 116191203 Bloomsburg Area SD

Printed 1/3/2020 11:38:04 AM

0045 Loans Received (Paid)

Net Cash Prov By (Used for) Investing Activities	\$81	\$81
---	-------------	-------------

	<u>Food Service</u> <u>(51)</u>	<u>Child Care Operations</u> <u>(52)</u>	<u>Other Enterprise</u> <u>(58)</u>	<u>TOTAL</u>	<u>Internal Service</u> <u>(60)</u>
Net Increase (Decrease) in Cash Flows	(147,540)			(147,540)	
0004 Cash and Cash Equivalents Beginning of Year	248,464			248,464	
Cash and Cash Equivalents at Year End	\$100,924			\$100,924	

Reconciliation of Operating Income (Loss) To Net Cash Provided by (Used For) Operating Activities

0005 Operating Income (Loss) per REP	(538,154)			(538,154)	
Adjustments					
0051 Depreciation and Net Amortization	16,958			16,958	
0052 Provision for Uncollectible Accounts					
0053 Other Adjustments					
Effect of Changes in Assets, Liabilities, Deferred Outflows and Deferred Inflows					
0054 (Inc) Dec In Accounts Receivable (0120-0150)	5,561			5,561	
0055 Advances to Other Funds (0160)					
0056 (Inc) Dec in Inventories (0170)	16			16	
0057 (Inc) Dec in Prepaid Expenses (0180)					
0058 (Inc) Dec in Other Current or Noncurrent Assets	50,199			50,199	
0064 Deferred Outflows (0910)					
0059 Inc (Dec) in Accounts Payable (0400-0450)	60			60	
0060 Inc (Dec) in Accrued Salaries/Benefits (0461)	(41,204)			(41,204)	
0065 Inc (Dec) in Net Pension Liabilities (0570)					
0066 Inc (Dec) in Other Postemp Benefit Oblig (0560)					
0061 Inc (Dec) in Payroll Deductions/Withholding (0462)					
0062 Inc (Dec) in Unearned Revenue (0480)	(1,278)			(1,278)	
0063 Inc (Dec) in Other Current or Noncurrent Liabilities					
0067 Deferred Inflows (0950)					
Total Adjustments	\$30,312			\$30,312	
Cash Provided By (Used for) Total	(\$507,842)			(\$507,842)	

COMBINED STATEMENT OF CASH FLOWS
SCHEDULE OF NONCASH INVESTING, CAPITAL, AND FINANCING ACTIVITIES

Explanation of Transaction and Balance Sheet Effect	Amount
Total	

LEA : 116191203 Bloomsburg Area SD

Printed 1/3/2020 11:38:06 AM

Amounts Expressed in Whole Dollars

	<u>Private Purpose Trust</u> (71)	<u>Investment Trust</u> (72)	<u>Pension Trust</u> (73)	<u>Activity</u> (81)
Assets And Deferred Outflows Of Resources				
Assets				
0100 Cash and Cash Equivalents	289,039			159,138
0110 Investments				
0130 Due From Other Funds				
0147 Due from Component Unit				
0150 Other Receivables				
0170 Inventories				
0180 Prepaid Expenses (Expenditures)				
0190 Other Current Assets				
0220 Buildings and Building Improvements (Net)				
0230 Machinery, Equipment and Furniture (Net)				
Total Assets	\$289,039			\$159,138
0910 Deferred Outflows of Resources				
Total Assets And Deferred Outflows Of Resources	\$289,039			\$159,138

LEA : 116191203 Bloomsburg Area SD

Printed 1/3/2020 11:38:06 AM

Amounts Expressed in Whole Dollars

	<u>Other Agency</u> <u>(89)</u>	<u>Discrete Component Units</u> <u>(98)</u>	<u>Discrete Component Units</u> <u>(99)</u>	<u>Total Fiduciary Funds</u>
Assets And Deferred Outflows Of Resources				
Assets				
0100 Cash and Cash Equivalents				448,177
0110 Investments				
0130 Due From Other Funds				
0147 Due from Component Unit				
0150 Other Receivables				
0170 Inventories				
0180 Prepaid Expenses (Expenditures)				
0190 Other Current Assets				
0220 Buildings and Building Improvements (Net)				
0230 Machinery, Equipment and Furniture (Net)				
Total Assets				\$448,177
0910 Deferred Outflows of Resources				
Total Assets And Deferred Outflows Of Resources				\$448,177

LEA : 116191203 Bloomsburg Area SD

Printed 1/3/2020 11:38:06 AM

Amounts Expressed in Whole Dollars	<u>Private Purpose Trust</u> (71)	<u>Investment Trust</u> (72)	<u>Pension Trust</u> (73)	<u>Activity</u> (81)
Liabilities, Deferred Inflows Of Resources And Net Position				
Liabilities				
0400 Due to Other Funds				
0411 Due to Other Governments				
0412 Due to Primary Government				
0413 Due to Component Unit				
0420 Accounts Payable				159,138
0430 Contracts Payable				
0450 Short-Term Payables				
0461 Accrued Salaries and Benefits				
0462 Payroll Deductions and Withholding				
0480 Unearned Revenues				
0490 Other Current Liabilities				
Total Liabilities				\$159,138
0950 Deferred Inflows of Resources				
Net Position				
0791 Net Investment in Capital Assets				
0009 Restricted Net Position (0792 – 0798)	289,039			
0799 Unrestricted Net Position				
Total Net Position	\$289,039			
Total Liabilities, Deferred Inflows Of Resources And Net Position	\$289,039			\$159,138

LEA : 116191203 Bloomsburg Area SD

Printed 1/3/2020 11:38:06 AM

Amounts Expressed in Whole Dollars	<u>Other Agency</u> (89)	<u>Discrete Component Units</u> (98)	<u>Discrete Component Units</u> (99)	<u>Total Fiduciary Funds</u>
Liabilities, Deferred Inflows Of Resources And Net Position				
Liabilities				
0400 Due to Other Funds				
0411 Due to Other Governments				
0412 Due to Primary Government				
0413 Due to Component Unit				
0420 Accounts Payable				159,138
0430 Contracts Payable				
0450 Short-Term Payables				
0461 Accrued Salaries and Benefits				
0462 Payroll Deductions and Withholding				
0480 Unearned Revenues				
0490 Other Current Liabilities				
Total Liabilities				\$159,138
0950 Deferred Inflows of Resources				
Net Position				
0791 Net Investment in Capital Assets				
0009 Restricted Net Position (0792 – 0798)				289,039
0799 Unrestricted Net Position				
Total Net Position				\$289,039
Total Liabilities, Deferred Inflows Of Resources And Net Position				\$448,177

Amounts Expressed in Whole Dollars	<u>Private Purpose Trust</u> (71)	<u>Investment Trust</u> (72)	<u>Pension Trust</u> (73)	<u>Discrete Component</u> <u>Units</u> (98)	<u>Discrete Component</u> <u>Units</u> (99)	<u>Total Fiduciary</u> <u>Funds</u>
Additions						
0091 Gifts and Contributions	26,857					26,857
0092 Other Additions						
Deductions						
0093 Scholarships Awarded	26,725					26,725
0094 Other Deductions						
Change In Net Position	\$132					\$132
0006 Net Position – Beginning of Fiscal Year	288,907					288,907
0007 Net Position Held in Trust for Pension Benefits						
Net Position - End of Fiscal Year	\$289,039					\$289,039

	<u>Revenue Reported In Current Year</u>	<u>Current Year Tax Accrual</u>	<u>Prior Year Tax Accrual</u>	<u>Taxes Collected In Current Year</u>
<u>Revenue from Local Sources</u>				
6111 Current Real Estate Taxes	10,202,052.85			10,202,052.85
6112 Interim Real Estate Taxes	16,082.24			16,082.24
6113 Public Utility Realty Taxes	13,725.99			13,725.99
6114 Payments in Lieu of Current Taxes - State / Local	120,127.22			120,127.22
6143 Current Act 511 Local Services Taxes	52,214.33			52,214.33
6151 Current Act 511 Earned Income Taxes	3,225,836.84			3,225,836.84
6153 Current Act 511 Real Estate Transfer Taxes	384,846.94			384,846.94
6411 Delinquent Real Estate Taxes	472,856.11			472,856.11
6420 Delinquent Per Capita Taxes, Section 679	958.11			958.11
6440 Delinquent Local Enabling Taxes - Flat Rate Assessments	958.09			958.09
6500 Earnings on Investments	374,048.14			
6700 Revenues from LEA Activities	44,439.71			
6832 Federal IDEA Revenue Received as Pass Through	241,235.91			
6910 Rentals	17,993.75			
6920 Contributions and Donations from Private Sources	9,798.60			
6941 Regular Day School Tuition	9,359.16			
6942 Summer School Tuition	340.00			
6944 Receipts from Other LEAs in Pennsylvania - Education	17,668.22			
6991 Refunds of a Prior Year Expenditure	25,716.57			
6992 Energy Efficiency Revenues and Incentives	33,973.59			
6999 Other Revenues Not Specified Above	26,440.90			
TOTAL Revenue from Local Sources	\$15,290,673.27			\$14,489,658.72

**Revenue Reported
In Current Year**

Revenue from State Sources

7110 Basic Education Funding	5,857,730.76		
7160 Tuition for Orphans Subsidy	94,116.61		
7240 Driver Education - Student	1,680.00		
7271 Special Education funds for School-Aged Pupils	993,320.31		
7311 Pupil Transportation Subsidy	375,005.13		
7312 Nonpublic and Charter School Pupil Transportation Subsidy	25,025.00		
7320 Rental and Sinking Fund Payments / Building Reimbursement Subsidy	336,614.95		
7330 Health Services (Medical, Dental, Nurse, Act 25)	31,847.17		
7340 State Property Tax Reduction Allocation	487,152.26		
7361 School Safety and Security Grants	25,000.00		
7505 Ready to Learn Block Grant	234,078.00		
7810 State Share of Social Security and Medicare Taxes	361,409.21		
7820 State Share of Retirement Contributions	1,737,856.25		
TOTAL Revenue from State Sources	\$10,560,835.65		

**Revenue Reported
In Current Year**

Revenue from Federal Sources

8390 Other Restricted Federal Grants-in-Aid Directly from the Federal Government	118,926.89		
8514 NCLB, Title I - Improving the Academic Achievement of the Disadvantaged	415,632.00		
8515 NCLB, Title II - Preparing, Training and Recruiting High Quality Teachers and Principals	68,805.56		
8517 NCLB, Title IV - 21St Century Schools	26,314.98		
8810 School-Based Access Medicaid Reimbursement Program (SBAP) Reimbursements (Access)	50,000.00		
8820 Medical Assistance Reimbursement for Administrative Claiming (Quarterly) Program	31,832.03		
TOTAL Revenue from Federal Sources	\$711,511.46		

Revenue Reported
In Current Year

Other Financing Sources

9400 Sale of or Compensation for Loss of Fixed Assets	17,657.00		
TOTAL Other Financing Sources	\$17,657.00		
TOTAL FROM ALL SOURCES	\$26,580,677.38		\$14,489,658.72

Revenue from Local Sources	15,290,673.27
Revenue from State Sources	10,560,835.65
Revenue from Federal Sources	711,511.46
Other Financing Sources	17,657.00
TOTAL FROM ALL SOURCES	\$26,580,677.38

General Fund (10)

	<u>Total</u>
1000 Instruction	
100 Personnel Services – Salaries	
100 Personnel Services – Salaries	7,628,125.58
Total Personnel Services – Salaries	\$7,628,125.58
200 Personnel Services – Employee Benefits	
210 Group Insurance – Contracted Provider	1,938,731.20
220 Social Security Contributions	571,247.67
230 PSERS Retirement Contributions	2,510,690.83
250 Unemployment Compensation	1,142.41
260 Workers' Compensation	97,063.00
Total Personnel Services – Employee Benefits	\$5,118,875.11
300 Purchased Professional and Technical Services	
322 Professional Educational Services – Ius	351,336.36
329 Professional Educational Services – Other	35.00
330 Other Professional Services	51,088.88
Total Purchased Professional and Technical Services	\$402,460.24
400 Purchased Property Services	
430 Repairs and Maintenance Services	11,179.10
440 Rentals	32,782.44
Total Purchased Property Services	\$43,961.54
500 Other Purchased Services	
510 Student Transportation Services	24,335.63
530 Communications	(51.17)
550 Printing and Binding	2,515.98
561 Tuition To Other School Districts Within the State	285,403.36
562 Tuition To Pennsylvania Charter Schools	547,562.02
564 Tuition To Career and Technology Centers	959,739.12
568 Tuition To Private Residential Rehabilitative Institutions (PRRI) [In-State] and Detention Centers	22,559.94
569 Tuition – Other	285,758.00
580 Travel	7,262.61
594 IU Payment By Withholding for Institutionalized Children's Programs – Special Classes	6,291.74
599 Other Miscellaneous Purchased Services	300.00
Total Other Purchased Services	\$2,141,677.23
600 Supplies	
610 General Supplies	208,529.04
620 Energy	353.85
630 Food	773.77
640 Books and Periodicals	23,995.96
650 Supplies & Fees – Technology Related	69,549.32
Total Supplies	\$303,201.94
700 Property	
752 Capital Equipment – Original and Additional	45,707.94
Total Property	\$45,707.94

General Fund (10)

1000 Instruction	<u>Total</u>
800 <u>Other Objects</u>	
810 Dues and Fees	4,663.25
890 Miscellaneous Expenditures	12,186.48
Total Other Objects	\$16,849.73
Total 1000 Instruction	\$15,700,859.31

LEA : 116191203 Bloomsburg Area SD

Printed 1/3/2020 11:38:16 AM

Page - 3 of 23

General Fund (10)**1100 Regular Programs – Elementary / Secondary**

	<u>Elementary</u>	<u>Secondary</u>	<u>Federal</u>	<u>Total</u>
100 Personnel Services – Salaries				
100 Personnel Services – Salaries	3,460,898.75	2,438,693.48	267,942.99	6,167,535.22
Total Personnel Services – Salaries	\$3,460,898.75	\$2,438,693.48	\$267,942.99	\$6,167,535.22
200 Personnel Services – Employee Benefits				
210 Group Insurance – Contracted Provider	832,174.07	592,970.39	125,100.06	1,550,244.52
220 Social Security Contributions	263,026.14	180,889.16	14,067.61	457,982.91
230 PSERS Retirement Contributions	1,152,974.39	814,019.39	63,643.34	2,030,637.12
250 Unemployment Compensation	536.93	605.48		1,142.41
260 Workers' Compensation	45,619.61	51,443.39		97,063.00
Total Personnel Services – Employee Benefits	\$2,294,331.14	\$1,639,927.81	\$202,811.01	\$4,137,069.96
300 Purchased Professional and Technical Services				
322 Professional Educational Services – lus	4,010.82	7,686.54	1,446.00	13,143.36
Total Purchased Professional and Technical Services	\$4,010.82	\$7,686.54	\$1,446.00	\$13,143.36
400 Purchased Property Services				
430 Repairs and Maintenance Services	1,954.45	8,655.04		10,609.49
440 Rentals	23,469.13	9,313.31		32,782.44
Total Purchased Property Services	\$25,423.58	\$17,968.35		\$43,391.93
500 Other Purchased Services				
510 Student Transportation Services	20,336.69	3,279.56		23,616.25
550 Printing and Binding	832.98	1,683.00		2,515.98
562 Tuition To Pennsylvania Charter Schools	90,462.27	336,026.10		426,488.37
568 Tuition To Private Residential Rehabilitative Institutions (PRRI) [In-State] and Detention Centers	7,054.40	8,458.16		15,512.56
580 Travel	1,039.31	1,272.81		2,312.12
599 Other Miscellaneous Purchased Services	99.00	201.00		300.00
Total Other Purchased Services	\$119,824.65	\$350,920.63		\$470,745.28
600 Supplies				
610 General Supplies	105,237.26	57,858.61	18,744.22	181,840.09
630 Food	394.27	318.50		712.77
640 Books and Periodicals	11,660.14	11,384.24		23,044.38
650 Supplies & Fees – Technology Related	39,354.22	27,378.09		66,732.31
Total Supplies	\$156,645.89	\$96,939.44	\$18,744.22	\$272,329.55
700 Property				
752 Capital Equipment – Original and Additional	15,795.65	3,834.98		19,630.63
Total Property	\$15,795.65	\$3,834.98		\$19,630.63
800 Other Objects				
810 Dues and Fees	769.30	3,058.95		3,828.25
890 Miscellaneous Expenditures	8,635.46	2,858.00		11,493.46
Total Other Objects	\$9,404.76	\$5,916.95		\$15,321.71
Total 1100 Regular Programs – Elementary / Secondary	\$6,086,335.24	\$4,561,888.18	\$490,944.22	\$11,139,167.64

General Fund (10)

	<u>Elementary</u>	<u>Secondary</u>	<u>Federal</u>	<u>Total</u>
1110 Regular Programs				
100 Personnel Services – Salaries				
100 Personnel Services – Salaries	3,460,898.75	2,438,693.48		5,899,592.23
Total Personnel Services – Salaries	\$3,460,898.75	\$2,438,693.48		\$5,899,592.23
200 Personnel Services – Employee Benefits				
210 Group Insurance – Contracted Provider	832,174.07	592,970.39		1,425,144.46
220 Social Security Contributions	263,026.14	180,889.16		443,915.30
230 PSERS Retirement Contributions	1,152,974.39	814,019.39		1,966,993.78
250 Unemployment Compensation	536.93	605.48		1,142.41
260 Workers' Compensation	45,619.61	51,443.39		97,063.00
Total Personnel Services – Employee Benefits	\$2,294,331.14	\$1,639,927.81		\$3,934,258.95
300 Purchased Professional and Technical Services				
322 Professional Educational Services – lus	4,010.82	7,686.54		11,697.36
Total Purchased Professional and Technical Services	\$4,010.82	\$7,686.54		\$11,697.36
400 Purchased Property Services				
430 Repairs and Maintenance Services	1,954.45	8,655.04		10,609.49
440 Rentals	23,469.13	9,313.31		32,782.44
Total Purchased Property Services	\$25,423.58	\$17,968.35		\$43,391.93
500 Other Purchased Services				
510 Student Transportation Services	20,336.69	3,279.56		23,616.25
550 Printing and Binding	832.98	1,683.00		2,515.98
562 Tuition To Pennsylvania Charter Schools	90,462.27	336,026.10		426,488.37
568 Tuition To Private Residential Rehabilitative Institutions (PRRI) [In-State] and Detention Centers	7,054.40	8,458.16		15,512.56
580 Travel	1,039.31	1,272.81		2,312.12
599 Other Miscellaneous Purchased Services	99.00	201.00		300.00
Total Other Purchased Services	\$119,824.65	\$350,920.63		\$470,745.28
600 Supplies				
610 General Supplies	105,237.26	57,858.61	18,744.22	181,840.09
630 Food	394.27	318.50		712.77
640 Books and Periodicals	11,660.14	11,384.24		23,044.38
650 Supplies & Fees – Technology Related	39,354.22	27,378.09		66,732.31
Total Supplies	\$156,645.89	\$96,939.44	\$18,744.22	\$272,329.55
700 Property				
752 Capital Equipment – Original and Additional	15,795.65	3,834.98		19,630.63
Total Property	\$15,795.65	\$3,834.98		\$19,630.63
800 Other Objects				
810 Dues and Fees	769.30	3,058.95		3,828.25
890 Miscellaneous Expenditures	8,635.46	2,858.00		11,493.46
Total Other Objects	\$9,404.76	\$5,916.95		\$15,321.71
Total 1110 Regular Programs	\$6,086,335.24	\$4,561,888.18	\$18,744.22	\$10,666,967.64

General Fund (10)

1190 Federally-Funded Regular Programs

Elementary

Secondary

Federal

Total

100 Personnel Services – Salaries

100 Personnel Services – Salaries

267,942.99

267,942.99

Total Personnel Services – Salaries

\$267,942.99

\$267,942.99

200 Personnel Services – Employee Benefits

210 Group Insurance – Contracted Provider

125,100.06

125,100.06

220 Social Security Contributions

14,067.61

14,067.61

230 PSERS Retirement Contributions

63,643.34

63,643.34

Total Personnel Services – Employee Benefits

\$202,811.01

\$202,811.01

300 Purchased Professional and Technical Services

322 Professional Educational Services – Ius

1,446.00

1,446.00

Total Purchased Professional and Technical Services

\$1,446.00

\$1,446.00

Total 1190 Federally-Funded Regular Programs

\$472,200.00

\$472,200.00

General Fund (10)

1200 Special Programs – Elementary / Secondary	<u>Elementary</u>	<u>Secondary</u>	<u>Federal</u>	<u>Total</u>
100 Personnel Services – Salaries				
100 Personnel Services – Salaries	573,883.81	344,412.11	185,124.10	1,103,420.02
Total Personnel Services – Salaries	\$573,883.81	\$344,412.11	\$185,124.10	\$1,103,420.02
200 Personnel Services – Employee Benefits				
210 Group Insurance – Contracted Provider	138,983.41	76,875.97	93,394.36	309,253.74
220 Social Security Contributions	45,649.21	28,199.57	8,320.52	82,169.30
230 PSERS Retirement Contributions	202,316.72	125,629.89	37,856.84	365,803.45
Total Personnel Services – Employee Benefits	\$386,949.34	\$230,705.43	\$139,571.72	\$757,226.49
300 Purchased Professional and Technical Services				
322 Professional Educational Services – Ius	54,735.89	261,347.99		316,083.88
329 Professional Educational Services – Other		35.00		35.00
330 Other Professional Services	1,787.96	1,145.92	48,155.00	51,088.88
Total Purchased Professional and Technical Services	\$56,523.85	\$262,528.91	\$48,155.00	\$367,207.76
500 Other Purchased Services				
510 Student Transportation Services	242.73	476.65		719.38
561 Tuition To Other School Districts Within the State	176,616.92	59,673.83		236,290.75
562 Tuition To Pennsylvania Charter Schools	9,850.74	111,222.91		121,073.65
568 Tuition To Private Residential Rehabilitative Institutions (PRRI) [In-State] and Detention Centers		6,007.38		6,007.38
569 Tuition – Other	98,868.55	185,409.45		284,278.00
580 Travel	2,093.21	254.39		2,347.60
594 IU Payment By Withholding for Institutionalized Children’s Programs – Special Classes	2,957.12	3,334.62		6,291.74
Total Other Purchased Services	\$290,629.27	\$366,379.23		\$657,008.50
600 Supplies				
610 General Supplies	8,059.97	5,630.47		13,690.44
630 Food	36.00	25.00		61.00
640 Books and Periodicals	96.82	443.41		540.23
650 Supplies & Fees – Technology Related	563.19	2,253.82		2,817.01
Total Supplies	\$8,755.98	\$8,352.70		\$17,108.68
800 Other Objects				
810 Dues and Fees	563.04	171.96		735.00
890 Miscellaneous Expenditures	589.17	103.85		693.02
Total Other Objects	\$1,152.21	\$275.81		\$1,428.02
Total 1200 Special Programs – Elementary / Secondary	\$1,317,894.46	\$1,212,654.19	\$372,850.82	\$2,903,399.47

General Fund (10)

1210 Life Skills Support

	<u>Elementary</u>	<u>Secondary</u>	<u>Federal</u>	<u>Total</u>
100 Personnel Services – Salaries				
100 Personnel Services – Salaries	42,315.25	78,095.22	72,175.46	192,585.93
Total Personnel Services – Salaries	\$42,315.25	\$78,095.22	\$72,175.46	\$192,585.93
200 Personnel Services – Employee Benefits				
210 Group Insurance – Contracted Provider	4,370.85	11,708.20	25,628.75	41,707.80
220 Social Security Contributions	4,095.29	7,540.66	2,541.16	14,177.11
230 PSERS Retirement Contributions	18,507.39	34,311.30	11,562.66	64,381.35
Total Personnel Services – Employee Benefits	\$26,973.53	\$53,560.16	\$39,732.57	\$120,266.26
300 Purchased Professional and Technical Services				
322 Professional Educational Services – lus		37,765.00		37,765.00
Total Purchased Professional and Technical Services		\$37,765.00		\$37,765.00
500 Other Purchased Services				
510 Student Transportation Services	242.73	476.65		719.38
561 Tuition To Other School Districts Within the State		34,380.00		34,380.00
580 Travel		27.04		27.04
Total Other Purchased Services	\$242.73	\$34,883.69		\$35,126.42
600 Supplies				
610 General Supplies	787.78	2,787.54		3,575.32
640 Books and Periodicals	80.32	163.07		243.39
650 Supplies & Fees – Technology Related	224.73	633.82		858.55
Total Supplies	\$1,092.83	\$3,584.43		\$4,677.26
800 Other Objects				
890 Miscellaneous Expenditures	538.02			538.02
Total Other Objects	\$538.02			\$538.02
Total 1210 Life Skills Support	\$71,162.36	\$207,888.50	\$111,908.03	\$390,958.89

General Fund (10)

	<u>Elementary</u>	<u>Secondary</u>	<u>Federal</u>	<u>Total</u>
1220 Sensory Support				
100 Personnel Services – Salaries				
100 Personnel Services – Salaries	90,010.44	26,129.56		116,140.00
Total Personnel Services – Salaries	\$90,010.44	\$26,129.56		\$116,140.00
200 Personnel Services – Employee Benefits				
210 Group Insurance – Contracted Provider	22,702.66	4,617.04		27,319.70
220 Social Security Contributions	6,725.56	1,966.90		8,692.46
230 PSERS Retirement Contributions	30,090.54	8,735.17		38,825.71
Total Personnel Services – Employee Benefits	\$59,518.76	\$15,319.11		\$74,837.87
300 Purchased Professional and Technical Services				
322 Professional Educational Services – Ius	12,782.41	6,975.09		19,757.50
330 Other Professional Services	1,348.63	867.75		2,216.38
Total Purchased Professional and Technical Services	\$14,131.04	\$7,842.84		\$21,973.88
500 Other Purchased Services				
580 Travel	550.63	87.48		638.11
Total Other Purchased Services	\$550.63	\$87.48		\$638.11
600 Supplies				
610 General Supplies	2,287.48	1,048.54		3,336.02
Total Supplies	\$2,287.48	\$1,048.54		\$3,336.02
800 Other Objects				
810 Dues and Fees	433.04	171.96		605.00
Total Other Objects	\$433.04	\$171.96		\$605.00
Total 1220 Sensory Support	\$166,931.39	\$50,599.49		\$217,530.88

General Fund (10)

	<u>Elementary</u>	<u>Secondary</u>	<u>Federal</u>	<u>Total</u>
1230 Emotional Support				
100 Personnel Services – Salaries				
100 Personnel Services – Salaries	75,400.97		69,595.88	144,996.85
Total Personnel Services – Salaries	\$75,400.97		\$69,595.88	\$144,996.85
200 Personnel Services – Employee Benefits				
210 Group Insurance – Contracted Provider	23,736.49		25,468.30	49,204.79
220 Social Security Contributions	6,564.36		4,220.05	10,784.41
230 PSERS Retirement Contributions	29,424.76		19,047.76	48,472.52
Total Personnel Services – Employee Benefits	\$59,725.61		\$48,736.11	\$108,461.72
300 Purchased Professional and Technical Services				
322 Professional Educational Services – Ius	23,121.00	201,591.50		224,712.50
Total Purchased Professional and Technical Services	\$23,121.00	\$201,591.50		\$224,712.50
500 Other Purchased Services				
561 Tuition To Other School Districts Within the State	176,616.92	25,293.83		201,910.75
568 Tuition To Private Residential Rehabilitative Institutions (PRRI) [In-State] and Detention Centers		6,007.38		6,007.38
569 Tuition – Other	98,868.55	185,241.45		284,110.00
580 Travel	697.04			697.04
Total Other Purchased Services	\$276,182.51	\$216,542.66		\$492,725.17
600 Supplies				
610 General Supplies	472.44	1,105.88		1,578.32
Total Supplies	\$472.44	\$1,105.88		\$1,578.32
Total 1230 Emotional Support	\$434,902.53	\$419,240.04	\$118,331.99	\$972,474.56

General Fund (10)

1240 Academic Support

	<u>Elementary</u>	<u>Secondary</u>	<u>Federal</u>	<u>Total</u>
100 Personnel Services – Salaries				
100 Personnel Services – Salaries	366,157.15	240,187.33	43,352.76	649,697.24
Total Personnel Services – Salaries	\$366,157.15	\$240,187.33	\$43,352.76	\$649,697.24
200 Personnel Services – Employee Benefits				
210 Group Insurance – Contracted Provider	88,173.41	60,550.73	42,297.31	191,021.45
220 Social Security Contributions	28,264.00	18,692.01	1,559.31	48,515.32
230 PSERS Retirement Contributions	124,294.03	82,583.42	7,246.42	214,123.87
Total Personnel Services – Employee Benefits	\$240,731.44	\$161,826.16	\$51,103.04	\$453,660.64
300 Purchased Professional and Technical Services				
322 Professional Educational Services – Ius	39.60	80.40		120.00
329 Professional Educational Services – Other		35.00		35.00
Total Purchased Professional and Technical Services	\$39.60	\$115.40		\$155.00
500 Other Purchased Services				
562 Tuition To Pennsylvania Charter Schools	9,850.74	111,222.91		121,073.65
569 Tuition – Other		168.00		168.00
580 Travel	845.54	139.87		985.41
Total Other Purchased Services	\$10,696.28	\$111,530.78		\$122,227.06
600 Supplies				
610 General Supplies	3,981.68	688.51		4,670.19
630 Food	36.00	25.00		61.00
640 Books and Periodicals	16.50	280.34		296.84
650 Supplies & Fees – Technology Related	338.46	1,620.00		1,958.46
Total Supplies	\$4,372.64	\$2,613.85		\$6,986.49
800 Other Objects				
810 Dues and Fees	130.00			130.00
890 Miscellaneous Expenditures	51.15	103.85		155.00
Total Other Objects	\$181.15	\$103.85		\$285.00
Total 1240 Academic Support	\$622,178.26	\$516,377.37	\$94,455.80	\$1,233,011.43

General Fund (10)

	<u>Elementary</u>	<u>Secondary</u>	<u>Federal</u>	<u>Total</u>
1241 Learning Support – Public				
100 Personnel Services – Salaries				
100 Personnel Services – Salaries	306,679.15	240,187.33	43,352.76	590,219.24
Total Personnel Services – Salaries	\$306,679.15	\$240,187.33	\$43,352.76	\$590,219.24
200 Personnel Services – Employee Benefits				
210 Group Insurance – Contracted Provider	88,111.41	60,550.73	42,297.31	190,959.45
220 Social Security Contributions	23,714.08	18,692.01	1,559.31	43,965.40
230 PSERS Retirement Contributions	105,246.23	82,583.42	7,246.42	195,076.07
Total Personnel Services – Employee Benefits	\$217,071.72	\$161,826.16	\$51,103.04	\$430,000.92
300 Purchased Professional and Technical Services				
322 Professional Educational Services – lus	39.60	80.40		120.00
329 Professional Educational Services – Other		35.00		35.00
Total Purchased Professional and Technical Services	\$39.60	\$115.40		\$155.00
500 Other Purchased Services				
562 Tuition To Pennsylvania Charter Schools	9,850.74	111,222.91		121,073.65
569 Tuition – Other		168.00		168.00
580 Travel		5.60		5.60
Total Other Purchased Services	\$9,850.74	\$111,396.51		\$121,247.25
600 Supplies				
610 General Supplies	3,950.33	624.87		4,575.20
630 Food	36.00	25.00		61.00
640 Books and Periodicals		246.84		246.84
650 Supplies & Fees – Technology Related	338.46	1,620.00		1,958.46
Total Supplies	\$4,324.79	\$2,516.71		\$6,841.50
800 Other Objects				
810 Dues and Fees	130.00			130.00
Total Other Objects	\$130.00			\$130.00
Total 1241 Learning Support – Public	\$538,096.00	\$516,042.11	\$94,455.80	\$1,148,593.91

General Fund (10)

1243 Gifted Support

100 Personnel Services – Salaries

	<u>Elementary</u>	<u>Secondary</u>	<u>Federal</u>	<u>Total</u>
100 Personnel Services – Salaries	59,478.00			59,478.00
Total Personnel Services – Salaries	\$59,478.00			\$59,478.00

200 Personnel Services – Employee Benefits

210 Group Insurance – Contracted Provider	62.00			62.00
220 Social Security Contributions	4,549.92			4,549.92
230 PSERS Retirement Contributions	19,047.80			19,047.80
Total Personnel Services – Employee Benefits	\$23,659.72			\$23,659.72

500 Other Purchased Services

580 Travel	845.54	134.27		979.81
Total Other Purchased Services	\$845.54	\$134.27		\$979.81

600 Supplies

610 General Supplies	31.35	63.64		94.99
640 Books and Periodicals	16.50	33.50		50.00
Total Supplies	\$47.85	\$97.14		\$144.99

800 Other Objects

890 Miscellaneous Expenditures	51.15	103.85		155.00
Total Other Objects	\$51.15	\$103.85		\$155.00

Total 1243 Gifted Support	\$84,082.26	\$335.26		\$84,417.52
----------------------------------	--------------------	-----------------	--	--------------------

General Fund (10)

1260 Physical Support

300 Purchased Professional and Technical Services

	<u>Elementary</u>	<u>Secondary</u>	<u>Federal</u>	<u>Total</u>
330 Other Professional Services	439.33	278.17	48,155.00	48,872.50
Total Purchased Professional and Technical Services	\$439.33	\$278.17	\$48,155.00	\$48,872.50

600 Supplies

610 General Supplies	530.59			530.59
Total Supplies	\$530.59			\$530.59
Total 1260 Physical Support	\$969.92	\$278.17	\$48,155.00	\$49,403.09

General Fund (10)

1280 Early Intervention Support

300 Purchased Professional and Technical Services

322 Professional Educational Services – lus

Total Purchased Professional and Technical Services

Total 1280 Early Intervention Support

Elementary

Secondary

Federal

Total

18,792.88

18,792.88

\$18,792.88

\$18,792.88

\$18,792.88

\$18,792.88

General Fund (10)

	<u>Elementary</u>	<u>Secondary</u>	<u>Federal</u>	<u>Total</u>
1290 Special Programs - Other Support				
300 <u>Purchased Professional and Technical Services</u>				
322 Professional Educational Services – Ius		14,936.00		14,936.00
Total Purchased Professional and Technical Services		\$14,936.00		\$14,936.00
500 <u>Other Purchased Services</u>				
594 IU Payment By Withholding for Institutionalized Children’s Programs – Special Classes	2,957.12	3,334.62		6,291.74
Total Other Purchased Services	\$2,957.12	\$3,334.62		\$6,291.74
Total 1290 Special Programs - Other Support	\$2,957.12	\$18,270.62		\$21,227.74

General Fund (10)

1300 Vocational Education

100 Personnel Services – Salaries

	<u>Elementary</u>	<u>Secondary</u>	<u>Federal</u>	<u>Total</u>
100 Personnel Services – Salaries		294,808.00		294,808.00
Total Personnel Services – Salaries		\$294,808.00		\$294,808.00

200 Personnel Services – Employee Benefits

210 Group Insurance – Contracted Provider		65,350.10		65,350.10
220 Social Security Contributions		26,432.03		26,432.03
230 PSERS Retirement Contributions		93,402.58		93,402.58
Total Personnel Services – Employee Benefits		\$185,184.71		\$185,184.71

500 Other Purchased Services

530 Communications		(51.17)		(51.17)
564 Tuition To Career and Technology Centers		959,739.12		959,739.12
580 Travel		2,602.89		2,602.89
Total Other Purchased Services		\$962,290.84		\$962,290.84

600 Supplies

610 General Supplies		12,264.51	734.00	12,998.51
640 Books and Periodicals		411.35		411.35
Total Supplies		\$12,675.86	\$734.00	\$13,409.86

700 Property

752 Capital Equipment – Original and Additional			10,930.00	10,930.00
Total Property			\$10,930.00	\$10,930.00

800 Other Objects

810 Dues and Fees		100.00		100.00
Total Other Objects		\$100.00		\$100.00

Total 1300 Vocational Education

		\$1,455,059.41	\$11,664.00	\$1,466,723.41
--	--	-----------------------	--------------------	-----------------------

General Fund (10)

	<u>Elementary</u>	<u>Secondary</u>	<u>Federal</u>	<u>Total</u>
1400 Other Instructional Programs – Elementary / Secondary				
100 Personnel Services – Salaries				
100 Personnel Services – Salaries	827.19	61,535.15		62,362.34
Total Personnel Services – Salaries	\$827.19	\$61,535.15		\$62,362.34
200 Personnel Services – Employee Benefits				
210 Group Insurance – Contracted Provider		13,882.84		13,882.84
220 Social Security Contributions	62.84	4,600.59		4,663.43
230 PSERS Retirement Contributions	276.52	20,571.16		20,847.68
Total Personnel Services – Employee Benefits	\$339.36	\$39,054.59		\$39,393.95
300 Purchased Professional and Technical Services				
322 Professional Educational Services – Ius		9,070.76		9,070.76
Total Purchased Professional and Technical Services		\$9,070.76		\$9,070.76
400 Purchased Property Services				
430 Repairs and Maintenance Services		569.61		569.61
Total Purchased Property Services		\$569.61		\$569.61
500 Other Purchased Services				
561 Tuition To Other School Districts Within the State	4,152.03	44,960.58		49,112.61
568 Tuition To Private Residential Rehabilitative Institutions (PRRI) [In-State] and Detention Centers		1,040.00		1,040.00
569 Tuition – Other	184.80	1,295.20		1,480.00
Total Other Purchased Services	\$4,336.83	\$47,295.78		\$51,632.61
600 Supplies				
620 Energy		353.85		353.85
Total Supplies		\$353.85		\$353.85
700 Property				
752 Capital Equipment – Original and Additional		15,147.31		15,147.31
Total Property		\$15,147.31		\$15,147.31
Total 1400 Other Instructional Programs – Elementary / Secondary	\$5,503.38	\$173,027.05		\$178,530.43

General Fund (10)

1410 Drivers' Education

100 Personnel Services – Salaries

	<u>Elementary</u>	<u>Secondary</u>	<u>Federal</u>	<u>Total</u>
100 Personnel Services – Salaries		57,756.34		57,756.34
Total Personnel Services – Salaries		\$57,756.34		\$57,756.34

200 Personnel Services – Employee Benefits

210 Group Insurance – Contracted Provider		13,882.84		13,882.84
220 Social Security Contributions		4,317.89		4,317.89
230 PSERS Retirement Contributions		19,307.96		19,307.96
Total Personnel Services – Employee Benefits		\$37,508.69		\$37,508.69

400 Purchased Property Services

430 Repairs and Maintenance Services		569.61		569.61
Total Purchased Property Services		\$569.61		\$569.61

600 Supplies

620 Energy		353.85		353.85
Total Supplies		\$353.85		\$353.85

700 Property

752 Capital Equipment – Original and Additional		15,147.31		15,147.31
Total Property		\$15,147.31		\$15,147.31

Total 1410 Drivers' Education		\$111,335.80		\$111,335.80
--------------------------------------	--	---------------------	--	---------------------

General Fund (10)

	<u>Elementary</u>	<u>Secondary</u>	<u>Federal</u>	<u>Total</u>
1430 Homebound Instruction				
100 Personnel Services – Salaries				
100 Personnel Services – Salaries	827.19	3,778.81		4,606.00
Total Personnel Services – Salaries	\$827.19	\$3,778.81		\$4,606.00
200 Personnel Services – Employee Benefits				
220 Social Security Contributions	62.84	282.70		345.54
230 PSERS Retirement Contributions	276.52	1,263.20		1,539.72
Total Personnel Services – Employee Benefits	\$339.36	\$1,545.90		\$1,885.26
Total 1430 Homebound Instruction	\$1,166.55	\$5,324.71		\$6,491.26

General Fund (10)

	<u>Elementary</u>	<u>Secondary</u>	<u>Federal</u>	<u>Total</u>
1440 Alternative Regular Education Programs				
300 <u>Purchased Professional and Technical Services</u>				
322 Professional Educational Services – lus		9,070.76		9,070.76
Total Purchased Professional and Technical Services		\$9,070.76		\$9,070.76
500 <u>Other Purchased Services</u>				
561 Tuition To Other School Districts Within the State	4,152.03	44,960.58		49,112.61
568 Tuition To Private Residential Rehabilitative Institutions (PRRI) [In-State] and Detention Centers		1,040.00		1,040.00
569 Tuition – Other	184.80	1,295.20		1,480.00
Total Other Purchased Services	\$4,336.83	\$47,295.78		\$51,632.61
Total 1440 Alternative Regular Education Programs	\$4,336.83	\$56,366.54		\$60,703.37

General Fund (10)

	<u>Elementary</u>	<u>Secondary</u>	<u>Federal</u>	<u>Total</u>
1441 Adjudicated / Court-Placed Programs				
300 <u>Purchased Professional and Technical Services</u>				
322 Professional Educational Services – lus		7,794.58		7,794.58
Total Purchased Professional and Technical Services		\$7,794.58		\$7,794.58
500 <u>Other Purchased Services</u>				
561 Tuition To Other School Districts Within the State	4,152.03	4,682.08		8,834.11
Total Other Purchased Services	\$4,152.03	\$4,682.08		\$8,834.11
Total 1441 Adjudicated / Court-Placed Programs	\$4,152.03	\$12,476.66		\$16,628.69

General Fund (10)

	<u>Elementary</u>	<u>Secondary</u>	<u>Federal</u>	<u>Total</u>
1442 Alternative Education Programs				
300 <u>Purchased Professional and Technical Services</u>				
322 Professional Educational Services – Ius		1,276.18		1,276.18
Total Purchased Professional and Technical Services		\$1,276.18		\$1,276.18
500 <u>Other Purchased Services</u>				
561 Tuition To Other School Districts Within the State		40,278.50		40,278.50
568 Tuition To Private Residential Rehabilitative Institutions (PRRI) [In-State] and Detention Centers		1,040.00		1,040.00
569 Tuition – Other	184.80	1,295.20		1,480.00
Total Other Purchased Services	\$184.80	\$42,613.70		\$42,798.50
Total 1442 Alternative Education Programs	\$184.80	\$43,889.88		\$44,074.68

General Fund (10)

1500 Nonpublic School Programs

Elementary

Secondary

Federal

Total

300 Purchased Professional and Technical Services

322 Professional Educational Services – lus

13,038.36

13,038.36

Total Purchased Professional and Technical Services

\$13,038.36

\$13,038.36

Total 1500 Nonpublic School Programs

\$13,038.36

\$13,038.36

General Fund (10)

2000 Support Services

Total

100 Personnel Services – Salaries

100 Personnel Services – Salaries 2,799,061.42

Total Personnel Services – Salaries \$2,799,061.42

200 Personnel Services – Employee Benefits

210 Group Insurance – Contracted Provider 886,048.39

220 Social Security Contributions 205,778.81

230 PSERS Retirement Contributions 910,240.62

240 Tuition Reimbursement 63,785.10

Total Personnel Services – Employee Benefits \$2,065,852.92

300 Purchased Professional and Technical Services

329 Professional Educational Services – Other 4,736.00

330 Other Professional Services 391,030.45

Total Purchased Professional and Technical Services \$395,766.45

400 Purchased Property Services

410 Cleaning Services 59,115.33

420 Utility Services 59,803.64

430 Repairs and Maintenance Services 199,786.20

440 Rentals 29,196.55

460 Extermination Services 6,444.00

490 Other Purchased Property Services 723.90

Total Purchased Property Services \$355,069.62

500 Other Purchased Services

513 Contracted Carriers 1,052,322.91

516 Student Transportation Services From the IU 1,522.08

520 Insurance – General 278.75

523 General Property and Liability Insurance 95,032.00

530 Communications 82,247.34

549 Other Advertising/Public Relations 28,103.44

550 Printing and Binding 14,994.19

580 Travel 11,968.29

Total Other Purchased Services \$1,286,469.00

600 Supplies

610 General Supplies 374,433.36

620 Energy 415,440.12

630 Food 10,797.59

640 Books and Periodicals 18,721.20

650 Supplies & Fees – Technology Related 245,488.63

Total Supplies \$1,064,880.90

700 Property

752 Capital Equipment – Original and Additional 521,126.05

Total Property \$521,126.05

General Fund (10)

2000 Support Services

Total

800 Other Objects

810 Dues and Fees

12,523.10

890 Miscellaneous Expenditures

2,081.00

Total Other Objects

\$14,604.10

Total 2000 Support Services

\$8,502,830.46

General Fund (10)

	<u>Elementary</u>	<u>Secondary</u>	<u>Federal</u>	<u>Total</u>
2100 Support Services – Students				
100 Personnel Services – Salaries				
100 Personnel Services – Salaries	245,422.03	253,649.30		499,071.33
Total Personnel Services – Salaries	\$245,422.03	\$253,649.30		\$499,071.33
200 Personnel Services – Employee Benefits				
210 Group Insurance – Contracted Provider	59,845.82	47,789.00		107,634.82
220 Social Security Contributions	18,346.97	19,059.08		37,406.05
230 PSERS Retirement Contributions	82,010.64	84,792.80		166,803.44
Total Personnel Services – Employee Benefits	\$160,203.43	\$151,640.88		\$311,844.31
300 Purchased Professional and Technical Services				
329 Professional Educational Services – Other		123.00		123.00
330 Other Professional Services	9,127.80	18,532.20		27,660.00
Total Purchased Professional and Technical Services	\$9,127.80	\$18,655.20		\$27,783.00
400 Purchased Property Services				
440 Rentals	55.79	113.27		169.06
Total Purchased Property Services	\$55.79	\$113.27		\$169.06
500 Other Purchased Services				
530 Communications	39.30	55.00		94.30
580 Travel	204.42	181.90		386.32
Total Other Purchased Services	\$243.72	\$236.90		\$480.62
600 Supplies				
610 General Supplies	6,280.10	2,084.10		8,364.20
630 Food	33.32	67.65		100.97
640 Books and Periodicals	90.00			90.00
650 Supplies & Fees – Technology Related	25.00			25.00
Total Supplies	\$6,428.42	\$2,151.75		\$8,580.17
800 Other Objects				
810 Dues and Fees	476.70	111.30		588.00
890 Miscellaneous Expenditures		2,081.00		2,081.00
Total Other Objects	\$476.70	\$2,192.30		\$2,669.00
Total 2100 Support Services – Students	\$421,957.89	\$428,639.60		\$850,597.49

General Fund (10)

	<u>Elementary</u>	<u>Secondary</u>	<u>Federal</u>	<u>Total</u>
2120 Guidance Services				
100 Personnel Services – Salaries				
100 Personnel Services – Salaries	221,203.40	226,338.93		447,542.33
Total Personnel Services – Salaries	\$221,203.40	\$226,338.93		\$447,542.33
200 Personnel Services – Employee Benefits				
210 Group Insurance – Contracted Provider	55,643.74	43,050.48		98,694.22
220 Social Security Contributions	16,522.66	17,001.89		33,524.55
230 PSERS Retirement Contributions	73,914.31	75,662.89		149,577.20
Total Personnel Services – Employee Benefits	\$146,080.71	\$135,715.26		\$281,795.97
300 Purchased Professional and Technical Services				
329 Professional Educational Services – Other		15.00		15.00
330 Other Professional Services	9,127.80	18,532.20		27,660.00
Total Purchased Professional and Technical Services	\$9,127.80	\$18,547.20		\$27,675.00
400 Purchased Property Services				
440 Rentals	55.79	113.27		169.06
Total Purchased Property Services	\$55.79	\$113.27		\$169.06
500 Other Purchased Services				
530 Communications	39.30	55.00		94.30
580 Travel	43.12			43.12
Total Other Purchased Services	\$82.42	\$55.00		\$137.42
600 Supplies				
610 General Supplies	5,493.96	1,197.60		6,691.56
630 Food	33.32	67.65		100.97
640 Books and Periodicals	90.00			90.00
650 Supplies & Fees – Technology Related	25.00			25.00
Total Supplies	\$5,642.28	\$1,265.25		\$6,907.53
800 Other Objects				
810 Dues and Fees	378.00			378.00
890 Miscellaneous Expenditures		2,081.00		2,081.00
Total Other Objects	\$378.00	\$2,081.00		\$2,459.00
Total 2120 Guidance Services	\$382,570.40	\$384,115.91		\$766,686.31

General Fund (10)

	<u>Elementary</u>	<u>Secondary</u>	<u>Federal</u>	<u>Total</u>
2140 Psychological Services				
100 Personnel Services – Salaries				
100 Personnel Services – Salaries	24,218.63	27,310.37		51,529.00
Total Personnel Services – Salaries	\$24,218.63	\$27,310.37		\$51,529.00
200 Personnel Services – Employee Benefits				
210 Group Insurance – Contracted Provider	4,202.08	4,738.52		8,940.60
220 Social Security Contributions	1,824.31	2,057.19		3,881.50
230 PSERS Retirement Contributions	8,096.33	9,129.91		17,226.24
Total Personnel Services – Employee Benefits	\$14,122.72	\$15,925.62		\$30,048.34
300 Purchased Professional and Technical Services				
329 Professional Educational Services – Other		108.00		108.00
Total Purchased Professional and Technical Services		\$108.00		\$108.00
500 Other Purchased Services				
580 Travel	161.30	181.90		343.20
Total Other Purchased Services	\$161.30	\$181.90		\$343.20
600 Supplies				
610 General Supplies	786.14	886.50		1,672.64
Total Supplies	\$786.14	\$886.50		\$1,672.64
800 Other Objects				
810 Dues and Fees	98.70	111.30		210.00
Total Other Objects	\$98.70	\$111.30		\$210.00
Total 2140 Psychological Services	\$39,387.49	\$44,523.69		\$83,911.18

General Fund (10)

	<u>Elementary</u>	<u>Secondary</u>	<u>Federal</u>	<u>Total</u>
2200 Support Services – Instructional Staff				
100 Personnel Services – Salaries				
100 Personnel Services – Salaries	253,568.13	236,797.41		490,365.54
Total Personnel Services – Salaries	\$253,568.13	\$236,797.41		\$490,365.54
200 Personnel Services – Employee Benefits				
210 Group Insurance – Contracted Provider	50,548.57	54,134.81		104,683.38
220 Social Security Contributions	18,426.61	16,657.35		35,083.96
230 PSERS Retirement Contributions	82,848.35	75,262.88		158,111.23
240 Tuition Reimbursement	51,121.82	12,663.28		63,785.10
Total Personnel Services – Employee Benefits	\$202,945.35	\$158,718.32		\$361,663.67
300 Purchased Professional and Technical Services				
329 Professional Educational Services – Other		1,457.00		1,457.00
Total Purchased Professional and Technical Services		\$1,457.00		\$1,457.00
500 Other Purchased Services				
530 Communications	235.00	265.00		500.00
550 Printing and Binding	368.95	416.05		785.00
580 Travel	2,500.42	2,424.51		4,924.93
Total Other Purchased Services	\$3,104.37	\$3,105.56		\$6,209.93
600 Supplies				
610 General Supplies	3,037.22	3,001.13		6,038.35
630 Food	2,120.18	2,390.84		4,511.02
640 Books and Periodicals	9,876.90	5,905.78		15,782.68
650 Supplies & Fees – Technology Related	6,827.17	7,188.56		14,015.73
Total Supplies	\$21,861.47	\$18,486.31		\$40,347.78
800 Other Objects				
810 Dues and Fees	481.28	859.72		1,341.00
Total Other Objects	\$481.28	\$859.72		\$1,341.00
Total 2200 Support Services – Instructional Staff	\$481,960.60	\$419,424.32		\$901,384.92

General Fund (10)

	<u>Elementary</u>	<u>Secondary</u>	<u>Federal</u>	<u>Total</u>
2250 School Library Services				
100 Personnel Services – Salaries				
100 Personnel Services – Salaries	160,454.29	131,796.71		292,251.00
Total Personnel Services – Salaries	\$160,454.29	\$131,796.71		\$292,251.00
200 Personnel Services – Employee Benefits				
210 Group Insurance – Contracted Provider	26,819.73	27,376.77		54,196.50
220 Social Security Contributions	11,479.11	8,822.93		20,302.04
230 PSERS Retirement Contributions	51,720.41	40,161.17		91,881.58
Total Personnel Services – Employee Benefits	\$90,019.25	\$76,360.87		\$166,380.12
500 Other Purchased Services				
580 Travel	350.38			350.38
Total Other Purchased Services	\$350.38			\$350.38
600 Supplies				
610 General Supplies	2,237.39	1,428.83		3,666.22
640 Books and Periodicals	9,624.54	5,621.20		15,245.74
650 Supplies & Fees – Technology Related	6,827.17	7,188.56		14,015.73
Total Supplies	\$18,689.10	\$14,238.59		\$32,927.69
800 Other Objects				
810 Dues and Fees		317.00		317.00
Total Other Objects		\$317.00		\$317.00
Total 2250 School Library Services	\$269,513.02	\$222,713.17		\$492,226.19

General Fund (10)

	<u>Elementary</u>	<u>Secondary</u>	<u>Federal</u>	<u>Total</u>
2260 Instruction and Curriculum Development Services				
100 Personnel Services – Salaries				
100 Personnel Services – Salaries	93,113.84	105,000.70		198,114.54
Total Personnel Services – Salaries	\$93,113.84	\$105,000.70		\$198,114.54
200 Personnel Services – Employee Benefits				
210 Group Insurance – Contracted Provider	23,728.84	26,758.04		50,486.88
220 Social Security Contributions	6,947.50	7,834.42		14,781.92
230 PSERS Retirement Contributions	31,127.94	35,101.71		66,229.65
Total Personnel Services – Employee Benefits	\$61,804.28	\$69,694.17		\$131,498.45
300 Purchased Professional and Technical Services				
329 Professional Educational Services – Other		1,457.00		1,457.00
Total Purchased Professional and Technical Services		\$1,457.00		\$1,457.00
500 Other Purchased Services				
530 Communications	235.00	265.00		500.00
550 Printing and Binding	368.95	416.05		785.00
580 Travel	2,150.04	2,424.51		4,574.55
Total Other Purchased Services	\$2,753.99	\$3,105.56		\$5,859.55
600 Supplies				
610 General Supplies	799.83	1,572.30		2,372.13
630 Food	2,120.18	2,390.84		4,511.02
640 Books and Periodicals	252.36	284.58		536.94
Total Supplies	\$3,172.37	\$4,247.72		\$7,420.09
800 Other Objects				
810 Dues and Fees	481.28	542.72		1,024.00
Total Other Objects	\$481.28	\$542.72		\$1,024.00
Total 2260 Instruction and Curriculum Development Services	\$161,325.76	\$184,047.87		\$345,373.63

General Fund (10)

	<u>Elementary</u>	<u>Secondary</u>	<u>Federal</u>	<u>Total</u>
2270 Instructional Staff Professional Development Services				
200 Personnel Services – Employee Benefits				
240 Tuition Reimbursement	51,121.82	12,663.28		63,785.10
Total Personnel Services – Employee Benefits	\$51,121.82	\$12,663.28		\$63,785.10
Total 2270 Instructional Staff Professional Development Services	\$51,121.82	\$12,663.28		\$63,785.10

General Fund (10)

	<u>Elementary</u>	<u>Secondary</u>	<u>Federal</u>	<u>Total</u>
2300 Support Services – Administration				
100 Personnel Services – Salaries				
100 Personnel Services – Salaries	271,460.19	292,526.17		794,089.15
Total Personnel Services – Salaries	\$271,460.19	\$292,526.17		\$794,089.15
200 Personnel Services – Employee Benefits				
210 Group Insurance – Contracted Provider	83,816.99	118,339.51		235,133.37
220 Social Security Contributions	20,002.87	21,576.56		58,542.12
230 PSERS Retirement Contributions	87,641.64	95,873.77		253,479.97
Total Personnel Services – Employee Benefits	\$191,461.50	\$235,789.84		\$547,155.46
300 Purchased Professional and Technical Services				
329 Professional Educational Services – Other		2,718.00		2,718.00
330 Other Professional Services				84,209.51
Total Purchased Professional and Technical Services		\$2,718.00		\$86,927.51
400 Purchased Property Services				
440 Rentals	2,167.24	6,578.36		11,595.85
Total Purchased Property Services	\$2,167.24	\$6,578.36		\$11,595.85
500 Other Purchased Services				
520 Insurance – General				278.75
530 Communications	6,973.86	9,521.71		19,690.55
549 Other Advertising/Public Relations				28,103.44
550 Printing and Binding	626.67	1,645.13		14,209.19
580 Travel	752.42	316.76		4,382.87
Total Other Purchased Services	\$8,352.95	\$11,483.60		\$66,664.80
600 Supplies				
610 General Supplies	8,681.21	3,119.37		15,755.52
630 Food		199.65		5,908.88
640 Books and Periodicals	1,680.48			2,848.52
650 Supplies & Fees – Technology Related	127.05	720.95		3,405.33
Total Supplies	\$10,488.74	\$4,039.97		\$27,918.25
800 Other Objects				
810 Dues and Fees	791.35	398.65		3,424.00
Total Other Objects	\$791.35	\$398.65		\$3,424.00
Total 2300 Support Services – Administration	\$484,721.97	\$553,534.59		\$1,537,775.02

General Fund (10)

2310 Board Services

Elementary

Secondary

Federal

Total

300 Purchased Professional and Technical Services

330 Other Professional Services

7,320.00

Total Purchased Professional and Technical Services

\$7,320.00

500 Other Purchased Services

520 Insurance – General

278.75

530 Communications

7.58

549 Other Advertising/Public Relations

28,103.44

Total Other Purchased Services

\$28,389.77

600 Supplies

610 General Supplies

194.81

630 Food

3,143.70

Total Supplies

\$3,338.51

800 Other Objects

810 Dues and Fees

550.00

Total Other Objects

\$550.00

Total 2310 Board Services

\$39,598.28

General Fund (10)

	<u>Elementary</u>	<u>Secondary</u>	<u>Federal</u>	<u>Total</u>
2330 Tax Assessment and Collection Services				
100 Personnel Services – Salaries				
100 Personnel Services – Salaries				20,794.98
Total Personnel Services – Salaries				\$20,794.98
200 Personnel Services – Employee Benefits				
220 Social Security Contributions				1,590.84
Total Personnel Services – Employee Benefits				\$1,590.84
300 Purchased Professional and Technical Services				
330 Other Professional Services				51,984.84
Total Purchased Professional and Technical Services				\$51,984.84
500 Other Purchased Services				
530 Communications				3,187.40
550 Printing and Binding				7,068.36
Total Other Purchased Services				\$10,255.76
600 Supplies				
610 General Supplies				(9.74)
650 Supplies & Fees – Technology Related				2,557.33
Total Supplies				\$2,547.59
Total 2330 Tax Assessment and Collection Services				\$87,174.01

General Fund (10)

2350 Legal and Accounting Services

Elementary

Secondary

Federal

Total

300 Purchased Professional and Technical Services

330 Other Professional Services

24,904.67

Total Purchased Professional and Technical Services

\$24,904.67

Total 2350 Legal and Accounting Services

\$24,904.67

General Fund (10)

	<u>Elementary</u>	<u>Secondary</u>	<u>Federal</u>	<u>Total</u>
2360 Office of the Superintendent / Executive Director Services				
100 Personnel Services – Salaries				
100 Personnel Services – Salaries				209,307.81
Total Personnel Services – Salaries				\$209,307.81
200 Personnel Services – Employee Benefits				
210 Group Insurance – Contracted Provider				32,976.87
220 Social Security Contributions				15,371.85
230 PSERS Retirement Contributions				69,964.56
Total Personnel Services – Employee Benefits				\$118,313.28
400 Purchased Property Services				
440 Rentals				2,850.25
Total Purchased Property Services				\$2,850.25
500 Other Purchased Services				
530 Communications	5,194.38	5,857.49		11,051.87
550 Printing and Binding				4,869.03
580 Travel				3,313.69
Total Other Purchased Services	\$5,194.38	\$5,857.49		\$19,234.59
600 Supplies				
610 General Supplies				3,769.87
630 Food				2,565.53
640 Books and Periodicals				1,168.04
Total Supplies				\$7,503.44
800 Other Objects				
810 Dues and Fees				1,684.00
Total Other Objects				\$1,684.00
Total 2360 Office of the Superintendent / Executive Director Services	\$5,194.38	\$5,857.49		\$358,893.37

General Fund (10)

	<u>Elementary</u>	<u>Secondary</u>	<u>Federal</u>	<u>Total</u>
2380 Office of the Principal Services				
100 Personnel Services – Salaries				
100 Personnel Services – Salaries	271,460.19	292,526.17		563,986.36
Total Personnel Services – Salaries	\$271,460.19	\$292,526.17		\$563,986.36
200 Personnel Services – Employee Benefits				
210 Group Insurance – Contracted Provider	83,816.99	118,339.51		202,156.50
220 Social Security Contributions	20,002.87	21,576.56		41,579.43
230 PSERS Retirement Contributions	87,641.64	95,873.77		183,515.41
Total Personnel Services – Employee Benefits	\$191,461.50	\$235,789.84		\$427,251.34
300 Purchased Professional and Technical Services				
329 Professional Educational Services – Other		2,718.00		2,718.00
Total Purchased Professional and Technical Services		\$2,718.00		\$2,718.00
400 Purchased Property Services				
440 Rentals	2,167.24	6,578.36		8,745.60
Total Purchased Property Services	\$2,167.24	\$6,578.36		\$8,745.60
500 Other Purchased Services				
530 Communications	1,779.48	3,664.22		5,443.70
550 Printing and Binding	626.67	1,645.13		2,271.80
580 Travel	752.42	316.76		1,069.18
Total Other Purchased Services	\$3,158.57	\$5,626.11		\$8,784.68
600 Supplies				
610 General Supplies	8,681.21	3,119.37		11,800.58
630 Food		199.65		199.65
640 Books and Periodicals	1,680.48			1,680.48
650 Supplies & Fees – Technology Related	127.05	720.95		848.00
Total Supplies	\$10,488.74	\$4,039.97		\$14,528.71
800 Other Objects				
810 Dues and Fees	791.35	398.65		1,190.00
Total Other Objects	\$791.35	\$398.65		\$1,190.00
Total 2380 Office of the Principal Services	\$479,527.59	\$547,677.10		\$1,027,204.69

General Fund (10)

	<u>Elementary</u>	<u>Secondary</u>	<u>Federal</u>	<u>Total</u>
2400 Support Services – Pupil Health				
100 Personnel Services – Salaries				
100 Personnel Services – Salaries				170,994.29
Total Personnel Services – Salaries				\$170,994.29
200 Personnel Services – Employee Benefits				
210 Group Insurance – Contracted Provider				95,071.70
220 Social Security Contributions				12,344.70
230 PSERS Retirement Contributions				56,785.01
Total Personnel Services – Employee Benefits				\$164,201.41
300 Purchased Professional and Technical Services				
329 Professional Educational Services – Other				80.00
330 Other Professional Services				16,240.46
Total Purchased Professional and Technical Services				\$16,320.46
400 Purchased Property Services				
430 Repairs and Maintenance Services				450.00
Total Purchased Property Services				\$450.00
500 Other Purchased Services				
580 Travel				660.01
Total Other Purchased Services				\$660.01
600 Supplies				
610 General Supplies				4,009.29
Total Supplies				\$4,009.29
Total 2400 Support Services – Pupil Health				\$356,635.46

General Fund (10)

2440 Nursing Services

	<u>Elementary</u>	<u>Secondary</u>	<u>Federal</u>	<u>Total</u>
100 Personnel Services – Salaries				
100 Personnel Services – Salaries				170,994.29
Total Personnel Services – Salaries				\$170,994.29
200 Personnel Services – Employee Benefits				
210 Group Insurance – Contracted Provider				95,071.70
220 Social Security Contributions				12,344.70
230 PSERS Retirement Contributions				56,785.01
Total Personnel Services – Employee Benefits				\$164,201.41
300 Purchased Professional and Technical Services				
329 Professional Educational Services – Other				80.00
330 Other Professional Services				16,240.46
Total Purchased Professional and Technical Services				\$16,320.46
400 Purchased Property Services				
430 Repairs and Maintenance Services				450.00
Total Purchased Property Services				\$450.00
500 Other Purchased Services				
580 Travel				660.01
Total Other Purchased Services				\$660.01
600 Supplies				
610 General Supplies				4,009.29
Total Supplies				\$4,009.29
Total 2440 Nursing Services				\$356,635.46

General Fund (10)

	<u>Elementary</u>	<u>Secondary</u>	<u>Federal</u>	<u>Total</u>
2500 Support Services – Business				
100 Personnel Services – Salaries				
100 Personnel Services – Salaries				182,033.83
Total Personnel Services – Salaries				\$182,033.83
200 Personnel Services – Employee Benefits				
210 Group Insurance – Contracted Provider				65,457.09
220 Social Security Contributions				13,439.19
230 PSERS Retirement Contributions				60,853.87
Total Personnel Services – Employee Benefits				\$139,750.15
300 Purchased Professional and Technical Services				
329 Professional Educational Services – Other				318.00
330 Other Professional Services				6,250.00
Total Purchased Professional and Technical Services				\$6,568.00
400 Purchased Property Services				
430 Repairs and Maintenance Services				1,273.17
Total Purchased Property Services				\$1,273.17
500 Other Purchased Services				
530 Communications				801.80
580 Travel				251.36
Total Other Purchased Services				\$1,053.16
600 Supplies				
610 General Supplies				1,063.30
650 Supplies & Fees – Technology Related				34,413.63
Total Supplies				\$35,476.93
800 Other Objects				
810 Dues and Fees				2,717.00
Total Other Objects				\$2,717.00
Total 2500 Support Services – Business				\$368,872.24

General Fund (10)

2510 Fiscal Services

Elementary

Secondary

Federal

Total

100 Personnel Services – Salaries

100 Personnel Services – Salaries 182,033.83

Total Personnel Services – Salaries \$182,033.83

200 Personnel Services – Employee Benefits

210 Group Insurance – Contracted Provider 65,457.09

220 Social Security Contributions 13,439.19

230 PSERS Retirement Contributions 60,853.87

Total Personnel Services – Employee Benefits \$139,750.15

300 Purchased Professional and Technical Services

329 Professional Educational Services – Other 318.00

330 Other Professional Services 6,250.00

Total Purchased Professional and Technical Services \$6,568.00

400 Purchased Property Services

430 Repairs and Maintenance Services 1,273.17

Total Purchased Property Services \$1,273.17

500 Other Purchased Services

530 Communications 801.80

580 Travel 251.36

Total Other Purchased Services \$1,053.16

600 Supplies

610 General Supplies 1,063.30

650 Supplies & Fees – Technology Related 34,413.63

Total Supplies \$35,476.93

800 Other Objects

810 Dues and Fees 2,717.00

Total Other Objects \$2,717.00

Total 2510 Fiscal Services \$368,872.24

General Fund (10)

	<u>Elementary</u>	<u>Secondary</u>	<u>Federal</u>	<u>Total</u>
2511 Supervision of Fiscal Services - Head of Component				
100 <u>Personnel Services – Salaries</u>				
100 Personnel Services – Salaries				89,100.00
Total Personnel Services – Salaries				\$89,100.00
200 <u>Personnel Services – Employee Benefits</u>				
210 Group Insurance – Contracted Provider				8,949.12
220 Social Security Contributions				6,703.42
230 PSERS Retirement Contributions				29,786.06
Total Personnel Services – Employee Benefits				\$45,438.60
500 <u>Other Purchased Services</u>				
580 Travel				226.00
Total Other Purchased Services				\$226.00
600 <u>Supplies</u>				
610 General Supplies				85.19
Total Supplies				\$85.19
800 <u>Other Objects</u>				
810 Dues and Fees				307.00
Total Other Objects				\$307.00
Total 2511 Supervision of Fiscal Services - Head of Component				\$135,156.79

General Fund (10)

2514 Payroll Services

Elementary

Secondary

Federal

Total

100 Personnel Services – Salaries

100 Personnel Services – Salaries

29,420.45

Total Personnel Services – Salaries

\$29,420.45

200 Personnel Services – Employee Benefits

210 Group Insurance – Contracted Provider

23,276.40

220 Social Security Contributions

2,014.22

230 PSERS Retirement Contributions

9,835.32

Total Personnel Services – Employee Benefits

\$35,125.94

300 Purchased Professional and Technical Services

329 Professional Educational Services – Other

173.00

330 Other Professional Services

6,250.00

Total Purchased Professional and Technical Services

\$6,423.00

Total 2514 Payroll Services

\$70,969.39

General Fund (10)

	<u>Elementary</u>	<u>Secondary</u>	<u>Federal</u>	<u>Total</u>
2515 Financial Accounting Services				
100 Personnel Services – Salaries				
100 Personnel Services – Salaries				63,513.38
Total Personnel Services – Salaries				\$63,513.38
200 Personnel Services – Employee Benefits				
210 Group Insurance – Contracted Provider				33,231.57
220 Social Security Contributions				4,721.55
230 PSERS Retirement Contributions				21,232.49
Total Personnel Services – Employee Benefits				\$59,185.61
300 Purchased Professional and Technical Services				
329 Professional Educational Services – Other				145.00
Total Purchased Professional and Technical Services				\$145.00
400 Purchased Property Services				
430 Repairs and Maintenance Services				1,273.17
Total Purchased Property Services				\$1,273.17
500 Other Purchased Services				
530 Communications				801.80
580 Travel				25.36
Total Other Purchased Services				\$827.16
600 Supplies				
610 General Supplies				978.11
650 Supplies & Fees – Technology Related				34,413.63
Total Supplies				\$35,391.74
800 Other Objects				
810 Dues and Fees				2,410.00
Total Other Objects				\$2,410.00
Total 2515 Financial Accounting Services				\$162,746.06

General Fund (10)

	<u>Elementary</u>	<u>Secondary</u>	<u>Federal</u>	<u>Total</u>
2600 Operation and Maintenance of Plant Services				
100 Personnel Services – Salaries				
100 Personnel Services – Salaries				436,690.97
Total Personnel Services – Salaries				\$436,690.97
200 Personnel Services – Employee Benefits				
210 Group Insurance – Contracted Provider				196,970.42
220 Social Security Contributions				32,230.07
230 PSERS Retirement Contributions				138,717.38
Total Personnel Services – Employee Benefits				\$367,917.87
300 Purchased Professional and Technical Services				
329 Professional Educational Services – Other				40.00
330 Other Professional Services				251,217.48
Total Purchased Professional and Technical Services				\$251,257.48
400 Purchased Property Services				
410 Cleaning Services				59,115.33
420 Utility Services				59,803.64
430 Repairs and Maintenance Services				165,755.53
440 Rentals				17,431.64
460 Extermination Services				6,444.00
490 Other Purchased Property Services				723.90
Total Purchased Property Services				\$309,274.04
500 Other Purchased Services				
523 General Property and Liability Insurance				95,032.00
530 Communications				14,032.64
580 Travel				455.60
Total Other Purchased Services				\$109,520.24
600 Supplies				
610 General Supplies	92,798.17	68,910.91		161,709.08
620 Energy				415,440.12
630 Food				144.08
650 Supplies & Fees – Technology Related				120.00
Total Supplies	\$92,798.17	\$68,910.91		\$577,413.28
700 Property				
752 Capital Equipment – Original and Additional				22,141.19
Total Property				\$22,141.19
800 Other Objects				
810 Dues and Fees				4,453.10
Total Other Objects				\$4,453.10
Total 2600 Operation and Maintenance of Plant Services	\$92,798.17	\$68,910.91		\$2,078,668.17

General Fund (10)

	<u>Elementary</u>	<u>Secondary</u>	<u>Federal</u>	<u>Total</u>
2620 Operation of Buildings Services				
100 Personnel Services – Salaries				
100 Personnel Services – Salaries				394,692.97
Total Personnel Services – Salaries				\$394,692.97
200 Personnel Services – Employee Benefits				
210 Group Insurance – Contracted Provider				196,970.42
220 Social Security Contributions				29,017.17
230 PSERS Retirement Contributions				126,532.79
Total Personnel Services – Employee Benefits				\$352,520.38
300 Purchased Professional and Technical Services				
329 Professional Educational Services – Other				40.00
330 Other Professional Services				251,217.48
Total Purchased Professional and Technical Services				\$251,257.48
400 Purchased Property Services				
410 Cleaning Services				59,115.33
420 Utility Services				59,803.64
430 Repairs and Maintenance Services				165,755.53
440 Rentals				17,431.64
460 Extermination Services				6,444.00
490 Other Purchased Property Services				723.90
Total Purchased Property Services				\$309,274.04
500 Other Purchased Services				
523 General Property and Liability Insurance				95,032.00
530 Communications				14,032.64
580 Travel				455.60
Total Other Purchased Services				\$109,520.24
600 Supplies				
610 General Supplies	92,798.17	66,559.36		159,357.53
620 Energy				415,440.12
630 Food				144.08
650 Supplies & Fees – Technology Related				120.00
Total Supplies	\$92,798.17	\$66,559.36		\$575,061.73
700 Property				
752 Capital Equipment – Original and Additional				22,141.19
Total Property				\$22,141.19
800 Other Objects				
810 Dues and Fees				4,453.10
Total Other Objects				\$4,453.10
Total 2620 Operation of Buildings Services	\$92,798.17	\$66,559.36		\$2,018,921.13

General Fund (10)

2660 Safety and Security Services

Elementary

Secondary

Federal

Total

100 Personnel Services – Salaries

100 Personnel Services – Salaries

41,998.00

Total Personnel Services – Salaries

\$41,998.00

200 Personnel Services – Employee Benefits

220 Social Security Contributions

3,212.90

230 PSERS Retirement Contributions

12,184.59

Total Personnel Services – Employee Benefits

\$15,397.49

600 Supplies

610 General Supplies

2,351.55

2,351.55

Total Supplies

\$2,351.55

\$2,351.55

Total 2660 Safety and Security Services

\$2,351.55

\$59,747.04

General Fund (10)

	<u>Elementary</u>	<u>Secondary</u>	<u>Federal</u>	<u>Total</u>
2700 Student Transportation Services				
300 <u>Purchased Professional and Technical Services</u>				
330 Other Professional Services				500.00
Total Purchased Professional and Technical Services				\$500.00
500 <u>Other Purchased Services</u>				
513 Contracted Carriers				1,052,322.91
516 Student Transportation Services From the IU				1,522.08
Total Other Purchased Services				\$1,053,844.99
600 <u>Supplies</u>				
630 Food				132.64
Total Supplies				\$132.64
Total 2700 Student Transportation Services				\$1,054,477.63

General Fund (10)

2720 Vehicle Operation Services

Elementary

Secondary

Federal

Total

300 Purchased Professional and Technical Services

330 Other Professional Services

500.00

Total Purchased Professional and Technical Services

\$500.00

500 Other Purchased Services

513 Contracted Carriers

1,009,712.41

516 Student Transportation Services From the IU

1,522.08

Total Other Purchased Services

\$1,011,234.49

600 Supplies

630 Food

132.64

Total Supplies

\$132.64

Total 2720 Vehicle Operation Services

\$1,011,867.13

General Fund (10)

	<u>Elementary</u>	<u>Secondary</u>	<u>Federal</u>	<u>Total</u>
2750 Nonpublic Transportation				
500 <u>Other Purchased Services</u>				
513 Contracted Carriers				42,610.50
Total Other Purchased Services				\$42,610.50
Total 2750 Nonpublic Transportation				\$42,610.50

General Fund (10)

	<u>Elementary</u>	<u>Secondary</u>	<u>Federal</u>	<u>Total</u>
2800 Support Services – Central				
100 Personnel Services – Salaries				
100 Personnel Services – Salaries				225,816.31
Total Personnel Services – Salaries				\$225,816.31
200 Personnel Services – Employee Benefits				
210 Group Insurance – Contracted Provider				81,097.61
220 Social Security Contributions				16,732.72
230 PSERS Retirement Contributions				75,489.72
Total Personnel Services – Employee Benefits				\$173,320.05
300 Purchased Professional and Technical Services				
330 Other Professional Services				4,953.00
Total Purchased Professional and Technical Services				\$4,953.00
400 Purchased Property Services				
430 Repairs and Maintenance Services				32,307.50
Total Purchased Property Services				\$32,307.50
500 Other Purchased Services				
530 Communications				47,128.05
580 Travel				907.20
Total Other Purchased Services				\$48,035.25
600 Supplies				
610 General Supplies				177,493.62
650 Supplies & Fees – Technology Related				193,508.94
Total Supplies				\$371,002.56
700 Property				
752 Capital Equipment – Original and Additional				498,984.86
Total Property				\$498,984.86
Total 2800 Support Services – Central				\$1,354,419.53

General Fund (10)

2810 Planning, Research, Development and Evaluation Services

Elementary

Secondary

Federal

Total

100 Personnel Services – Salaries

100 Personnel Services – Salaries 225,816.31

Total Personnel Services – Salaries \$225,816.31

200 Personnel Services – Employee Benefits

210 Group Insurance – Contracted Provider 81,097.61

220 Social Security Contributions 16,732.72

230 PSERS Retirement Contributions 75,489.72

Total Personnel Services – Employee Benefits \$173,320.05

300 Purchased Professional and Technical Services

330 Other Professional Services 4,953.00

Total Purchased Professional and Technical Services \$4,953.00

400 Purchased Property Services

430 Repairs and Maintenance Services 32,307.50

Total Purchased Property Services \$32,307.50

500 Other Purchased Services

530 Communications 47,128.05

580 Travel 907.20

Total Other Purchased Services \$48,035.25

600 Supplies

610 General Supplies 177,493.62

650 Supplies & Fees – Technology Related 193,508.94

Total Supplies \$371,002.56

700 Property

752 Capital Equipment – Original and Additional 498,984.86

Total Property \$498,984.86

Total 2810 Planning, Research, Development and Evaluation Services \$1,354,419.53

General Fund (10)

3000 Operation of Non-Instructional Services	<u>Total</u>
100 Personnel Services – Salaries	
100 Personnel Services – Salaries	264,609.38
Total Personnel Services – Salaries	\$264,609.38
200 Personnel Services – Employee Benefits	
210 Group Insurance – Contracted Provider	17,069.20
220 Social Security Contributions	20,080.33
230 PSERS Retirement Contributions	54,557.36
Total Personnel Services – Employee Benefits	\$91,706.89
300 Purchased Professional and Technical Services	
329 Professional Educational Services – Other	380.00
330 Other Professional Services	69,614.60
390 Other Purchased Professional and Technical Services	30,069.00
Total Purchased Professional and Technical Services	\$100,063.60
400 Purchased Property Services	
430 Repairs and Maintenance Services	8,701.47
440 Rentals	51,644.87
Total Purchased Property Services	\$60,346.34
500 Other Purchased Services	
510 Student Transportation Services	91,695.92
520 Insurance – General	10,844.00
530 Communications	943.54
550 Printing and Binding	268.44
580 Travel	5,605.37
Total Other Purchased Services	\$109,357.27
600 Supplies	
610 General Supplies	100,732.88
630 Food	6,507.90
640 Books and Periodicals	164.97
Total Supplies	\$107,405.75
700 Property	
752 Capital Equipment – Original and Additional	10,990.00
Total Property	\$10,990.00
800 Other Objects	
810 Dues and Fees	3,625.00
890 Miscellaneous Expenditures	7,027.43
Total Other Objects	\$10,652.43
Total 3000 Operation of Non-Instructional Services	\$755,131.66

General Fund (10)

3200 Student Activities

Elementary

Secondary

Federal

Total

100 Personnel Services – Salaries

100 Personnel Services – Salaries 264,609.38

Total Personnel Services – Salaries \$264,609.38

200 Personnel Services – Employee Benefits

210 Group Insurance – Contracted Provider 17,069.20

220 Social Security Contributions 20,080.33

230 PSERS Retirement Contributions 54,557.36

Total Personnel Services – Employee Benefits \$91,706.89

300 Purchased Professional and Technical Services

329 Professional Educational Services – Other 380.00

330 Other Professional Services 65,285.39

390 Other Purchased Professional and Technical Services 30,069.00

Total Purchased Professional and Technical Services \$95,734.39

400 Purchased Property Services

430 Repairs and Maintenance Services 8,701.47

440 Rentals 51,644.87

Total Purchased Property Services \$60,346.34

500 Other Purchased Services

510 Student Transportation Services 91,695.92

520 Insurance – General 10,844.00

530 Communications 943.54

550 Printing and Binding 268.44

580 Travel 5,605.37

Total Other Purchased Services \$109,357.27

600 Supplies

610 General Supplies 100,732.88

630 Food 6,507.90

640 Books and Periodicals 164.97

Total Supplies \$107,405.75

700 Property

752 Capital Equipment – Original and Additional 10,990.00

Total Property \$10,990.00

800 Other Objects

810 Dues and Fees 3,625.00

890 Miscellaneous Expenditures 7,027.43

Total Other Objects \$10,652.43

Total 3200 Student Activities \$750,802.45

General Fund (10)

3300 Community Services

Elementary

Secondary

Federal

Total

300 Purchased Professional and Technical Services

330 Other Professional Services

4,329.21

Total Purchased Professional and Technical Services

\$4,329.21

Total 3300 Community Services

\$4,329.21

General Fund (10)

5000 Other Expenditures and Financing Uses

Total

800 Other Objects

830 Interest	9,192.00
880 Refunds of Prior Years' Receipts	8,121.61

Total Other Objects	\$17,313.61
----------------------------	--------------------

900 Other Uses of Funds

920 Authority Obligations	56,075.47
932 Capital Reserve Fund Transfers Applicable To Fund 32	200,000.00
939 Other Fund Transfers	1,991,796.00

Total Other Uses of Funds	\$2,247,871.47
----------------------------------	-----------------------

Total 5000 Other Expenditures and Financing Uses	\$2,265,185.08
---	-----------------------

LEA : 116191203 Bloomsburg Area SD

Printed 1/3/2020 11:38:50 AM

General Fund (10)

	<u>Elementary</u>	<u>Secondary</u>	<u>Federal</u>	<u>Total</u>
5100 Debt Service / Other Expenditures and Financing Uses				
800 Other Objects				
830 Interest				9,192.00
880 Refunds of Prior Years' Receipts				8,121.61
Total Other Objects				\$17,313.61
900 Other Uses of Funds				
920 Authority Obligations				56,075.47
Total Other Uses of Funds				\$56,075.47
Total 5100 Debt Service / Other Expenditures and Financing Uses				\$73,389.08

General Fund (10)

	<u>Elementary</u>	<u>Secondary</u>	<u>Federal</u>	<u>Total</u>
5110 Debt Service				
800 Other Objects				
830 Interest				9,192.00
Total Other Objects				\$9,192.00
900 Other Uses of Funds				
920 Authority Obligations				56,075.47
Total Other Uses of Funds				\$56,075.47
Total 5110 Debt Service				\$65,267.47

General Fund (10)

5130 Refund of Prior Year Revenues / Receipts

Elementary

Secondary

Federal

Total

800 Other Objects

880 Refunds of Prior Years' Receipts

8,121.61

Total Other Objects

\$8,121.61

Total 5130 Refund of Prior Year Revenues / Receipts

\$8,121.61

General Fund (10)

5200 Interfund Transfers – Out

Elementary

Secondary

Federal

Total

900 Other Uses of Funds

932 Capital Reserve Fund Transfers Applicable To Fund 32

200,000.00

939 Other Fund Transfers

1,991,796.00

Total Other Uses of Funds

\$2,191,796.00

Total 5200 Interfund Transfers – Out

\$2,191,796.00

General Fund (10)

5230 Capital Projects Fund Transfers

Elementary

Secondary

Federal

Total

900 Other Uses of Funds

932 Capital Reserve Fund Transfers Applicable To Fund 32

200,000.00

Total Other Uses of Funds

\$200,000.00

Total 5230 Capital Projects Fund Transfers

\$200,000.00

General Fund (10)

5240 Debt Service Fund Transfers

Elementary

Secondary

Federal

Total

900 Other Uses of Funds

939 Other Fund Transfers

1,990,558.00

Total Other Uses of Funds

\$1,990,558.00

Total 5240 Debt Service Fund Transfers

\$1,990,558.00

General Fund (10)

	<u>Elementary</u>	<u>Secondary</u>	<u>Federal</u>	<u>Total</u>
5250 Enterprise Fund Transfers				
900 Other Uses of Funds				
939 Other Fund Transfers				1,238.00
Total Other Uses of Funds				\$1,238.00
Total 5250 Enterprise Fund Transfers				\$1,238.00

Capital Reserve Fund - § 1431 (32)

2000 Support Services

Total

300 Purchased Professional and Technical Services

330 Other Professional Services

2,725.00

Total Purchased Professional and Technical Services

\$2,725.00

700 Property

752 Capital Equipment – Original and Additional

193,266.12

Total Property

\$193,266.12

Total 2000 Support Services

\$195,991.12

Capital Reserve Fund - § 1431 (32)

2600 Operation and Maintenance of Plant Services

Elementary

Secondary

Federal

Total

300 Purchased Professional and Technical Services

330 Other Professional Services

2,725.00

Total Purchased Professional and Technical Services

\$2,725.00

700 Property

752 Capital Equipment – Original and Additional

139,277.50

Total Property

\$139,277.50

Total 2600 Operation and Maintenance of Plant Services

\$142,002.50

Capital Reserve Fund - § 1431 (32)

2620 Operation of Buildings Services

Elementary

Secondary

Federal

Total

300 Purchased Professional and Technical Services

330 Other Professional Services

2,725.00

Total Purchased Professional and Technical Services

\$2,725.00

700 Property

752 Capital Equipment – Original and Additional

139,277.50

Total Property

\$139,277.50

Total 2620 Operation of Buildings Services

\$142,002.50

LEA : 116191203 Bloomsburg Area SD

Printed 1/3/2020 11:38:28 AM

Capital Reserve Fund - § 1431 (32)

2800 Support Services – Central

Elementary

Secondary

Federal

Total

700 Property

752 Capital Equipment – Original and Additional

53,988.62

Total Property

\$53,988.62

Total 2800 Support Services – Central

\$53,988.62

LEA : 116191203 Bloomsburg Area SD

Printed 1/3/2020 11:38:28 AM

Capital Reserve Fund - § 1431 (32)

2810 Planning, Research, Development and Evaluation Services

Elementary

Secondary

Federal

Total

700 Property

752 Capital Equipment – Original and Additional

53,988.62

Total Property

\$53,988.62

Total 2810 Planning, Research, Development and Evaluation Services

\$53,988.62

Capital Reserve Fund - § 1431 (32)

4000 Facilities Acquisition, Construction and Improvement Services

Total

300 Purchased Professional and Technical Services

330 Other Professional Services

53,575.62

Total Purchased Professional and Technical Services

\$53,575.62

400 Purchased Property Services

450 Construction Services

350,733.20

Total Purchased Property Services

\$350,733.20

Total 4000 Facilities Acquisition, Construction and Improvement Services

\$404,308.82

Capital Reserve Fund - § 1431 (32)

4400 Architecture and Engineering Services / Educational Specifications – Improvements

Elementary

Secondary

Federal

Total

300 Purchased Professional and Technical Services

330 Other Professional Services

55,825.62

Total Purchased Professional and Technical Services

\$55,825.62

Total 4400 Architecture and Engineering Services / Educational Specifications – Improvements

\$55,825.62

Capital Reserve Fund - § 1431 (32)

	<u>Elementary</u>	<u>Secondary</u>	<u>Federal</u>	<u>Total</u>
4600 Existing Building Improvement Services				
300 <u>Purchased Professional and Technical Services</u>				
330 Other Professional Services				(2,250.00)
Total Purchased Professional and Technical Services				(\$2,250.00)
400 <u>Purchased Property Services</u>				
450 Construction Services				350,733.20
Total Purchased Property Services				\$350,733.20
Total 4600 Existing Building Improvement Services				\$348,483.20

Other Capital Projects Fund (39)

2000 Support Services

	<u>Total</u>
600 Supplies	
610 General Supplies	7,991.00
Total Supplies	\$7,991.00
700 Property	
752 Capital Equipment – Original and Additional	1,202,945.73
Total Property	\$1,202,945.73
Total 2000 Support Services	\$1,210,936.73

Other Capital Projects Fund (39)

2800 Support Services – Central

Elementary

Secondary

Federal

Total

600 Supplies

610 General Supplies

7,991.00

Total Supplies

\$7,991.00

700 Property

752 Capital Equipment – Original and Additional

1,202,945.73

Total Property

\$1,202,945.73

Total 2800 Support Services – Central

\$1,210,936.73

Other Capital Projects Fund (39)

2810 Planning, Research, Development and Evaluation Services

Elementary

Secondary

Federal

Total

600 Supplies

610 General Supplies

7,991.00

Total Supplies

\$7,991.00

700 Property

752 Capital Equipment – Original and Additional

1,202,945.73

Total Property

\$1,202,945.73

Total 2810 Planning, Research, Development and Evaluation Services

\$1,210,936.73

Other Capital Projects Fund (39)

4000 Facilities Acquisition, Construction and Improvement Services

Total

300 Purchased Professional and Technical Services

330 Other Professional Services 486,167.06

Total Purchased Professional and Technical Services \$486,167.06

400 Purchased Property Services

440 Rentals 291,873.46

450 Construction Services 5,724,545.74

Total Purchased Property Services \$6,016,419.20

700 Property

752 Capital Equipment – Original and Additional 111,510.50

Total Property \$111,510.50

Total 4000 Facilities Acquisition, Construction and Improvement Services \$6,614,096.76

Other Capital Projects Fund (39)

4400 Architecture and Engineering Services / Educational Specifications – Improvements

Elementary

Secondary

Federal

Total

300 Purchased Professional and Technical Services

330 Other Professional Services

486,167.06

Total Purchased Professional and Technical Services

\$486,167.06

Total 4400 Architecture and Engineering Services / Educational Specifications – Improvements

\$486,167.06

Other Capital Projects Fund (39)

4600 Existing Building Improvement Services

Elementary

Secondary

Federal

Total

400 Purchased Property Services

440 Rentals

291,873.46

450 Construction Services

5,724,545.74

Total Purchased Property Services

\$6,016,419.20

700 Property

752 Capital Equipment – Original and Additional

111,510.50

Total Property

\$111,510.50

Total 4600 Existing Building Improvement Services

\$6,127,929.70

Debt Service Fund (40)

2000 Support Services

Total

300 Purchased Professional and Technical Services

330 Other Professional Services

475,109.52

Total Purchased Professional and Technical Services

\$475,109.52

800 Other Objects

810 Dues and Fees

950.00

Total Other Objects

\$950.00

Total 2000 Support Services

\$476,059.52

Debt Service Fund (40)

2300 Support Services – Administration

Elementary

Secondary

Federal

Total

300 Purchased Professional and Technical Services

330 Other Professional Services

475,109.52

Total Purchased Professional and Technical Services

\$475,109.52

Total 2300 Support Services – Administration

\$475,109.52

Debt Service Fund (40)

2390 Other Administration Services

Elementary

Secondary

Federal

Total

300 Purchased Professional and Technical Services

330 Other Professional Services

475,109.52

Total Purchased Professional and Technical Services

\$475,109.52

Total 2390 Other Administration Services

\$475,109.52

LEA : 116191203 Bloomsburg Area SD

Printed 1/3/2020 11:38:33 AM

Debt Service Fund (40)

2500 Support Services – Business

Elementary

Secondary

Federal

Total

800 Other Objects

810 Dues and Fees

950.00

Total Other Objects

\$950.00

Total 2500 Support Services – Business

\$950.00

Debt Service Fund (40)

2510 Fiscal Services

Elementary

Secondary

Federal

Total

800 Other Objects

810 Dues and Fees

950.00

Total Other Objects

\$950.00

Total 2510 Fiscal Services

\$950.00

LEA : 116191203 Bloomsburg Area SD

Printed 1/3/2020 11:38:33 AM

Debt Service Fund (40)

2515 Financial Accounting Services

Elementary

Secondary

Federal

Total

800 Other Objects

810 Dues and Fees

950.00

Total Other Objects

\$950.00

Total 2515 Financial Accounting Services

\$950.00

Debt Service Fund (40)

5000 Other Expenditures and Financing Uses

Total

800 Other Objects

830 Interest 399,608.29

Total Other Objects \$399,608.29

900 Other Uses of Funds

910 Redemption of Principal 1,590,000.00

939 Other Fund Transfers 19,520,564.33

Total Other Uses of Funds \$21,110,564.33

Total 5000 Other Expenditures and Financing Uses \$21,510,172.62

Debt Service Fund (40)

5100 Debt Service / Other Expenditures and Financing Uses	<u>Elementary</u>	<u>Secondary</u>	<u>Federal</u>	<u>Total</u>
800 <u>Other Objects</u>				
830 Interest				399,608.29
Total Other Objects				\$399,608.29
900 <u>Other Uses of Funds</u>				
910 Redemption of Principal				1,590,000.00
Total Other Uses of Funds				\$1,590,000.00
Total 5100 Debt Service / Other Expenditures and Financing Uses				\$1,989,608.29

Debt Service Fund (40)

	<u>Elementary</u>	<u>Secondary</u>	<u>Federal</u>	<u>Total</u>
5110 Debt Service				
800 Other Objects				
830 Interest				399,608.29
Total Other Objects				\$399,608.29
900 Other Uses of Funds				
910 Redemption of Principal				1,590,000.00
Total Other Uses of Funds				\$1,590,000.00
Total 5110 Debt Service				\$1,989,608.29

Debt Service Fund (40)

5200 Interfund Transfers – Out

Elementary

Secondary

Federal

Total

900 Other Uses of Funds

939 Other Fund Transfers

19,520,564.33

Total Other Uses of Funds

\$19,520,564.33

Total 5200 Interfund Transfers – Out

\$19,520,564.33

LEA : 116191203 Bloomsburg Area SD

Printed 1/3/2020 11:38:52 AM

Debt Service Fund (40)

5230 Capital Projects Fund Transfers

Elementary

Secondary

Federal

Total

900 Other Uses of Funds

939 Other Fund Transfers

19,520,564.33

Total Other Uses of Funds

\$19,520,564.33

Total 5230 Capital Projects Fund Transfers

\$19,520,564.33

	<u>General Fund(10)</u>	<u>Public Purpose Trust(27)</u>	<u>Other Compt Approved (28)</u>	<u>Athletic / Activity(29)</u>	<u>Capital Reserve (690. 1850)(31)</u>
1000 Instruction					
1100 Regular Programs - Elementary / Secondary	11,139,167.64				
1200 Special Programs - Elementary / Secondary	2,903,399.47				
1300 Vocational Education	1,466,723.41				
1400 Other Instructional Programs - Elementary / Secondary	178,530.43				
1500 Nonpublic School Programs	13,038.36				
Total Instruction	\$15,700,859.31				
2000 Support Services					
2100 Support Services - Students	850,597.49				
2200 Support Services - Instructional Staff	901,384.92				
2300 Support Services - Administration	1,537,775.02				
2400 Support Services - Pupil Health	356,635.46				
2500 Support Services - Business	368,872.24				
2600 Operation and Maintenance of Plant Services	2,078,668.17				
2700 Student Transportation Services	1,054,477.63				
2800 Support Services - Central	1,354,419.53				
Total Support Services	\$8,502,830.46				
3000 Operation of Non-Instructional Services					
3200 Student Activities	750,802.45				
3300 Community Services	4,329.21				
Total Operation of Non-Instructional Services	\$755,131.66				
4000 Facilities Acquisition, Construction and Improvement Services					
4400 Architecture and Engineering Services / Educational Specifications - Improvements					
4600 Existing Building Improvement Services					
Total Facilities Acquisition, Construction and Improvement Services					
5000 Other Expenditures and Financing Uses					
5100 Debt Service / Other Expenditures and Financing Uses	73,389.08				
5200 Interfund Transfers - Out	2,191,796.00				
Total Other Expenditures and Financing Uses	\$2,265,185.08				
TOTAL ACTUAL EXPENDITURES & OTHER FINANCING USES	\$27,224,006.51				

	<u>Capital Reserve (1431)(32)</u>	<u>Other Capital Projects Fund(39)</u>	<u>Debt Service(40)</u>	<u>Permanent(90)</u>	<u>Total</u>
1000 Instruction					
1100 Regular Programs - Elementary / Secondary					11,139,167.64
1200 Special Programs - Elementary / Secondary					2,903,399.47
1300 Vocational Education					1,466,723.41
1400 Other Instructional Programs - Elementary / Secondary					178,530.43
1500 Nonpublic School Programs					13,038.36
Total Instruction					\$15,700,859.31
2000 Support Services					
2100 Support Services - Students					850,597.49
2200 Support Services - Instructional Staff					901,384.92
2300 Support Services - Administration			475,109.52		2,012,884.54
2400 Support Services - Pupil Health					356,635.46
2500 Support Services - Business			950.00		369,822.24
2600 Operation and Maintenance of Plant Services	142,002.50				2,220,670.67
2700 Student Transportation Services					1,054,477.63
2800 Support Services - Central	53,988.62	1,210,936.73			2,619,344.88
Total Support Services	\$195,991.12	\$1,210,936.73	\$476,059.52		\$10,385,817.83
3000 Operation of Non-Instructional Services					
3200 Student Activities					750,802.45
3300 Community Services					4,329.21
Total Operation of Non-Instructional Services					\$755,131.66
4000 Facilities Acquisition, Construction and Improvement Services					
4400 Architecture and Engineering Services / Educational Specifications - Improvements	55,825.62	486,167.06			541,992.68
4600 Existing Building Improvement Services	348,483.20	6,127,929.70			6,476,412.90
Total Facilities Acquisition, Construction and Improvement Services	\$404,308.82	\$6,614,096.76			\$7,018,405.58
5000 Other Expenditures and Financing Uses					
5100 Debt Service / Other Expenditures and Financing Uses			1,989,608.29		2,062,997.37
5200 Interfund Transfers - Out			19,520,564.33		21,712,360.33
Total Other Expenditures and Financing Uses			\$21,510,172.62		\$23,775,357.70
TOTAL ACTUAL EXPENDITURES & OTHER FINANCING USES	\$600,299.94	\$7,825,033.49	\$21,986,232.14		\$57,635,572.08

PSERS Salary Data (Salary Data should relate to the General Fund only)

Amount Description	Amount
Total Salary Base for salaries subject to PSERS withholding	10,702,994.87
Total Federally Funded salaries subject to PSERS withholding	453,067.09
	<hr/>

Title I Expenditure Data

Amount Description	Amount
Expenditures Funded with Current Title I Funds	415,632.00
Expenditures Funded with Carry over Title I Funds	
	<hr/>
Total Title I Expenditure Data	\$415,632.00
	<hr/>

Benefits for Staff Relative to Collective Bargaining Agreements

	OBJECT	COVERED	NOT COVERED	TOTAL
10 General Fund	No Self Insurance data to report			
	211 Medical Insurance	2,348,466.35	367,116.91	2,715,583.26
	212 Dental Insurance	92,626.00	11,078.00	103,704.00
	215 Eye Care Insurance	12,504.00	1,528.00	14,032.00
	216 Prescription Insurance			
	271 Self-Insurance Medical Benefits			
	272 Self-Insurance Dental Benefits			
	275 Self-Insurance Eye Care Benefits			
	276 Self-Insurance Prescription Benefits			
	FUND TOTAL	\$2,453,596.35	\$379,722.91	\$2,833,319.26
50 Enterprise Fund	No Self Insurance data to report			
	211 Medical Insurance			
	212 Dental Insurance			
	215 Eye Care Insurance			
	216 Prescription Insurance			
	271 Self-Insurance Medical Benefits			
	272 Self-Insurance Dental Benefits			
	275 Self-Insurance Eye Care Benefits			
	276 Self-Insurance Prescription Benefits			
	FUND TOTAL			
60 Internal Service Fund	No Self Insurance data to report			
	211 Medical Insurance			
	212 Dental Insurance			
	215 Eye Care Insurance			
	216 Prescription Insurance			
	271 Self-Insurance Medical Benefits			
	272 Self-Insurance Dental Benefits			
	275 Self-Insurance Eye Care Benefits			
	276 Self-Insurance Prescription Benefits			
	FUND TOTAL			
Total of All Funds		\$2,453,596.35	\$379,722.91	\$2,833,319.26

LEA : 116191203 Bloomsburg Area SD

Printed 1/3/2020 11:39:15 AM

Function	Special Education (Prior Year)	Nonspecial Education (Prior Year)	Total (Prior Year)	Special Education (Current Year)	Nonspecial Education (Current Year)	Total (Current Year)
2120 Guidance Services	86,356.92	496,348.35	582,705.27	114,466.27	652,205.04	766,671.31
2140 Psychological Services	58,975.52	12,706.60	71,682.12	62,933.39	20,869.79	83,803.18
2150 Speech Pathology and Audiology Services						
2160 Social Work Services						
2260 Instruction and Curriculum Development Services	184,773.63	111,656.44	296,430.07	190,795.89	153,120.74	343,916.63
2350 Legal and Accounting Services	708.00	38,410.00	39,118.00	906.00	23,998.67	24,904.67
2420 Medical Services						
2440 Nursing Services	47,208.26	271,336.01	318,544.27	53,233.73	303,321.73	356,555.46
2700 Student Transportation Services	293,526.88	609,869.85	903,396.73	345,496.90	662,565.21	1,008,062.11
Total	\$671,549.21	\$1,540,327.25	\$2,211,876.46	\$767,832.18	\$1,816,081.18	\$2,583,913.36

(PRINCIPAL AMOUNTS ONLY)

GOVERNMENTAL FUNDS/ ACTIVITIES

	Short-Term Borrowing	General Obligation Bonds/Notes	Authority Building Obligations	Other Long-Term Debt	Other Post-Employment Benefits (OPEB)	Compensated Absences	Net Pension Liability	Total
1. Debt at Beginning of Fiscal Year		9,530,000.00	229,801.00		1,453,093.00	657,692.00	37,041,000.00	48,911,586.00
2. Additional Debt Incurred During Year		19,700,000.00			82,275.00			19,782,275.00
3. Retirements and Repayments		1,590,000.00	54,638.00			11,142.00	605,000.00	2,260,780.00
4. Debt at End of Fiscal Year		27,640,000.00	175,163.00		1,535,368.00	646,550.00	36,436,000.00	66,433,081.00
5. Accreted Interest at End Of Fiscal Year								
6. Total Debt and Accreted Interest		27,640,000.00	175,163.00		1,535,368.00	646,550.00	36,436,000.00	66,433,081.00
7. Current Portion P&I - Due within 1 year		2,635,118.62	63,251.00					2,698,369.62
8. Interest Paid during current fiscal year		399,608.29	7,006.00					406,614.29

(PRINCIPAL AMOUNTS ONLY)

PROPRIETARY FUNDS

- 1. Debt at Beginning of Fiscal Year
- 2. Additional Debt Incurred During Year
- 3. Retirements and Repayments
- 4. Debt at End of Fiscal Year
- 5. Accreted Interest at End Of Fiscal Year
- 6. Total Debt and Accreted Interest
- 7. Current Portion P&I - Due within 1 year
- 8. Interest Paid during current fiscal year

Total Principal and Interest Payments Made by Your School - All Funds

Function	Fund		Principal (910)	Principal (920)	Interest (830)	Total (Principal +Interest)	Misc Other Uses (990)
5110	10	General Fund		56,075.47	9,192.00	65,267.47	
5110	20	Special Revenue Funds					
5110	30	Capital Projects Funds					
5110	40	Debt Service Fund	1,590,000.00		399,608.29	1,989,608.29	
5110	90	Permanent Fund					
5120	10	General Fund					
5120	20	Special Revenue Funds					
5120	30	Capital Projects Funds					
5120	40	Debt Service Fund					

Total Debt Payments - Governmental Funds			\$1,590,000.00	\$56,075.47	\$408,800.29	\$2,054,875.76	
---	--	--	-----------------------	--------------------	---------------------	-----------------------	--

Function	Fund		Principal (910)	Principal (920)	Interest (830)	Total (Principal +Interest)
5110	50	Enterprise Fund				
5110	60	Internal Service Fund				
5120	50	Enterprise Fund				
5120	60	Internal Service Fund				

Total Debt Payments - Proprietary Funds						
--	--	--	--	--	--	--

Debt Details
Governmental Funds/ Activities

Debt Category	Debt Issue Date (MM/YYYY)	Principal Amounts Only				Current Portion Due Within One Year (Principal and Interest)	Interest Paid During Fiscal Year
		Debt at Beginning of Fiscal Year	Additions	Reductions / Repayments	Debt at End of Fiscal Year		
General Obligation Bonds/Notes – CIB	03/2019		9,995,000.00		9,995,000.00	340,397.51	145,363.29
General Obligation Bonds/Notes – CIB	01/2019		9,705,000.00		9,705,000.00	449,108.61	
General Obligation Bonds/Notes – CIB	05/2013	4,940,000.00		490,000.00	4,450,000.00	625,150.00	133,380.00
General Obligation Bonds/Notes – CIB	06/2011	4,590,000.00		1,100,000.00	3,490,000.00	1,220,462.50	120,865.00
Authority Building Obligations – CIB	11/2007	229,801.00		54,638.00	175,163.00	63,251.00	7,006.00
Compensated Absences		657,692.00		11,142.00	646,550.00		
Other Post-Employment Benefits (OPEB)		1,453,093.00	82,275.00		1,535,368.00		
Net Pension Liability		37,041,000.00		605,000.00	36,436,000.00		
Totals for Debt Entered:		\$48,911,586.00	\$19,782,275.00	\$2,260,780.00	\$66,433,081.00	\$2,698,369.62	\$406,614.29

General Fund (10)

Section 1: Tuition/Purchased Services as Reported within Expenditure Detail

	Amount
Tuition Reported in General Fund Expenditures 1000-560	2,101,022.44
Purchased Services in General Fund Expenditures 1000-594 and 1000-597	6,291.74
Section 1 Total	\$2,107,314.18

Section 2: Tuition Paid to Institution Types During Fiscal Year

	Tuition Paid For Nonspecial Education	Tuition Paid For Special Education	Total
1 1306 Institutions			
2 Institutionalized Children's Programs			
3 Juveniles Incarcerated in Adult Facilities			
4 Residential Treatment Facilities			
5 Other Local Education Agencies	49,112.61	236,290.75	285,403.36
6 Brick and Mortar Charter Schools			
7 Cyber Charter Schools	426,488.37	121,073.65	547,562.02
8 Career and Technology Centers	828,725.12	131,014.00	959,739.12
9 Approved Private Schools	18,032.56	296,577.12	314,609.68
10 PA Chartered Schools for the Deaf and Blind			
11 Private Residential Rehabilitative Institutions			
12 Juvenile Detention Centers			
13 Special Program Jointures			
14 Other Tuition Not Included Elsewhere In This Section			
Section 2 Total	\$1,322,358.66	\$784,955.52	\$2,107,314.18

Food Service / Cafeteria Operations Fund (51)

3000 Operation of Non-Instructional Services

Total

100 Personnel Services – Salaries

100 Personnel Services – Salaries 246,191.00

Total Personnel Services – Salaries \$246,191.00

200 Personnel Services – Employee Benefits

210 Group Insurance – Contracted Provider 77,823.00

220 Social Security Contributions 18,268.00

230 PSERS Retirement Contributions 79,466.00

299 All Other Employee Benefits 2,900.00

Total Personnel Services – Employee Benefits \$178,457.00

500 Other Purchased Services

599 Other Miscellaneous Purchased Services 3,666.00

Total Other Purchased Services \$3,666.00

600 Supplies

610 General Supplies 20,391.00

630 Food 310,797.00

Total Supplies \$331,188.00

700 Property

740 Depreciation 16,958.00

Total Property \$16,958.00

800 Other Objects

800 Other Objects 2,661.00

Total Other Objects \$2,661.00

Total 3000 Operation of Non-Instructional Services \$779,121.00

Food Service / Cafeteria Operations Fund (51)

3100 Food Services	<u>Elementary</u>	<u>Secondary</u>	<u>Federal</u>	<u>Total</u>
100 Personnel Services – Salaries				
100 Personnel Services – Salaries				246,191.00
Total Personnel Services – Salaries				\$246,191.00
200 Personnel Services – Employee Benefits				
210 Group Insurance – Contracted Provider				77,823.00
220 Social Security Contributions				18,268.00
230 PSERS Retirement Contributions				79,466.00
299 All Other Employee Benefits				2,900.00
Total Personnel Services – Employee Benefits				\$178,457.00
500 Other Purchased Services				
599 Other Miscellaneous Purchased Services				3,666.00
Total Other Purchased Services				\$3,666.00
600 Supplies				
610 General Supplies				20,391.00
630 Food				310,797.00
Total Supplies				\$331,188.00
700 Property				
740 Depreciation				16,958.00
Total Property				\$16,958.00
800 Other Objects				
800 Other Objects				2,661.00
Total Other Objects				\$2,661.00
Total 3100 Food Services				\$779,121.00

	<u>Food Service(51)</u>	<u>Child Care Operations(52)</u>	<u>Other Enterprise(58)</u>	<u>Internal Service(60)</u>	<u>Total</u>
3000 <u>Operation of Non-Instructional Services</u>					
3100 Food Services	779,121.00				779,121.00
Total Operation of Non-Instructional Services	\$779,121.00				\$779,121.00
TOTAL ACTUAL EXPENDITURES & OTHER FINANCING USES	\$779,121.00				\$779,121.00

LEA : 116191203 Bloomsburg Area SD

Printed 1/3/2020 11:39:37 AM

Fund	School	School Number	Local Personnel	Local Nonpersonnel	State Personnel	State Nonpersonnel	Federal Personnel	Federal Nonpersonnel	Total	Explanation
10	Beaver-Main EI Sch	1610	657,365.01	166,537.82	432,827.44	107,373.07	68,931.49	2,141.10	1,435,175.93	
	Bloomsburg Area HS	1612	2,988,108.53	604,466.68	1,926,543.66	389,721.94	74,573.28	20,055.86	6,003,469.95	
	Bloomsburg Area MS	1611	1,624,159.55	639,689.90	1,624,159.55	412,431.64	177,868.36	10,043.70	4,488,352.70	
	Memorial EI Sch	1606	1,734,823.22	545,253.97	1,734,823.22	351,545.33	346,024.21	2,411.21	4,714,881.16	
	W W Evans Memorial EI Sch	1608	967,405.77	270,024.33	967,405.77	174,094.64	93,147.60	16,658.38	2,488,736.49	
Total			7,971,862.08	2,225,972.70	6,685,759.64	1,435,166.62	760,544.94	51,310.25	19,130,616.23	

<u>Nonspecial Education</u>	<u>Special Education</u>
-----------------------------	--------------------------

6000 Revenue from Local Sources

Total Revenue from Local Sources	\$17,668	\$0
Total	\$17,668	\$0
TOTAL REVENUES	\$17,668	\$0

LEA : 116191203 Bloomsburg Area SD

Printed 1/3/2020 11:39:41 AM

	<u>Nonspecial Education</u>	<u>Special Education</u>
6000 Revenue from Local Sources		
6944 Receipts from Other LEAs in Pennsylvania - Education	17,668	0
Total Revenue from Local Sources	\$17,668	\$0
TOTAL	\$17,668	\$0
TOTAL REVENUES	\$17,668	\$0