

REVISED 9/27/2019

LEA Name : Bloomsburg Area SD
Address : 728 E 5th St
Bloomsburg , PA 17815

County : Columbia
AUN Number : 116191203
LEA Type : SD

Annual Financial Report Accuracy Certification Statement

For Fiscal Year Ending

6/30/2018

Pennsylvania Department of Education

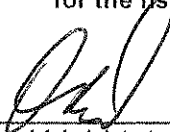
&

Office of Comptroller Operations

PDE-2056: Intermediate Unit

PDE-2057: School District, AVTS/CTC, Charter School,
and Special Program Jointure

CERTIFICATION: By signing this page I agree that the electronic data submitted is a complete and accurate statement of the financial operations and status of the local education agency for the fiscal year. It has been prepared in accordance with generally accepted accounting principles and established Commonwealth of PA reporting guidelines.



Chief School Administrator Signature

Date 9/30/19



Board Secretary Signature

Date 9/27/19

David J Marsiglio

Contact Person

(570)784-5000 Ext :

Contact Person Telephone Number

dmarsiglio@bloomsd.k12.pa.us

Contact Person E-mail Address

Contact Person Fax Number

Audit Certification
Annual Financial Report:
For Fiscal Year Ending **6/30/2018**
(Pursuant to PA School Code Section 218(b))

LEA Name : Bloomsburg Area SD
AUN Number : 116191203
County : Columbia

Audit Certification Due: 12/31/2018

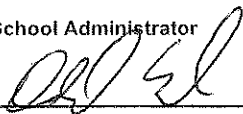
This certification is applicable to the Annual Financial Report data submitted through the Consolidated Financial Reporting System on: 2/5/19
Date

Auditing Firm:
Wagner, Dreese, Elsasser & Associates, PC
1372 North Susquehanna Trail, Suite 210
Selinsgrove , PD , 17870-

Auditor Contact Name: Michael Fuller
Auditor Phone: (717)979-2062
Auditor E-mail: mfuller@wdeapc.com

CERTIFICATION: By signing this page I agree that the financial statements of the school have been properly audited as noted above pursuant to Article XXIV, and in the auditor's professional opinion, the Annual Financial Report (PDE-2057) submitted on the date referenced is materially consistent with the audited financial statements.

Chief School Administrator


Signature

2/5/19
Date

Board Secretary


Signature

2/5/19
Date

David J Marsiglio

Contact Person

dmarsiglio@bloomsd.k12.pa.us

Contact Person E-mail Address

(570)784-5000

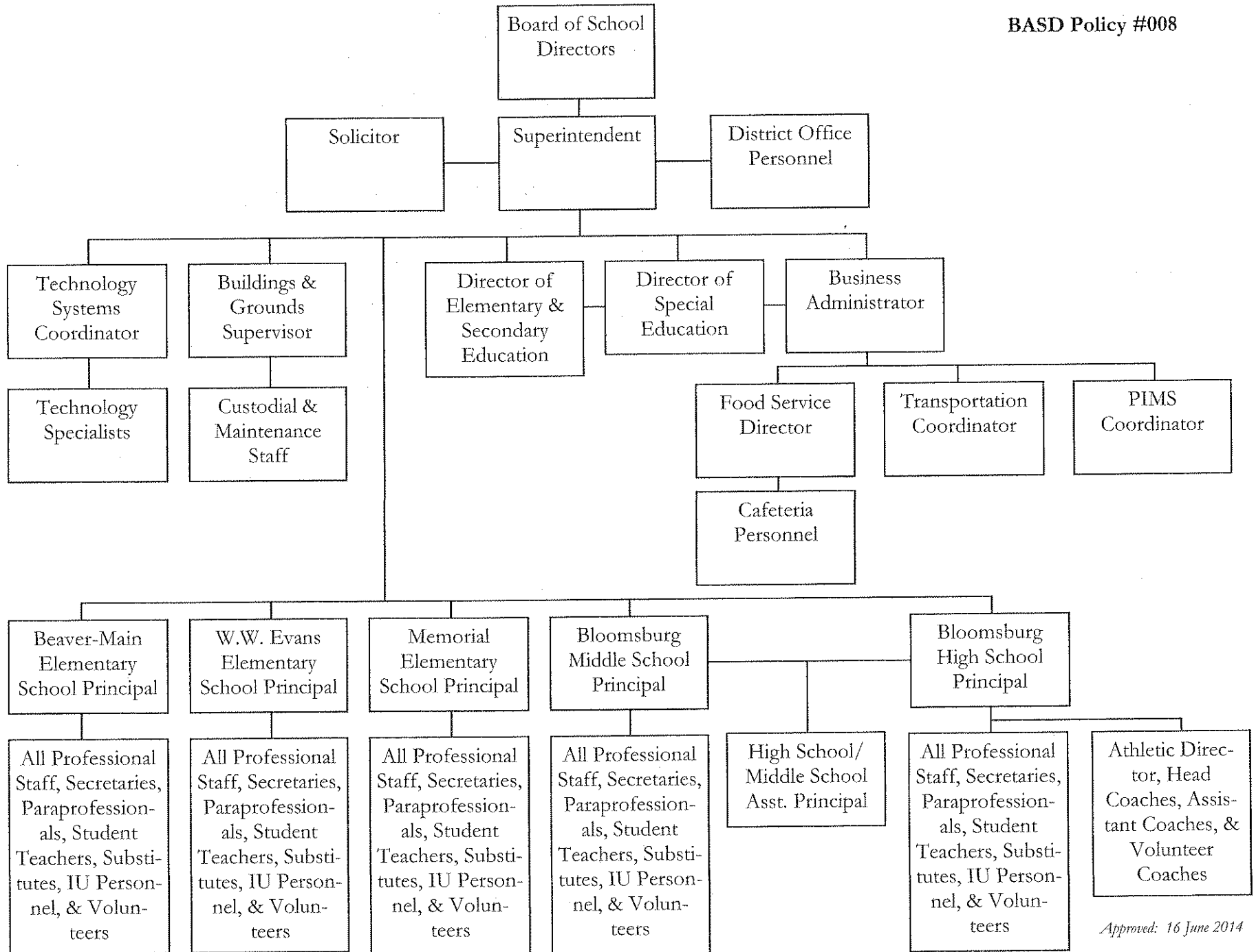
Ext :

Contact Person Telephone Number

Contact Person Fax Number

**Bloomsburg Area School District
Organization Chart**

BASD Policy #008



Approved: 16 June 2014

REVISED SUBMISSION

<u>Val Number</u>	<u>Description</u>	<u>Justification</u>
30550	Revenue Detail: Tax Revenue Data must be reported consistently for current and prior year. Correct the data or enter a justification. 6120, Current AFR Rev Detail: \$0.00 6120, Prior AFR Rev Detail: \$28,563.90	Current Per Capita was eliminated through resolution from 17-18 school year and forward. \$0.00 amount is correct.
30625	Revenue Detail: Current Tax Revenue amount cannot exceed 50% variance from prior year amount. Correct the data or enter a justification. 6120, Current AFR Rev Detail: \$0.00 6120, Prior AFR Rev Detail: \$28,563.90	Current Per Capital was eliminated through resolution from 17-18 school year and forward. \$0.00 amount is correct.
42420	Expenditure Detail: Total current year 2700-513 expenditure varies from prior year by 10%. Correct the data or enter a justification. 2700-513, AFR Exp Detail: \$977,511.41 2700-513, PY AFR Amount: \$877,734.65	Increase due to increase in contractual obligations and addition of several bus/van routes.
50450	SESS - 2350 Legal and Accounting Services: SESS Schedule amounts for Special Education vary from prior year by 40% or more. Correct the data or enter a justification. SESS Schedule 2350: \$708.00 Prior Year SESS Schedule 2350: \$339.00	Special Education Legal Service were not in demand. Amount of \$708.00 is properly recorded.
50480	SESS - 2700 Student Transportation Services: SESS Schedule amounts for Special Education vary from prior year by 40% or more. Correct the data or enter a justification. SESS Schedule 2700: \$293,526.88 Prior Year SESS Schedule 2700: \$166,914.80	Increase due to increase in contractual obligations and addition of several bus/van routes.

Amounts Expressed in Whole Dollars

	<u>General Fund</u> <u>(10)</u>	<u>Public Purpose Trust</u> <u>(27)</u>	<u>Other Compt Approved</u> <u>(28)</u>	<u>Athletic / Activity</u> <u>(29)</u>	<u>Capital Reserve (690.</u> <u>1850)</u> <u>(31)</u>
Assets And Deferred Outflows Of Resources					
Assets					
0100 Cash and Cash Equivalents	13,177,477				
0110 Investments	1,792,000				
0120 Taxes Receivable	591,495				
0130 Due From Other Funds	1,298,579				
0141 Due From Other Governments					
0142 State Revenue Receivable	631,805				
0143 Federal Revenue Receivable	2,123				
0145 Other Intergovernmental Revenue Receivable					
0146 Due from Primary Government					
0147 Due from Component Unit					
0150 Other Receivables	254,095				
0170 Inventories					
0180 Prepaid Expenses (Expenditures)					
0190 Other Current Assets					
Total Assets	\$17,747,574				
0910 Deferred Outflows of Resources					
Total Assets And Deferred Outflows Of Resources	\$17,747,574				

REVISED SUBMISSION

Amounts Expressed in Whole Dollars

	<u>Capital Reserve (1431)</u> <u>(32)</u>	<u>Other Capital Projects</u> <u>Fund</u> <u>(39)</u>	<u>Debt Service</u> <u>(40)</u>	<u>Permanent</u> <u>(90)</u>	<u>Total Governmental</u> <u>Funds</u>
Assets And Deferred Outflows Of Resources					
Assets					
0100 Cash and Cash Equivalents	1,384,406	1,332	48		14,563,263
0110 Investments					1,792,000
0120 Taxes Receivable					591,495
0130 Due From Other Funds					1,298,579
0141 Due From Other Governments					
0142 State Revenue Receivable					631,805
0143 Federal Revenue Receivable					2,123
0145 Other Intergovernmental Revenue Receivable		(1,298,271)			(1,298,271)
0146 Due from Primary Government					
0147 Due from Component Unit					
0150 Other Receivables					254,095
0170 Inventories					
0180 Prepaid Expenses (Expenditures)					
0190 Other Current Assets					
Total Assets	\$1,384,406	(\$1,296,939)	\$48		\$17,835,089
0910 Deferred Outflows of Resources					
Total Assets And Deferred Outflows Of Resources	\$1,384,406	(\$1,296,939)	\$48		\$17,835,089

REVISED SUBMISSION

Amounts Expressed in Whole Dollars	<u>General Fund</u> <u>(10)</u>	<u>Public Purpose Trust</u> <u>(27)</u>	<u>Other Compt Approved</u> <u>(28)</u>	<u>Athletic / Activity</u> <u>(29)</u>	<u>Capital Reserve (690.</u> <u>1850)</u> <u>(31)</u>
Liabilities And Deferred Inflows Of Resources And Fund Balances					
Liabilities					
0400 Due to Other Funds	48,957				
0411 Due to Other Governments					
0412 Due to Primary Government					
0413 Due to Component Unit					
0420 Accounts Payable	316,618				
0430 Contracts Payable					
0440 Current Portion of Long-Term Debt					
0450 Short-Term Payables					
0461 Accrued Salaries and Benefits	1,714,819				
0462 Payroll Deductions and Withholding	1,273,952				
0480 Unearned Revenues	9,315				
0490 Other Current Liabilities					
Total Liabilities	\$3,363,661				
0950 Deferred Inflows of Resources	591,495				
Fund Balances					
0810 Nonspendable Fund Balance					
0820 Restricted Fund Balance					
0830 Committed Fund Balance	11,910,785				
0840 Assigned Fund Balance					
0850 Unassigned Fund Balance	1,881,633				
Total Fund Balances	\$13,792,418				
Total Liabilities, Deferred Inflows Of Resources And Fund Balances	\$17,747,574				

REVISED SUBMISSION

Amounts Expressed in Whole Dollars

	<u>Capital Reserve (1431)</u> <u>(32)</u>	<u>Other Capital Projects</u> <u>Fund</u> <u>(39)</u>	<u>Debt Service</u> <u>(40)</u>	<u>Permanent</u> <u>(90)</u>	<u>Total Governmental</u> <u>Funds</u>
Liabilities And Deferred Inflows Of Resources And Fund Balances					
Liabilities					
0400 Due to Other Funds					48,957
0411 Due to Other Governments					
0412 Due to Primary Government					
0413 Due to Component Unit					
0420 Accounts Payable	121,716	1,731,565			2,169,899
0430 Contracts Payable					
0440 Current Portion of Long-Term Debt					
0450 Short-Term Payables					
0461 Accrued Salaries and Benefits					1,714,819
0462 Payroll Deductions and Withholding					1,273,952
0480 Unearned Revenues					9,315
0490 Other Current Liabilities					
Total Liabilities	\$121,716	\$1,731,565			\$5,216,942
0950 Deferred Inflows of Resources					591,495
Fund Balances					
0810 Nonspendable Fund Balance					
0820 Restricted Fund Balance			48		48
0830 Committed Fund Balance					11,910,785
0840 Assigned Fund Balance	1,262,690				1,262,690
0850 Unassigned Fund Balance		(3,028,504)			(1,146,871)
Total Fund Balances	\$1,262,690	(\$3,028,504)	\$48		\$12,026,652
Total Liabilities, Deferred Inflows Of Resources And Fund Balances	\$1,384,406	(\$1,296,939)	\$48		\$17,835,089

Amounts Expressed in Whole Dollars	<u>General Fund</u> <u>(10)</u>	<u>Public Purpose Trust</u> <u>(27)</u>	<u>Other Compt Approved</u> <u>(28)</u>	<u>Athletic / Activity</u> <u>(29)</u>	<u>Capital Reserve (690.</u> <u>1850)</u> <u>(31)</u>
Revenues					
6000 Revenue from Local Sources	14,780,566				
7000 Revenue from State Sources	10,369,224				
8000 Revenue from Federal Sources	514,150				
Total Revenues	\$25,663,940				
Expenditures					
1000 Instruction	15,026,295				
2000 Support Services	7,836,287				
3000 Operation of Non-Instructional Services	675,455				
4000 Facilities Acquisition, Construction and Improvement Services					
5110 Debt Service	63,997				
5130 Refund of Prior Year Revenues / Receipts	116,657				
Total Expenditures	\$23,718,691				
Excess (Deficiency) Of Revenues Over Expenditures	\$1,945,249				
Other Financing Sources (Uses)					
9110 Face Value of Bonds Issued					
9120 Proceeds from Refunding of Bonds					
9130 Bond Premiums					
9200 Proceeds from Extended-Term Financing					
9300 Interfund Transfers - IN					
9400 Sale of or Compensation for Loss of Fixed Assets	13,540				
9710 Transfers from Component Units					
9720 Transfers from Primary Governments					
9910 Other Financing Sources Not Listed in the 9000 Series					
9990 Insurance Recoveries					
5120 Debt Service – Refunded Bonds					
5150 Bond Discounts					
5200 Interfund Transfers – Out	2,045,208				
5300 Transfers Out to Component Units/Primary Governments					
Total Other Financing Sources (Uses)	(\$2,031,668)				

REVISED SUBMISSION

Amounts Expressed in Whole Dollars	<u>Capital Reserve (1431)</u> <u>(32)</u>	<u>Other Capital Projects</u> <u>Fund</u> <u>(39)</u>	<u>Debt Service</u> <u>(40)</u>	<u>Permanent</u> <u>(90)</u>	<u>Total Governmental</u> <u>Funds</u>
Revenues					
6000 Revenue from Local Sources	16,258	9	18		14,796,851
7000 Revenue from State Sources					10,369,224
8000 Revenue from Federal Sources					514,150
Total Revenues	\$16,258	\$9	\$18		\$25,680,225
Expenditures					
1000 Instruction					15,026,295
2000 Support Services	147,474		950		7,984,711
3000 Operation of Non-Instructional Services					675,455
4000 Facilities Acquisition, Construction and Improvement Services	227,282	3,029,836			3,257,118
5110 Debt Service			1,843,195		1,907,192
5130 Refund of Prior Year Revenues / Receipts					116,657
Total Expenditures	\$374,756	\$3,029,836	\$1,844,145		\$28,967,428
Excess (Deficiency) Of Revenues Over Expenditures	(\$358,498)	(\$3,029,827)	(\$1,844,127)		(\$3,287,203)
Other Financing Sources (Uses)					
9110 Face Value of Bonds Issued					
9120 Proceeds from Refunding of Bonds					
9130 Bond Premiums					
9200 Proceeds from Extended-Term Financing					
9300 Interfund Transfers - IN	200,000		1,844,145		2,044,145
9400 Sale of or Compensation for Loss of Fixed Assets					13,540
9710 Transfers from Component Units					
9720 Transfers from Primary Governments					
9910 Other Financing Sources Not Listed in the 9000 Series					
9990 Insurance Recoveries					
5120 Debt Service – Refunded Bonds					
5150 Bond Discounts					
5200 Interfund Transfers – Out					2,045,208
5300 Transfers Out to Component Units/Primary Governments					
Total Other Financing Sources (Uses)	\$200,000		\$1,844,145		\$12,477

REVISED SUBMISSION

Amounts Expressed in Whole Dollars

	<u>General Fund</u> <u>(10)</u>	<u>Public Purpose Trust</u> <u>(27)</u>	<u>Other Compt Approved</u> <u>(28)</u>	<u>Athletic / Activity</u> <u>(29)</u>	<u>Capital Reserve</u> <u>(690.</u> <u>1850)</u> <u>(31)</u>
Special And Extraordinary Items					
9920 Special Items – Gains					
9930 Extraordinary Items – Gains					
5520 Special Items – Losses					
5530 Extraordinary Items – Losses					
Net Change In Fund Balances	(\$86,419)				
Fund Balance					
0001 Fund Balance - Beginning of Fiscal Year	13,878,837				
Fund Balance - End Of Year	\$13,792,418				

REVISED SUBMISSION

Amounts Expressed in Whole Dollars	<u>Capital Reserve (1431)</u> <u>(32)</u>	<u>Other Capital Projects</u> <u>Fund</u> <u>(39)</u>	<u>Debt Service</u> <u>(40)</u>	<u>Permanent</u> <u>(90)</u>	<u>Total Governmental</u> <u>Funds</u>
Special And Extraordinary Items					
9920 Special Items – Gains					
9930 Extraordinary Items – Gains					
5520 Special Items – Losses					
5530 Extraordinary Items – Losses					
Net Change In Fund Balances	(\$158,498)	(\$3,029,827)	\$18		(\$3,274,726)
Fund Balance					
0001 Fund Balance - Beginning of Fiscal Year	1,421,188	1,323	30		15,301,378
Fund Balance - End Of Year	\$1,262,690	(\$3,028,504)	\$48		\$12,026,652

REVISED SUBMISSION

Amounts Expressed in Whole Dollars

	<u>Food Service</u> <u>(51)</u>	<u>Child Care</u> <u>Operations</u> <u>(52)</u>	<u>Other Enterprise</u> <u>(58)</u>	<u>TOTAL</u>	<u>Internal Service</u> <u>(60)</u>
Assets And Deferred Outflows Of Resources					
Current Assets					
0100 Cash and Cash Equivalents	248,464			248,464	
0110 Investments					
0130 Due From Other Funds	48,957			48,957	
0141 Due From Other Governments	11,129			11,129	
0142 State Revenue Receivable					
0143 Federal Revenue Receivable					
0146 Due from Primary Government					
0147 Due from Component Unit					
0150 Other Receivables					
0170 Inventories	23,169			23,169	
0180 Prepaid Expenses (Expenditures)					
0190 Other Current Assets					
Total Current Assets	\$331,719			\$331,719	
Noncurrent Assets					
0211 Land					
0212 Site Improvements (Net)					
0220 Buildings and Building Improvements (Net)	5,278			5,278	
0230 Machinery, Equipment and Furniture (Net)	54,298			54,298	
0250 Construction in Progress					
0260 Long Term Prepayments					
0290 Other Noncurrent Assets					
Total Noncurrent Assets	\$59,576			\$59,576	
0910 Deferred Outflows of Resources					
Total Assets And Deferred Outflows Of Resources	\$391,295			\$391,295	

Amounts Expressed in Whole Dollars	<u>Food Service</u> <u>(51)</u>	<u>Child Care</u> <u>Operations</u> <u>(52)</u>	<u>Other Enterprise</u> <u>(58)</u>	<u>TOTAL</u>	<u>Internal Service</u> <u>(60)</u>
Liabilities And Deferred Inflows Of Resources And Net Position					
Current Liabilities					
0400 Due to Other Funds	308			308	
0411 Due to Other Governments					
0413 Due to Component Unit					
0420 Accounts Payable					
0430 Contracts Payable					
0440 Current Portion of Long-Term Debt					
0450 Short-Term Payables					
0461 Accrued Salaries and Benefits	41,204			41,204	
0462 Payroll Deductions and Withholding					
0480 Unearned Revenues	7,682			7,682	
0490 Other Current Liabilities					
Total Current Liabilities	\$49,194			\$49,194	
Noncurrent Liabilities					
0510 Bonds Payable					
0520 Extended-Term Financing Agreements Payable					
0530 Lease-Purchase Obligations					
0540 Accumulated Compensated Absences					
0550 Authority Lease Obligations					
0560 Other Post-Employment Benefits (OPEB)					
0570 Net Pension Liability					
0599 Other Noncurrent Liabilities					
Total Noncurrent Liabilities					
Total Liabilities	\$49,194			\$49,194	
0950 Deferred Inflows of Resources					
Net Position					
0791 Net Investment in Capital Assets	59,576			59,576	
0008 Restricted Net Position (0792 – 0798)					
0799 Unrestricted Net Position	282,525			282,525	
Total Net Position	\$342,101			\$342,101	
Total Liabilities And Deferred Inflows Of Resources And Net Position	\$391,295			\$391,295	

REVISED SUBMISSION

Amounts Expressed in Whole Dollars	<u>Food Service</u> <u>(51)</u>	<u>Child Care Operations</u> <u>(52)</u>	<u>Other Enterprise</u> <u>(58)</u>	<u>TOTAL</u>	<u>Internal Service</u> <u>(60)</u>
Operating Revenues					
6600 Food Service Revenue	247,246			247,246	
0071 Charges for Services					
0072 Other Operating Revenue					
Total Operating Revenues	\$247,246			\$247,246	
Operating Expenses					
100 Personnel Services – Salaries	243,637			243,637	
200 Personnel Services – Employee Benefits	174,750			174,750	
300 Purchased Professional and Technical Services					
400 Purchased Property Services	1,681			1,681	
500 Other Purchased Services					
600 Supplies	343,162			343,162	
740 Depreciation	11,209			11,209	
810 Dues and Fees					
890 Miscellaneous Expenditures	6,449			6,449	
Total Operating Expenses	\$780,888			\$780,888	
Operating Income (Loss)	(\$533,642)			(\$533,642)	
Non Operating Revenues (Expenses)					
6500 Earnings on Investments	127			127	
6920 Contributions and Donations from Private Sources					
6930 Gains or Losses on Sale of Fixed Assets	2,113			2,113	
6991 Refunds of a Prior Year Expenditure					
7000 Revenue from State Sources	74,785			74,785	
8000 Revenue from Federal Sources	472,525			472,525	
820 Claims and Judgments Against the LEA					
830 Interest					
TOTAL Non Operating Revenues (Expenses)	\$549,550			\$549,550	
Income (Loss) Before Contributions And Transfers	\$15,908			\$15,908	

REVISED SUBMISSION

Amounts Expressed in Whole Dollars	<u>Food Service</u> <u>(51)</u>	<u>Child Care Operations</u> <u>(52)</u>	<u>Other Enterprise</u> <u>(58)</u>	<u>TOTAL</u>	<u>Internal Service</u> <u>(60)</u>
Contributions, Transfers, and Special and Extraordinary Items					
5200 Interfund Transfers – Out					
5300 Transfers Out to Component Units/Primary Governments					
5520 Special Items – Losses					
5530 Extraordinary Items – Losses					
9300 Interfund Transfers - IN	1,063			1,063	
9500 Capital Contributions					
9700 Transfers IN From Component Units/Primary Governments					
9920 Special Items – Gains					
9930 Extraordinary Items – Gains					
Change In Net Position	\$16,971			\$16,971	
0002 Net Position - Beginning of Fiscal Year	325,130			325,130	
0003 Accounting Changes / Residual Equity Transfers					
Net Position - End Of Year	\$342,101			\$342,101	

Amounts Expressed in Whole Dollars	<u>Food Service</u> <u>(51)</u>	<u>Child Care Operations</u> <u>(52)</u>	<u>Other Enterprise</u> <u>(58)</u>	<u>TOTAL</u>	<u>Internal Service(60)</u>
Cash Flows From Operating Activities					
0011 Cash Receipts From Users	243,450			243,450	
0012 Cash Receipts From Assessments Made to Other Funds					
0013 Cash Receipts From Earnings on Investments					
0014 Cash Receipts From Other Operating Revenue					
0015 Cash Payments To Employees For Services	421,775			421,775	
0016 Cash Payments For Insurance Claims					
0017 Cash Payments To Suppliers For Goods and Services	281,666			281,666	
0018 Cash Payments For Other Operating Expenses	6,449			6,449	
Net Cash Provided By (Used For) Operating Activities	(\$466,440)			(\$466,440)	
Cash Flows From Non-Capital Financing Activities					
0021 Receipts From Local Sources - 6000					
0022 Receipts From State Sources - 7000	74,088			74,088	
0023 Receipts From Federal Sources -8000	421,280			421,280	
0024 Notes and Loans Received (Repaid)					
0025 Interest Paid on Notes/Loans - 5100-830					
0026 Operating Transfers In (Out)/Residual Equity Trans	1,063			1,063	
0027 Operating Transfers In (Out) Primary Government / Comp Unit					
0028 Receipts From Refund of Prior Year Expenditures - 6991					
0029 Special and Extraordinary Gains (losses)					
0030 Receipts from Insurance Recoveries -9990					
Net Cash Prov By (Used for) Non-Capital Financing Activities	\$496,431			\$496,431	
Cash Flows From Capital and Related Financing Activities					
0031 Payments For Fac Acq, Const, and Imp - 4000	(5,507)			(5,507)	
0032 Gain / (Loss) on Sale of Fixed Assets - 6930	2,113			2,113	
0033 Proceeds From Extended Term Financing - 9200					
0034 Principal Paid on Financing Agreements					
0035 Interest Paid on Financing Agreements - 5100-830					
0036 (Inc) Dec in Contributed Capital					
Net Cash Prov By (Used for) Capital and Related Financing Activities	(\$3,394)			(\$3,394)	
Cash Flows From Investing Activities					
0041 Earnings on Investments - 6500	127			127	
0042 Purchase of Inv Securities / Deposits to Inv Pools					
0043 Receipts From Investment Pool Withdrawals					
0044 Proceeds from Sale and Maturity of Inv Securities					

LEA : 116191203 Bloomsburg Area SD

Printed 1/29/2020 8:28:38 AM

REVISED SUBMISSION

Page - 2 of 4

0045 Loans Received (Paid)

Net Cash Prov By (Used for) Investing Activities	\$127	\$127
---	--------------	--------------

	<u>Food Service</u> (51)	<u>Child Care Operations</u> (52)	<u>Other Enterprise</u> (58)	<u>TOTAL</u>	<u>Internal Service</u> (60)
Net Increase (Decrease) in Cash Flows	26,724			26,724	
0004 Cash and Cash Equivalents Beginning of Year	221,740			221,740	
Cash and Cash Equivalents at Year End	\$248,464			\$248,464	

Reconciliation of Operating Income (Loss) To Net Cash Provided by (Used For) Operating Activities

0005 Operating Income (Loss) per REP	(533,642)			(533,642)	
Adjustments					
0051 Depreciation and Net Amortization	11,209			11,209	
0052 Provision for Uncollectible Accounts					
0053 Other Adjustments					
Effect of Changes in Assets, Liabilities, Deferred Outflows and Deferred Inflows					
0054 (Inc) Dec In Accounts Receivable (0120-0150)	333			333	
0055 Advances to Other Funds (0160)					
0056 (Inc) Dec in Inventories (0170)	2,117			2,117	
0057 (Inc) Dec in Prepaid Expenses (0180)					
0058 (Inc) Dec in Other Current or Noncurrent Assets	60,419			60,419	
0064 Deferred Outflows (0910)					
0059 Inc (Dec) in Accounts Payable (0400-0450)					
0060 Inc (Dec) in Accrued Salaries/Benefits (0461)	(3,388)			(3,388)	
0065 Inc (Dec) in Net Pension Liabilities (0570)					
0066 Inc (Dec) in Other Postemp Benefit Oblig (0560)					
0061 Inc (Dec) in Payroll Deductions/Withholding (0462)					
0062 Inc (Dec) in Unearned Revenue (0480)	(3,796)			(3,796)	
0063 Inc (Dec) in Other Current or Noncurrent Liabilities	308			308	
0067 Deferred Inflows (0950)					
Total Adjustments	\$67,202			\$67,202	
Cash Provided By (Used for) Total	(\$466,440)			(\$466,440)	

COMBINED STATEMENT OF CASH FLOWS
SCHEDULE OF NONCASH INVESTING, CAPITAL, AND FINANCING ACTIVITIES

Explanation of Transaction and Balance Sheet Effect	Amount
Total	

LEA : 116191203 Bloomsburg Area SD

Printed 1/29/2020 8:28:40 AM

REVISED SUBMISSION

Page - 1 of 4

Amounts Expressed in Whole Dollars

	<u>Private Purpose Trust</u> <u>(71)</u>	<u>Investment Trust</u> <u>(72)</u>	<u>Pension Trust</u> <u>(73)</u>	<u>Activity</u> <u>(81)</u>
Assets And Deferred Outflows Of Resources				
Assets				
0100 Cash and Cash Equivalents	288,907			154,397
0110 Investments				
0130 Due From Other Funds				
0147 Due from Component Unit				
0150 Other Receivables				
0170 Inventories				
0180 Prepaid Expenses (Expenditures)				
0190 Other Current Assets				
0220 Buildings and Building Improvements (Net)				
0230 Machinery, Equipment and Furniture (Net)				
Total Assets	\$288,907			\$154,397
0910 Deferred Outflows of Resources				
Total Assets And Deferred Outflows Of Resources	\$288,907			\$154,397

LEA : 116191203 Bloomsburg Area SD

Printed 1/29/2020 8:28:40 AM

REVISED SUBMISSION

Amounts Expressed in Whole Dollars

Assets And Deferred Outflows Of Resources

Assets

	<u>Other Agency</u> <u>(89)</u>	<u>Discrete Component Units</u> <u>(98)</u>	<u>Discrete Component Units</u> <u>(99)</u>	<u>Total Fiduciary Funds</u>
0100 Cash and Cash Equivalents				443,304
0110 Investments				
0130 Due From Other Funds				
0147 Due from Component Unit				
0150 Other Receivables				
0170 Inventories				
0180 Prepaid Expenses (Expenditures)				
0190 Other Current Assets				
0220 Buildings and Building Improvements (Net)				
0230 Machinery, Equipment and Furniture (Net)				

Total Assets				\$443,304
---------------------	--	--	--	------------------

0910 Deferred Outflows of Resources

Total Assets And Deferred Outflows Of Resources				\$443,304
--	--	--	--	------------------

LEA : 116191203 Bloomsburg Area SD

Printed 1/29/2020 8:28:40 AM

REVISED SUBMISSION

Amounts Expressed in Whole Dollars

	<u>Private Purpose Trust</u> (71)	<u>Investment Trust</u> (72)	<u>Pension Trust</u> (73)	<u>Activity</u> (81)
Liabilities, Deferred Inflows Of Resources And Net Position				
Liabilities				
0400 Due to Other Funds				
0411 Due to Other Governments				
0412 Due to Primary Government				
0413 Due to Component Unit				
0420 Accounts Payable				154,397
0430 Contracts Payable				
0450 Short-Term Payables				
0461 Accrued Salaries and Benefits				
0462 Payroll Deductions and Withholding				
0480 Unearned Revenues				
0490 Other Current Liabilities				
Total Liabilities				\$154,397
0950 Deferred Inflows of Resources				
Net Position				
0791 Net Investment in Capital Assets				
0009 Restricted Net Position (0792 – 0798)	288,907			
0799 Unrestricted Net Position				
Total Net Position	\$288,907			
Total Liabilities, Deferred Inflows Of Resources And Net Position	\$288,907			\$154,397

LEA : 116191203 Bloomsburg Area SD

Printed 1/29/2020 8:28:40 AM

REVISED SUBMISSION

Amounts Expressed in Whole Dollars

<u>Other Agency</u>	<u>Discrete Component Units</u>	<u>Discrete Component Units</u>	<u>Total Fiduciary Funds</u>
(89)	(98)	(99)	

Liabilities, Deferred Inflows Of Resources And Net Position

Liabilities

0400 Due to Other Funds			
0411 Due to Other Governments			
0412 Due to Primary Government			
0413 Due to Component Unit			
0420 Accounts Payable			154,397
0430 Contracts Payable			
0450 Short-Term Payables			
0461 Accrued Salaries and Benefits			
0462 Payroll Deductions and Withholding			
0480 Unearned Revenues			
0490 Other Current Liabilities			

Total Liabilities			\$154,397
--------------------------	--	--	------------------

0950 Deferred Inflows of Resources

Net Position

0791 Net Investment in Capital Assets			
0009 Restricted Net Position (0792 – 0798)			288,907
0799 Unrestricted Net Position			

Total Net Position			\$288,907
---------------------------	--	--	------------------

Total Liabilities, Deferred Inflows Of Resources And Net Position			\$443,304
--	--	--	------------------

Amounts Expressed in Whole Dollars	<u>Private Purpose Trust</u> <u>(71)</u>	<u>Investment Trust</u> <u>(72)</u>	<u>Pension Trust</u> <u>(73)</u>	<u>Discrete Component</u> <u>Units</u> <u>(98)</u>	<u>Discrete Component</u> <u>Units</u> <u>(99)</u>	<u>Total Fiduciary</u> <u>Funds</u>
Additions						
0091 Gifts and Contributions	40,510					40,510
0092 Other Additions	473					473
Deductions						
0093 Scholarships Awarded	25,592					25,592
0094 Other Deductions						
Change In Net Position	\$15,391					\$15,391
0006 Net Position – Beginning of Fiscal Year	273,516					273,516
0007 Net Position Held in Trust for Pension Benefits						
Net Position - End of Fiscal Year	\$288,907					\$288,907

REVISED SUBMISSION

	<u>Revenue Reported In Current Year</u>	<u>Current Year Tax Accrual</u>	<u>Prior Year Tax Accrual</u>	<u>Taxes Collected In Current Year</u>
<u>Revenue from Local Sources</u>				
6111 Current Real Estate Taxes	9,965,548.34			9,965,548.34
6112 Interim Real Estate Taxes	33,640.31			33,640.31
6113 Public Utility Realty Taxes	13,442.27			13,442.27
6114 Payments in Lieu of Current Taxes - State / Local	113,790.02			113,790.02
6143 Current Act 511 Local Services Taxes	52,781.40			52,781.40
6151 Current Act 511 Earned Income Taxes	3,082,398.41			3,082,398.41
6153 Current Act 511 Real Estate Transfer Taxes	257,748.56			257,748.56
6411 Delinquent Real Estate Taxes	535,315.96			535,315.96
6420 Delinquent Per Capita Taxes, Section 679	2,741.76			2,741.76
6440 Delinquent Local Enabling Taxes - Flat Rate Assessments	2,741.74			2,741.74
6500 Earnings on Investments	231,785.99			
6700 Revenues from LEA Activities	61,208.58			
6832 Federal IDEA Revenue Received as Pass Through	251,947.06			
6910 Rentals	9,442.50			
6920 Contributions and Donations from Private Sources	103,646.00			
6941 Regular Day School Tuition	5,209.38			
6944 Receipts from Other LEAs in Pennsylvania - Education	32,085.06			
6991 Refunds of a Prior Year Expenditure	7,974.06			
6992 Energy Efficiency Revenues and Incentives	2,173.08			
6999 Other Revenues Not Specified Above	14,945.23			
TOTAL Revenue from Local Sources	\$14,780,565.71			\$14,060,148.77

REVISED SUBMISSION

Revenue Reported
In Current Year

Revenue from State Sources

7110 Basic Education Funding	5,807,698.09		
7160 Tuition for Orphans Subsidy	36,281.61		
7240 Driver Education - Student	2,170.00		
7250 Migratory Children	80.00		
7271 Special Education funds for School-Aged Pupils	986,925.95		
7311 Pupil Transportation Subsidy	386,505.01		
7312 Nonpublic and Charter School Pupil Transportation Subsidy	16,170.00		
7320 Rental and Sinking Fund Payments / Building Reimbursement Subsidy	383,531.53		
7330 Health Services (Medical, Dental, Nurse, Act 25)	30,309.27		
7340 State Property Tax Reduction Allocation	488,286.43		
7505 Ready to Learn Block Grant	234,078.00		
7810 State Share of Social Security and Medicare Taxes	348,498.55		
7820 State Share of Retirement Contributions	1,648,689.09		
TOTAL Revenue from State Sources	\$10,369,223.53		

REVISED SUBMISSION

Revenue Reported
In Current Year

Revenue from Federal Sources

8514 NCLB, Title I - Improving the Academic Achievement of the Disadvantaged	385,432.00		
8515 NCLB, Title II - Preparing, Training and Recruiting High Quality Teachers and Principals	57,991.00		
8517 NCLB, Title IV - 21St Century Schools	10,000.00		
8810 School-Based Access Medicaid Reimbursement Program (SBAP) Reimbursements (Access)	52,003.55		
8820 Medical Assistance Reimbursement for Administrative Claiming (Quarterly) Program	8,723.12		
TOTAL Revenue from Federal Sources	\$514,149.67		

REVISED SUBMISSION

Revenue Reported
In Current Year

Other Financing Sources

9400 Sale of or Compensation for Loss of Fixed Assets	13,539.99	
TOTAL Other Financing Sources	\$13,539.99	
TOTAL FROM ALL SOURCES	\$25,677,478.90	\$14,060,148.77

REVISED SUBMISSION

Revenue from Local Sources	14,780,565.71
Revenue from State Sources	10,369,223.53
Revenue from Federal Sources	514,149.67
Other Financing Sources	13,539.99
TOTAL FROM ALL SOURCES	\$25,677,478.90

General Fund (10)

	<u>Total</u>
1000 Instruction	
100 Personnel Services – Salaries	
100 Personnel Services – Salaries	7,510,584.71
Total Personnel Services – Salaries	\$7,510,584.71
200 Personnel Services – Employee Benefits	
210 Group Insurance – Contracted Provider	1,956,755.44
220 Social Security Contributions	556,318.14
230 PSERS Retirement Contributions	2,405,318.58
250 Unemployment Compensation	29,333.05
260 Workers' Compensation	97,940.00
Total Personnel Services – Employee Benefits	\$5,045,665.21
300 Purchased Professional and Technical Services	
322 Professional Educational Services – Ius	190,649.89
324 Professional Educational Services – Employee Training and Development Services	10,379.50
330 Other Professional Services	68,553.53
Total Purchased Professional and Technical Services	\$269,582.92
400 Purchased Property Services	
430 Repairs and Maintenance Services	4,995.15
440 Rentals	36,370.89
Total Purchased Property Services	\$41,366.04
500 Other Purchased Services	
510 Student Transportation Services	25,962.47
550 Printing and Binding	2,504.70
561 Tuition To Other School Districts Within the State	212,726.92
562 Tuition To Pennsylvania Charter Schools	399,625.09
564 Tuition To Career and Technology Centers	846,666.00
567 Tuition To Approved Private Schools (APS) and PA Chartered Schools for the Deaf and Blind	8,918.93
568 Tuition To Private Residential Rehabilitative Institutions (PRRI) [In-State] and Detention Centers	14,558.23
569 Tuition – Other	319,290.52
580 Travel	3,731.97
594 IU Payment By Withholding for Institutionalized Children's Programs – Special Classes	107.91
599 Other Miscellaneous Purchased Services	750.00
Total Other Purchased Services	\$1,834,842.74
600 Supplies	
610 General Supplies	208,261.72
620 Energy	359.87
630 Food	858.26
640 Books and Periodicals	28,722.41
650 Supplies & Fees – Technology Related	22,202.26
Total Supplies	\$260,404.52
700 Property	
752 Capital Equipment – Original and Additional	45,862.62
Total Property	\$45,862.62

REVISED SUBMISSION

General Fund (10)

1000 Instruction	<u>Total</u>
800 Other Objects	
810 Dues and Fees	3,438.75
890 Miscellaneous Expenditures	14,547.03
Total Other Objects	\$17,985.78
Total 1000 Instruction	\$15,026,294.54

General Fund (10)

1100 Regular Programs – Elementary / Secondary

	<u>Elementary</u>	<u>Secondary</u>	<u>Federal</u>	<u>Total</u>
100 Personnel Services – Salaries				
100 Personnel Services – Salaries	3,221,334.81	2,518,335.57	352,886.00	6,092,556.38
Total Personnel Services – Salaries	\$3,221,334.81	\$2,518,335.57	\$352,886.00	\$6,092,556.38
200 Personnel Services – Employee Benefits				
210 Group Insurance – Contracted Provider	788,800.33	652,706.17	127,949.94	1,569,456.44
220 Social Security Contributions	242,006.49	185,902.94	22,521.59	450,431.02
230 PSERS Retirement Contributions	1,103,514.25	812,980.47	30,220.64	1,946,715.36
250 Unemployment Compensation	13,786.53	15,546.52		29,333.05
260 Workers' Compensation	46,031.80	51,908.20		97,940.00
Total Personnel Services – Employee Benefits	\$2,194,139.40	\$1,719,044.30	\$180,692.17	\$4,093,875.87
300 Purchased Professional and Technical Services				
322 Professional Educational Services – lus	88.26	43.15		131.41
324 Professional Educational Services – Employee Training and Development Services	1,440.75	3,116.25		4,557.00
330 Other Professional Services		19,825.00		19,825.00
Total Purchased Professional and Technical Services	\$1,529.01	\$22,984.40		\$24,513.41
400 Purchased Property Services				
430 Repairs and Maintenance Services	1,724.20	3,243.66		4,967.86
440 Rentals	24,065.05	12,305.84		36,370.89
Total Purchased Property Services	\$25,789.25	\$15,549.50		\$41,338.75
500 Other Purchased Services				
510 Student Transportation Services	19,898.17	3,636.26		23,534.43
550 Printing and Binding	693.72	1,810.98		2,504.70
562 Tuition To Pennsylvania Charter Schools	45,883.72	253,479.61		299,363.33
568 Tuition To Private Residential Rehabilitative Institutions (PRRI) [In-State] and Detention Centers	3,262.26	3,678.72		6,940.98
580 Travel	423.41	295.70		719.11
599 Other Miscellaneous Purchased Services	247.50	502.50		750.00
Total Other Purchased Services	\$70,408.78	\$263,403.77		\$333,812.55
600 Supplies				
610 General Supplies	97,304.92	64,189.28		161,494.20
630 Food	660.26	78.00		738.26
640 Books and Periodicals	13,345.22	13,673.03		27,018.25
650 Supplies & Fees – Technology Related	11,141.07	9,341.38		20,482.45
Total Supplies	\$122,451.47	\$87,281.69		\$209,733.16
700 Property				
752 Capital Equipment – Original and Additional	10,071.03	6,705.84		16,776.87
Total Property	\$10,071.03	\$6,705.84		\$16,776.87
800 Other Objects				
810 Dues and Fees	1,166.95	1,180.80		2,347.75
890 Miscellaneous Expenditures	8,439.66	6,027.37		14,467.03
Total Other Objects	\$9,606.61	\$7,208.17		\$16,814.78
Total 1100 Regular Programs – Elementary / Secondary	\$5,655,330.36	\$4,640,513.24	\$533,578.17	\$10,829,421.77

General Fund (10)

1110 Regular Programs

100 Personnel Services – Salaries

	<u>Elementary</u>	<u>Secondary</u>	<u>Federal</u>	<u>Total</u>
100 Personnel Services – Salaries	3,221,334.81	2,518,335.57		5,739,670.38

Total Personnel Services – Salaries	\$3,221,334.81	\$2,518,335.57		\$5,739,670.38
--	-----------------------	-----------------------	--	-----------------------

200 Personnel Services – Employee Benefits

210 Group Insurance – Contracted Provider	788,800.33	652,706.17		1,441,506.50
220 Social Security Contributions	242,006.49	185,902.94		427,909.43
230 PSERS Retirement Contributions	1,103,514.25	812,980.47		1,916,494.72
250 Unemployment Compensation	13,786.53	15,546.52		29,333.05
260 Workers' Compensation	46,031.80	51,908.20		97,940.00

Total Personnel Services – Employee Benefits	\$2,194,139.40	\$1,719,044.30		\$3,913,183.70
---	-----------------------	-----------------------	--	-----------------------

300 Purchased Professional and Technical Services

322 Professional Educational Services – lus	88.26	43.15		131.41
324 Professional Educational Services – Employee Training and Development Services	1,440.75	3,116.25		4,557.00
330 Other Professional Services		19,825.00		19,825.00

Total Purchased Professional and Technical Services	\$1,529.01	\$22,984.40		\$24,513.41
--	-------------------	--------------------	--	--------------------

400 Purchased Property Services

430 Repairs and Maintenance Services	1,724.20	3,243.66		4,967.86
440 Rentals	24,065.05	12,305.84		36,370.89

Total Purchased Property Services	\$25,789.25	\$15,549.50		\$41,338.75
--	--------------------	--------------------	--	--------------------

500 Other Purchased Services

510 Student Transportation Services	19,898.17	3,636.26		23,534.43
550 Printing and Binding	693.72	1,810.98		2,504.70
562 Tuition To Pennsylvania Charter Schools	45,883.72	253,479.61		299,363.33
568 Tuition To Private Residential Rehabilitative Institutions (PRRI) [In-State] and Detention Centers	3,262.26	3,678.72		6,940.98
580 Travel	423.41	295.70		719.11
599 Other Miscellaneous Purchased Services	247.50	502.50		750.00

Total Other Purchased Services	\$70,408.78	\$263,403.77		\$333,812.55
---------------------------------------	--------------------	---------------------	--	---------------------

600 Supplies

610 General Supplies	97,304.92	64,189.28		161,494.20
630 Food	660.26	78.00		738.26
640 Books and Periodicals	13,345.22	13,673.03		27,018.25
650 Supplies & Fees – Technology Related	11,141.07	9,341.38		20,482.45

Total Supplies	\$122,451.47	\$87,281.69		\$209,733.16
-----------------------	---------------------	--------------------	--	---------------------

700 Property

752 Capital Equipment – Original and Additional	10,071.03	6,705.84		16,776.87
---	-----------	----------	--	-----------

Total Property	\$10,071.03	\$6,705.84		\$16,776.87
-----------------------	--------------------	-------------------	--	--------------------

800 Other Objects

810 Dues and Fees	1,166.95	1,180.80		2,347.75
890 Miscellaneous Expenditures	8,439.66	6,027.37		14,467.03

Total Other Objects	\$9,606.61	\$7,208.17		\$16,814.78
----------------------------	-------------------	-------------------	--	--------------------

Total 1110 Regular Programs	\$5,655,330.36	\$4,640,513.24		\$10,295,843.60
------------------------------------	-----------------------	-----------------------	--	------------------------

General Fund (10)

1190 Federally-Funded Regular Programs

100 Personnel Services – Salaries

	<u>Elementary</u>	<u>Secondary</u>	<u>Federal</u>	<u>Total</u>
100 Personnel Services – Salaries			352,886.00	352,886.00
Total Personnel Services – Salaries			\$352,886.00	\$352,886.00
200 Personnel Services – Employee Benefits				
210 Group Insurance – Contracted Provider			127,949.94	127,949.94
220 Social Security Contributions			22,521.59	22,521.59
230 PSERS Retirement Contributions			30,220.64	30,220.64
Total Personnel Services – Employee Benefits			\$180,692.17	\$180,692.17
Total 1190 Federally-Funded Regular Programs			\$533,578.17	\$533,578.17

Total Personnel Services – Salaries

200 Personnel Services – Employee Benefits

General Fund (10)

1200 Special Programs – Elementary / Secondary

	<u>Elementary</u>	<u>Secondary</u>	<u>Federal</u>	<u>Total</u>
100 Personnel Services – Salaries				
100 Personnel Services – Salaries	530,666.03	333,147.83	212,512.99	1,076,326.85
Total Personnel Services – Salaries	\$530,666.03	\$333,147.83	\$212,512.99	\$1,076,326.85
200 Personnel Services – Employee Benefits				
210 Group Insurance – Contracted Provider	152,877.99	81,441.61	74,866.89	309,186.49
220 Social Security Contributions	43,861.89	27,117.72	9,245.54	80,225.15
230 PSERS Retirement Contributions	189,971.86	118,592.52	39,599.18	348,163.56
Total Personnel Services – Employee Benefits	\$386,711.74	\$227,151.85	\$123,711.61	\$737,575.20
300 Purchased Professional and Technical Services				
322 Professional Educational Services – lus	25,931.91	150,158.46		176,090.37
324 Professional Educational Services – Employee Training and Development Services	2,096.75	2,705.75	450.00	5,252.50
330 Other Professional Services	1,696.71	1,064.32	45,967.50	48,728.53
Total Purchased Professional and Technical Services	\$29,725.37	\$153,928.53	\$46,417.50	\$230,071.40
500 Other Purchased Services				
510 Student Transportation Services		2,107.52		2,107.52
561 Tuition To Other School Districts Within the State	118,713.06	10,457.05		129,170.11
562 Tuition To Pennsylvania Charter Schools	11,382.97	88,878.79		100,261.76
567 Tuition To Approved Private Schools (APS) and PA Chartered Schools for the Deaf and Blind	4,191.90	4,727.03		8,918.93
569 Tuition – Other	147,601.72	171,128.80		318,730.52
580 Travel	2,081.47	306.53		2,388.00
594 IU Payment By Withholding for Institutionalized Children’s Programs – Special Classes	50.72	57.19		107.91
Total Other Purchased Services	\$284,021.84	\$277,662.91		\$561,684.75
600 Supplies				
610 General Supplies	7,393.58	3,990.25	1,390.26	12,774.09
630 Food		120.00		120.00
640 Books and Periodicals	1,200.73	338.48		1,539.21
650 Supplies & Fees – Technology Related	99.99	169.82		269.81
Total Supplies	\$8,694.30	\$4,618.55	\$1,390.26	\$14,703.11
700 Property				
752 Capital Equipment – Original and Additional			5,638.50	5,638.50
Total Property			\$5,638.50	\$5,638.50
800 Other Objects				
810 Dues and Fees	329.75	211.25		541.00
890 Miscellaneous Expenditures	26.40	53.60		80.00
Total Other Objects	\$356.15	\$264.85		\$621.00
Total 1200 Special Programs – Elementary / Secondary	\$1,240,175.43	\$996,774.52	\$389,670.86	\$2,626,620.81

General Fund (10)

1210 Life Skills Support

	<u>Elementary</u>	<u>Secondary</u>	<u>Federal</u>	<u>Total</u>
100 Personnel Services – Salaries				
100 Personnel Services – Salaries	55,224.51	91,553.04	63,788.77	210,566.32
Total Personnel Services – Salaries	\$55,224.51	\$91,553.04	\$63,788.77	\$210,566.32
200 Personnel Services – Employee Benefits				
210 Group Insurance – Contracted Provider	11,144.00	27,242.23	16,811.86	55,198.09
220 Social Security Contributions	5,015.49	8,092.37	2,339.22	15,447.08
230 PSERS Retirement Contributions	21,858.46	36,335.10	10,388.02	68,581.58
Total Personnel Services – Employee Benefits	\$38,017.95	\$71,669.70	\$29,539.10	\$139,226.75
500 Other Purchased Services				
510 Student Transportation Services		2,107.52		2,107.52
561 Tuition To Other School Districts Within the State		2,069.73		2,069.73
580 Travel		92.80		92.80
Total Other Purchased Services		\$4,270.05		\$4,270.05
600 Supplies				
610 General Supplies	1,112.78	2,249.37	325.00	3,687.15
640 Books and Periodicals	252.47	338.48		590.95
650 Supplies & Fees – Technology Related		169.82		169.82
Total Supplies	\$1,365.25	\$2,757.67	\$325.00	\$4,447.92
700 Property				
752 Capital Equipment – Original and Additional			5,638.50	5,638.50
Total Property			\$5,638.50	\$5,638.50
Total 1210 Life Skills Support	\$94,607.71	\$170,250.46	\$99,291.37	\$364,149.54

General Fund (10)

1220 Sensory Support

100 Personnel Services – Salaries

	<u>Elementary</u>	<u>Secondary</u>	<u>Federal</u>	<u>Total</u>
100 Personnel Services – Salaries	57,624.93	16,833.72	35,355.35	109,814.00
Total Personnel Services – Salaries	\$57,624.93	\$16,833.72	\$35,355.35	\$109,814.00
200 Personnel Services – Employee Benefits				
210 Group Insurance – Contracted Provider	15,891.51	2,947.47	8,250.80	27,089.78
220 Social Security Contributions	5,396.12	1,587.88	1,250.62	8,234.62
230 PSERS Retirement Contributions	23,470.86	6,863.53	5,431.89	35,766.28
Total Personnel Services – Employee Benefits	\$44,758.49	\$11,398.88	\$14,933.31	\$71,090.68
300 Purchased Professional and Technical Services				
322 Professional Educational Services – Ius	3,574.84	4,747.98		8,322.82
324 Professional Educational Services – Employee Training and Development Services	500.00			500.00
330 Other Professional Services	1,696.71	1,064.32		2,761.03
Total Purchased Professional and Technical Services	\$5,771.55	\$5,812.30		\$11,583.85
500 Other Purchased Services				
580 Travel	132.34	94.86		227.20
Total Other Purchased Services	\$132.34	\$94.86		\$227.20
600 Supplies				
610 General Supplies	439.55			439.55
640 Books and Periodicals	219.49			219.49
Total Supplies	\$659.04			\$659.04
800 Other Objects				
810 Dues and Fees	294.75	211.25		506.00
Total Other Objects	\$294.75	\$211.25		\$506.00
Total 1220 Sensory Support	\$109,241.10	\$34,351.01	\$50,288.66	\$193,880.77

General Fund (10)

1230 Emotional Support

	<u>Elementary</u>	<u>Secondary</u>	<u>Federal</u>	<u>Total</u>
100 Personnel Services – Salaries				
100 Personnel Services – Salaries	66,117.68		73,814.32	139,932.00
Total Personnel Services – Salaries	\$66,117.68		\$73,814.32	\$139,932.00
200 Personnel Services – Employee Benefits				
210 Group Insurance – Contracted Provider	17,325.19		24,002.75	41,327.94
220 Social Security Contributions	6,028.07		4,416.38	10,444.45
230 PSERS Retirement Contributions	27,351.97		18,222.76	45,574.73
Total Personnel Services – Employee Benefits	\$50,705.23		\$46,641.89	\$97,347.12
300 Purchased Professional and Technical Services				
322 Professional Educational Services – lus	14,394.65	137,709.48		152,104.13
324 Professional Educational Services – Employee Training and Development Services	195.00		150.00	345.00
Total Purchased Professional and Technical Services	\$14,589.65	\$137,709.48	\$150.00	\$152,449.13
500 Other Purchased Services				
561 Tuition To Other School Districts Within the State	118,713.06	8,387.32		127,100.38
569 Tuition – Other	147,601.72	171,128.80		318,730.52
580 Travel	1,069.38			1,069.38
Total Other Purchased Services	\$267,384.16	\$179,516.12		\$446,900.28
600 Supplies				
610 General Supplies	533.45	1,572.16	886.29	2,991.90
Total Supplies	\$533.45	\$1,572.16	\$886.29	\$2,991.90
800 Other Objects				
810 Dues and Fees	35.00			35.00
Total Other Objects	\$35.00			\$35.00
Total 1230 Emotional Support	\$399,365.17	\$318,797.76	\$121,492.50	\$839,655.43

LEA : 116191203 Bloomsburg Area SD

Printed 1/29/2020 8:28:45 AM

REVISED SUBMISSION

Page - 10 of 23

General Fund (10)

1240 Academic Support

	<u>Elementary</u>	<u>Secondary</u>	<u>Federal</u>	<u>Total</u>
100 Personnel Services – Salaries				
100 Personnel Services – Salaries	351,698.91	224,761.07	39,554.55	616,014.53
Total Personnel Services – Salaries	\$351,698.91	\$224,761.07	\$39,554.55	\$616,014.53
200 Personnel Services – Employee Benefits				
210 Group Insurance – Contracted Provider	108,517.29	51,251.91	25,801.48	185,570.68
220 Social Security Contributions	27,422.21	17,437.47	1,239.32	46,099.00
230 PSERS Retirement Contributions	117,290.57	75,393.89	5,556.51	198,240.97
Total Personnel Services – Employee Benefits	\$253,230.07	\$144,083.27	\$32,597.31	\$429,910.65
300 Purchased Professional and Technical Services				
322 Professional Educational Services – lus	5.00	10.00		15.00
324 Professional Educational Services – Employee Training and Development Services	1,401.75	2,705.75	300.00	4,407.50
Total Purchased Professional and Technical Services	\$1,406.75	\$2,715.75	\$300.00	\$4,422.50
500 Other Purchased Services				
562 Tuition To Pennsylvania Charter Schools	11,382.97	88,878.79		100,261.76
580 Travel	879.75	118.87		998.62
Total Other Purchased Services	\$12,262.72	\$88,997.66		\$101,260.38
600 Supplies				
610 General Supplies	4,774.94	168.72	178.97	5,122.63
630 Food		120.00		120.00
640 Books and Periodicals	728.77			728.77
650 Supplies & Fees – Technology Related	99.99			99.99
Total Supplies	\$5,603.70	\$288.72	\$178.97	\$6,071.39
800 Other Objects				
890 Miscellaneous Expenditures	26.40	53.60		80.00
Total Other Objects	\$26.40	\$53.60		\$80.00
Total 1240 Academic Support	\$624,228.55	\$460,900.07	\$72,630.83	\$1,157,759.45

General Fund (10)

	<u>Elementary</u>	<u>Secondary</u>	<u>Federal</u>	<u>Total</u>
1241 Learning Support – Public				
100 Personnel Services – Salaries				
100 Personnel Services – Salaries	313,690.32	220,374.71	39,554.55	573,619.58
Total Personnel Services – Salaries	\$313,690.32	\$220,374.71	\$39,554.55	\$573,619.58
200 Personnel Services – Employee Benefits				
210 Group Insurance – Contracted Provider	106,350.06	50,107.67	25,801.48	182,259.21
220 Social Security Contributions	24,524.59	17,111.97	1,239.32	42,875.88
230 PSERS Retirement Contributions	105,453.98	73,965.24	5,556.51	184,975.73
Total Personnel Services – Employee Benefits	\$236,328.63	\$141,184.88	\$32,597.31	\$410,110.82
300 Purchased Professional and Technical Services				
322 Professional Educational Services – lus	5.00	10.00		15.00
324 Professional Educational Services – Employee Training and Development Services	1,080.00	2,052.50	300.00	3,432.50
Total Purchased Professional and Technical Services	\$1,085.00	\$2,062.50	\$300.00	\$3,447.50
500 Other Purchased Services				
562 Tuition To Pennsylvania Charter Schools	11,382.97	88,878.79		100,261.76
580 Travel	779.06	18.40		797.46
Total Other Purchased Services	\$12,162.03	\$88,897.19		\$101,059.22
600 Supplies				
610 General Supplies	4,501.51	135.13	178.97	4,815.61
630 Food		120.00		120.00
640 Books and Periodicals	728.77			728.77
650 Supplies & Fees – Technology Related	99.99			99.99
Total Supplies	\$5,330.27	\$255.13	\$178.97	\$5,764.37
Total 1241 Learning Support – Public	\$568,596.25	\$452,774.41	\$72,630.83	\$1,094,001.49

General Fund (10)

1243 Gifted Support

	<u>Elementary</u>	<u>Secondary</u>	<u>Federal</u>	<u>Total</u>
100 Personnel Services – Salaries				
100 Personnel Services – Salaries	38,008.59	4,386.36		42,394.95
Total Personnel Services – Salaries	\$38,008.59	\$4,386.36		\$42,394.95
200 Personnel Services – Employee Benefits				
210 Group Insurance – Contracted Provider	2,167.23	1,144.24		3,311.47
220 Social Security Contributions	2,897.62	325.50		3,223.12
230 PSERS Retirement Contributions	11,836.59	1,428.65		13,265.24
Total Personnel Services – Employee Benefits	\$16,901.44	\$2,898.39		\$19,799.83
300 Purchased Professional and Technical Services				
324 Professional Educational Services – Employee Training and Development Services	321.75	653.25		975.00
Total Purchased Professional and Technical Services	\$321.75	\$653.25		\$975.00
500 Other Purchased Services				
580 Travel	100.69	100.47		201.16
Total Other Purchased Services	\$100.69	\$100.47		\$201.16
600 Supplies				
610 General Supplies	273.43	33.59		307.02
Total Supplies	\$273.43	\$33.59		\$307.02
800 Other Objects				
890 Miscellaneous Expenditures	26.40	53.60		80.00
Total Other Objects	\$26.40	\$53.60		\$80.00
Total 1243 Gifted Support	\$55,632.30	\$8,125.66		\$63,757.96

REVISED SUBMISSION

General Fund (10)

1260 Physical Support

300 Purchased Professional and Technical Services

330 Other Professional Services

Total Purchased Professional and Technical Services

600 Supplies

610 General Supplies

Total Supplies

Total 1260 Physical Support

Elementary

Secondary

Federal

Total

45,967.50

45,967.50

\$45,967.50

\$45,967.50

532.86

532.86

\$532.86

\$532.86

\$532.86

\$45,967.50

\$46,500.36

REVISED SUBMISSION

General Fund (10)

1280 Early Intervention Support

300 Purchased Professional and Technical Services

322 Professional Educational Services – lus

Total Purchased Professional and Technical Services

Total 1280 Early Intervention Support

	<u>Elementary</u>	<u>Secondary</u>	<u>Federal</u>	<u>Total</u>
	7,957.42			7,957.42
	\$7,957.42			\$7,957.42
	\$7,957.42			\$7,957.42

General Fund (10)

1290 Special Programs - Other Support

300 Purchased Professional and Technical Services

322 Professional Educational Services – Ius

Total Purchased Professional and Technical Services

500 Other Purchased Services

567 Tuition To Approved Private Schools (APS) and PA Chartered Schools for the Deaf and Blind

594 IU Payment By Withholding for Institutionalized Children’s Programs – Special Classes

Total Other Purchased Services

Total 1290 Special Programs - Other Support

	<u>Elementary</u>	<u>Secondary</u>	<u>Federal</u>	<u>Total</u>
		7,691.00		7,691.00
		\$7,691.00		\$7,691.00
	4,191.90	4,727.03		8,918.93
	50.72	57.19		107.91
	\$4,242.62	\$4,784.22		\$9,026.84
	\$4,242.62	\$12,475.22		\$16,717.84

General Fund (10)

1300 Vocational Education

100 Personnel Services – Salaries

100 Personnel Services – Salaries

Total Personnel Services – Salaries

200 Personnel Services – Employee Benefits

210 Group Insurance – Contracted Provider

220 Social Security Contributions

230 PSERS Retirement Contributions

Total Personnel Services – Employee Benefits

300 Purchased Professional and Technical Services

324 Professional Educational Services – Employee Training and Development Services

Total Purchased Professional and Technical Services

500 Other Purchased Services

510 Student Transportation Services

564 Tuition To Career and Technology Centers

580 Travel

Total Other Purchased Services

600 Supplies

610 General Supplies

640 Books and Periodicals

650 Supplies & Fees – Technology Related

Total Supplies

700 Property

752 Capital Equipment – Original and Additional

Total Property

800 Other Objects

810 Dues and Fees

Total Other Objects

Total 1300 Vocational Education

	<u>Elementary</u>	<u>Secondary</u>	<u>Federal</u>	<u>Total</u>
		281,359.00		281,359.00
		\$281,359.00		\$281,359.00
		63,951.44		63,951.44
		21,132.91		21,132.91
		90,824.59		90,824.59
		\$175,908.94		\$175,908.94
		570.00		570.00
		\$570.00		\$570.00
		320.52		320.52
		846,666.00		846,666.00
		623.42		623.42
		\$847,609.94		\$847,609.94
		33,993.43		33,993.43
		164.95		164.95
		1,450.00		1,450.00
		\$35,608.38		\$35,608.38
		23,447.25		23,447.25
		\$23,447.25		\$23,447.25
		150.00		150.00
		\$150.00		\$150.00
		\$1,364,653.51		\$1,364,653.51

General Fund (10)

1400 Other Instructional Programs – Elementary / Secondary

	<u>Elementary</u>	<u>Secondary</u>	<u>Federal</u>	<u>Total</u>
100 Personnel Services – Salaries				
100 Personnel Services – Salaries	1,858.74	58,483.74		60,342.48
Total Personnel Services – Salaries	\$1,858.74	\$58,483.74		\$60,342.48
200 Personnel Services – Employee Benefits				
210 Group Insurance – Contracted Provider		14,161.07		14,161.07
220 Social Security Contributions	140.98	4,388.08		4,529.06
230 PSERS Retirement Contributions	605.40	19,009.67		19,615.07
Total Personnel Services – Employee Benefits	\$746.38	\$37,558.82		\$38,305.20
300 Purchased Professional and Technical Services				
322 Professional Educational Services – lus		13,139.11		13,139.11
Total Purchased Professional and Technical Services		\$13,139.11		\$13,139.11
400 Purchased Property Services				
430 Repairs and Maintenance Services		27.29		27.29
Total Purchased Property Services		\$27.29		\$27.29
500 Other Purchased Services				
561 Tuition To Other School Districts Within the State	14,693.17	68,863.64		83,556.81
568 Tuition To Private Residential Rehabilitative Institutions (PRRI) [In-State] and Detention Centers		7,617.25		7,617.25
569 Tuition – Other	106.00	454.00		560.00
580 Travel	0.48	0.96		1.44
Total Other Purchased Services	\$14,799.65	\$76,935.85		\$91,735.50
600 Supplies				
620 Energy		359.87		359.87
Total Supplies		\$359.87		\$359.87
800 Other Objects				
810 Dues and Fees		400.00		400.00
Total Other Objects		\$400.00		\$400.00
Total 1400 Other Instructional Programs – Elementary / Secondary	\$17,404.77	\$186,904.68		\$204,309.45

General Fund (10)

1410 Drivers' Education

100 Personnel Services – Salaries

	<u>Elementary</u>	<u>Secondary</u>	<u>Federal</u>	<u>Total</u>
100 Personnel Services – Salaries		57,072.98		57,072.98
Total Personnel Services – Salaries		\$57,072.98		\$57,072.98

200 Personnel Services – Employee Benefits

210 Group Insurance – Contracted Provider		14,161.07		14,161.07
220 Social Security Contributions		4,280.35		4,280.35
230 PSERS Retirement Contributions		18,550.17		18,550.17
Total Personnel Services – Employee Benefits		\$36,991.59		\$36,991.59

400 Purchased Property Services

430 Repairs and Maintenance Services		27.29		27.29
Total Purchased Property Services		\$27.29		\$27.29

600 Supplies

620 Energy		359.87		359.87
Total Supplies		\$359.87		\$359.87

Total 1410 Drivers' Education

Total 1410 Drivers' Education		\$94,451.73		\$94,451.73
--------------------------------------	--	--------------------	--	--------------------

General Fund (10)

	<u>Elementary</u>	<u>Secondary</u>	<u>Federal</u>	<u>Total</u>
1430 Homebound Instruction				
100 Personnel Services – Salaries				
100 Personnel Services – Salaries	1,858.74	1,410.76		3,269.50
Total Personnel Services – Salaries	\$1,858.74	\$1,410.76		\$3,269.50
200 Personnel Services – Employee Benefits				
220 Social Security Contributions	140.98	107.73		248.71
230 PSERS Retirement Contributions	605.40	459.50		1,064.90
Total Personnel Services – Employee Benefits	\$746.38	\$567.23		\$1,313.61
500 Other Purchased Services				
580 Travel	0.48	0.96		1.44
Total Other Purchased Services	\$0.48	\$0.96		\$1.44
Total 1430 Homebound Instruction	\$2,605.60	\$1,978.95		\$4,584.55

General Fund (10)

	<u>Elementary</u>	<u>Secondary</u>	<u>Federal</u>	<u>Total</u>
1440 Alternative Regular Education Programs				
300 <u>Purchased Professional and Technical Services</u>				
322 Professional Educational Services – Ius		13,139.11		13,139.11
Total Purchased Professional and Technical Services		\$13,139.11		\$13,139.11
500 <u>Other Purchased Services</u>				
561 Tuition To Other School Districts Within the State	14,693.17	68,863.64		83,556.81
568 Tuition To Private Residential Rehabilitative Institutions (PRRI) [In-State] and Detention Centers		7,617.25		7,617.25
569 Tuition – Other	106.00	454.00		560.00
Total Other Purchased Services	\$14,799.17	\$76,934.89		\$91,734.06
800 <u>Other Objects</u>				
810 Dues and Fees		400.00		400.00
Total Other Objects		\$400.00		\$400.00
Total 1440 Alternative Regular Education Programs	\$14,799.17	\$90,474.00		\$105,273.17

REVISED SUBMISSION

General Fund (10)

	<u>Elementary</u>	<u>Secondary</u>	<u>Federal</u>	<u>Total</u>
1441 Adjudicated / Court-Placed Programs				
300 <u>Purchased Professional and Technical Services</u>				
322 Professional Educational Services – Ius		13,139.11		13,139.11
Total Purchased Professional and Technical Services		\$13,139.11		\$13,139.11
500 <u>Other Purchased Services</u>				
561 Tuition To Other School Districts Within the State	14,693.17	16,568.89		31,262.06
Total Other Purchased Services	\$14,693.17	\$16,568.89		\$31,262.06
Total 1441 Adjudicated / Court-Placed Programs	\$14,693.17	\$29,708.00		\$44,401.17

General Fund (10)

1442 Alternative Education Programs

500 Other Purchased Services

	<u>Elementary</u>	<u>Secondary</u>	<u>Federal</u>	<u>Total</u>
561 Tuition To Other School Districts Within the State		52,294.75		52,294.75
568 Tuition To Private Residential Rehabilitative Institutions (PRRI) [In-State] and Detention Centers		7,617.25		7,617.25
569 Tuition – Other	106.00	454.00		560.00

Total Other Purchased Services	\$106.00	\$60,366.00		\$60,472.00
---------------------------------------	-----------------	--------------------	--	--------------------

800 Other Objects

810 Dues and Fees		400.00		400.00
-------------------	--	--------	--	--------

Total Other Objects		\$400.00		\$400.00
----------------------------	--	-----------------	--	-----------------

Total 1442 Alternative Education Programs	\$106.00	\$60,766.00		\$60,872.00
--	-----------------	--------------------	--	--------------------

REVISED SUBMISSION

General Fund (10)

1500 Nonpublic School Programs

300 Purchased Professional and Technical Services

322 Professional Educational Services – lus

Total Purchased Professional and Technical Services

Total 1500 Nonpublic School Programs

Elementary

Secondary

Federal

Total

1,276.00

1,289.00

\$1,276.00

\$1,289.00

\$1,276.00

\$1,289.00

General Fund (10)

2000 Support Services

Total

100 Personnel Services – Salaries

100 Personnel Services – Salaries 2,567,993.98

Total Personnel Services – Salaries

\$2,567,993.98

200 Personnel Services – Employee Benefits

210 Group Insurance – Contracted Provider 815,455.08

220 Social Security Contributions 189,572.48

230 PSERS Retirement Contributions 821,890.73

240 Tuition Reimbursement 98,248.80

Total Personnel Services – Employee Benefits

\$1,925,167.09

300 Purchased Professional and Technical Services

324 Professional Educational Services – Employee Training and Development Services 17,703.96

330 Other Professional Services 197,377.44

Total Purchased Professional and Technical Services

\$215,081.40

400 Purchased Property Services

410 Cleaning Services 44,850.90

420 Utility Services 57,337.76

430 Repairs and Maintenance Services 186,623.93

440 Rentals 27,818.54

450 Construction Services 34,552.32

460 Extermination Services 7,092.00

490 Other Purchased Property Services 1,090.80

Total Purchased Property Services

\$359,366.25

500 Other Purchased Services

513 Contracted Carriers 977,511.41

516 Student Transportation Services From the IU 8,457.80

520 Insurance – General 6,400.75

523 General Property and Liability Insurance 103,300.00

530 Communications 100,686.73

549 Other Advertising/Public Relations 13,709.27

550 Printing and Binding 13,686.96

580 Travel 9,596.21

Total Other Purchased Services

\$1,233,349.13

600 Supplies

610 General Supplies 367,638.35

620 Energy 418,227.17

630 Food 8,410.98

640 Books and Periodicals 19,663.79

650 Supplies & Fees – Technology Related 233,367.83

Total Supplies

\$1,047,308.12

700 Property

752 Capital Equipment – Original and Additional 447,748.23

762 Capitalized Equipment - Replacement 549.99

Total Property

\$448,298.22

REVISED SUBMISSION

General Fund (10)

2000 Support Services

800 Other Objects

810 Dues and Fees

38,041.50

890 Miscellaneous Expenditures

1,681.00

Total Other Objects

\$39,722.50

Total 2000 Support Services

\$7,836,286.69

General Fund (10)

2100 Support Services – Students

100 Personnel Services – Salaries

	<u>Elementary</u>	<u>Secondary</u>	<u>Federal</u>	<u>Total</u>
100 Personnel Services – Salaries	186,584.93	192,400.45		378,985.38
Total Personnel Services – Salaries	\$186,584.93	\$192,400.45		\$378,985.38

200 Personnel Services – Employee Benefits

210 Group Insurance – Contracted Provider	38,274.22	47,419.79		85,694.01
220 Social Security Contributions	13,983.86	14,450.85		28,434.71
230 PSERS Retirement Contributions	60,735.50	62,661.44		123,396.94
Total Personnel Services – Employee Benefits	\$112,993.58	\$124,532.08		\$237,525.66

300 Purchased Professional and Technical Services

324 Professional Educational Services – Employee Training and Development Services	50.76	57.24		108.00
330 Other Professional Services	8,948.94	18,169.06		27,118.00
Total Purchased Professional and Technical Services	\$8,999.70	\$18,226.30		\$27,226.00

400 Purchased Property Services

440 Rentals	118.54	391.65		510.19
Total Purchased Property Services	\$118.54	\$391.65		\$510.19

500 Other Purchased Services

530 Communications	48.85	98.00		146.85
580 Travel	329.75	287.45		617.20
Total Other Purchased Services	\$378.60	\$385.45		\$764.05

600 Supplies

610 General Supplies	11,048.07	2,528.63		13,576.70
630 Food	194.58			194.58
640 Books and Periodicals	158.74			158.74
Total Supplies	\$11,401.39	\$2,528.63		\$13,930.02

800 Other Objects

810 Dues and Fees	350.07	366.93		717.00
890 Miscellaneous Expenditures		1,681.00		1,681.00
Total Other Objects	\$350.07	\$2,047.93		\$2,398.00

Total 2100 Support Services – Students

	\$320,826.81	\$340,512.49		\$661,339.30
--	---------------------	---------------------	--	---------------------

General Fund (10)

2120 Guidance Services

100 Personnel Services – Salaries

100 Personnel Services – Salaries

Elementary

Secondary

Federal

Total

163,796.51

166,702.87

330,499.38

Total Personnel Services – Salaries

\$163,796.51

\$166,702.87

\$330,499.38

200 Personnel Services – Employee Benefits

210 Group Insurance – Contracted Provider

220 Social Security Contributions

230 PSERS Retirement Contributions

34,027.83

42,631.31

76,659.14

12,264.87

12,512.41

24,777.28

53,313.33

54,291.76

107,605.09

Total Personnel Services – Employee Benefits

\$99,606.03

\$109,435.48

\$209,041.51

300 Purchased Professional and Technical Services

330 Other Professional Services

8,948.94

18,169.06

27,118.00

Total Purchased Professional and Technical Services

\$8,948.94

\$18,169.06

\$27,118.00

400 Purchased Property Services

440 Rentals

118.54

391.65

510.19

Total Purchased Property Services

\$118.54

\$391.65

\$510.19

500 Other Purchased Services

530 Communications

580 Travel

48.85

98.00

146.85

109.60

39.20

148.80

Total Other Purchased Services

\$158.45

\$137.20

\$295.65

600 Supplies

610 General Supplies

630 Food

640 Books and Periodicals

10,648.07

2,051.15

12,699.22

194.58

194.58

158.74

158.74

Total Supplies

\$11,001.39

\$2,051.15

\$13,052.54

800 Other Objects

810 Dues and Fees

890 Miscellaneous Expenditures

251.37

255.63

507.00

1,681.00

1,681.00

Total Other Objects

\$251.37

\$1,936.63

\$2,188.00

Total 2120 Guidance Services

\$283,881.23

\$298,824.04

\$582,705.27

General Fund (10)

	<u>Elementary</u>	<u>Secondary</u>	<u>Federal</u>	<u>Total</u>
2140 Psychological Services				
100 Personnel Services – Salaries				
100 Personnel Services – Salaries	22,788.42	25,697.58		48,486.00
Total Personnel Services – Salaries	\$22,788.42	\$25,697.58		\$48,486.00
200 Personnel Services – Employee Benefits				
210 Group Insurance – Contracted Provider	4,246.39	4,788.48		9,034.87
220 Social Security Contributions	1,718.99	1,938.44		3,657.43
230 PSERS Retirement Contributions	7,422.17	8,369.68		15,791.85
Total Personnel Services – Employee Benefits	\$13,387.55	\$15,096.60		\$28,484.15
300 Purchased Professional and Technical Services				
324 Professional Educational Services – Employee Training and Development Services	50.76	57.24		108.00
Total Purchased Professional and Technical Services	\$50.76	\$57.24		\$108.00
500 Other Purchased Services				
580 Travel	220.15	248.25		468.40
Total Other Purchased Services	\$220.15	\$248.25		\$468.40
600 Supplies				
610 General Supplies	400.00	477.48		877.48
Total Supplies	\$400.00	\$477.48		\$877.48
800 Other Objects				
810 Dues and Fees	98.70	111.30		210.00
Total Other Objects	\$98.70	\$111.30		\$210.00
Total 2140 Psychological Services	\$36,945.58	\$41,688.45		\$78,634.03

General Fund (10)

2200 Support Services – Instructional Staff

	<u>Elementary</u>	<u>Secondary</u>	<u>Federal</u>	<u>Total</u>
100 Personnel Services – Salaries				
100 Personnel Services – Salaries	224,166.82	199,584.88		423,751.70
Total Personnel Services – Salaries	\$224,166.82	\$199,584.88		\$423,751.70
200 Personnel Services – Employee Benefits				
210 Group Insurance – Contracted Provider	49,094.68	49,864.05		98,958.73
220 Social Security Contributions	16,716.89	14,819.39		31,536.28
230 PSERS Retirement Contributions	73,009.45	65,003.17		138,012.62
240 Tuition Reimbursement	67,962.24	30,286.56		98,248.80
Total Personnel Services – Employee Benefits	\$206,783.26	\$159,973.17		\$366,756.43
300 Purchased Professional and Technical Services				
324 Professional Educational Services – Employee Training and Development Services	6,482.06	7,142.94		13,625.00
330 Other Professional Services	2,115.00	2,385.00		4,500.00
Total Purchased Professional and Technical Services	\$8,597.06	\$9,527.94		\$18,125.00
500 Other Purchased Services				
530 Communications	235.00	265.00		500.00
580 Travel	946.64	1,077.68		2,024.32
Total Other Purchased Services	\$1,181.64	\$1,342.68		\$2,524.32
600 Supplies				
610 General Supplies	2,000.89	2,657.72		4,658.61
630 Food	1,101.03	1,241.57		2,342.60
640 Books and Periodicals	9,621.99	7,365.39		16,987.38
650 Supplies & Fees – Technology Related	5,092.23	11,253.90		16,346.13
Total Supplies	\$17,816.14	\$22,518.58		\$40,334.72
800 Other Objects				
810 Dues and Fees	720.98	1,124.02		1,845.00
Total Other Objects	\$720.98	\$1,124.02		\$1,845.00
Total 2200 Support Services – Instructional Staff	\$459,265.90	\$394,071.27		\$853,337.17

General Fund (10)

2250 School Library Services

	<u>Elementary</u>	<u>Secondary</u>	<u>Federal</u>	<u>Total</u>
100 Personnel Services – Salaries				
100 Personnel Services – Salaries	149,954.65	115,898.83		265,853.48
Total Personnel Services – Salaries	\$149,954.65	\$115,898.83		\$265,853.48
200 Personnel Services – Employee Benefits				
210 Group Insurance – Contracted Provider	27,323.73	25,313.83		52,637.56
220 Social Security Contributions	11,131.78	8,521.29		19,653.07
230 PSERS Retirement Contributions	48,840.13	37,748.40		86,588.53
Total Personnel Services – Employee Benefits	\$87,295.64	\$71,583.52		\$158,879.16
300 Purchased Professional and Technical Services				
324 Professional Educational Services – Employee Training and Development Services	331.17	206.83		538.00
Total Purchased Professional and Technical Services	\$331.17	\$206.83		\$538.00
500 Other Purchased Services				
580 Travel	11.27	22.89		34.16
Total Other Purchased Services	\$11.27	\$22.89		\$34.16
600 Supplies				
610 General Supplies	1,492.81	2,084.78		3,577.59
640 Books and Periodicals	8,755.03	6,387.75		15,142.78
650 Supplies & Fees – Technology Related	4,140.95	10,181.18		14,322.13
Total Supplies	\$14,388.79	\$18,653.71		\$33,042.50
800 Other Objects				
810 Dues and Fees		311.00		311.00
Total Other Objects		\$311.00		\$311.00
Total 2250 School Library Services	\$251,981.52	\$206,676.78		\$458,658.30

General Fund (10)

2260 Instruction and Curriculum Development Services

	<u>Elementary</u>	<u>Secondary</u>	<u>Federal</u>	<u>Total</u>
100 Personnel Services – Salaries				
100 Personnel Services – Salaries	74,212.17	83,686.05		157,898.22
Total Personnel Services – Salaries	\$74,212.17	\$83,686.05		\$157,898.22
200 Personnel Services – Employee Benefits				
210 Group Insurance – Contracted Provider	21,770.95	24,550.22		46,321.17
220 Social Security Contributions	5,585.11	6,298.10		11,883.21
230 PSERS Retirement Contributions	24,169.32	27,254.77		51,424.09
Total Personnel Services – Employee Benefits	\$51,525.38	\$58,103.09		\$109,628.47
300 Purchased Professional and Technical Services				
324 Professional Educational Services – Employee Training and Development Services	6,150.89	6,936.11		13,087.00
330 Other Professional Services	2,115.00	2,385.00		4,500.00
Total Purchased Professional and Technical Services	\$8,265.89	\$9,321.11		\$17,587.00
500 Other Purchased Services				
530 Communications	235.00	265.00		500.00
580 Travel	935.37	1,054.79		1,990.16
Total Other Purchased Services	\$1,170.37	\$1,319.79		\$2,490.16
600 Supplies				
610 General Supplies	508.08	572.94		1,081.02
630 Food	1,101.03	1,241.57		2,342.60
640 Books and Periodicals	866.96	977.64		1,844.60
650 Supplies & Fees – Technology Related	951.28	1,072.72		2,024.00
Total Supplies	\$3,427.35	\$3,864.87		\$7,292.22
800 Other Objects				
810 Dues and Fees	720.98	813.02		1,534.00
Total Other Objects	\$720.98	\$813.02		\$1,534.00
Total 2260 Instruction and Curriculum Development Services	\$139,322.14	\$157,107.93		\$296,430.07

REVISED SUBMISSION

General Fund (10)

	<u>Elementary</u>	<u>Secondary</u>	<u>Federal</u>	<u>Total</u>
2270 Instructional Staff Professional Development Services				
200 Personnel Services – Employee Benefits				
240 Tuition Reimbursement	67,962.24	30,286.56		98,248.80
Total Personnel Services – Employee Benefits	\$67,962.24	\$30,286.56		\$98,248.80
Total 2270 Instructional Staff Professional Development Services	\$67,962.24	\$30,286.56		\$98,248.80

General Fund (10)

2300 Support Services – Administration

	<u>Elementary</u>	<u>Secondary</u>	<u>Federal</u>	<u>Total</u>
100 Personnel Services – Salaries				
100 Personnel Services – Salaries	298,597.19	219,775.73		715,330.38
Total Personnel Services – Salaries	\$298,597.19	\$219,775.73		\$715,330.38
200 Personnel Services – Employee Benefits				
210 Group Insurance – Contracted Provider	105,389.58	94,594.36		227,054.39
220 Social Security Contributions	21,789.12	16,118.53		52,466.16
230 PSERS Retirement Contributions	96,031.49	70,314.28		223,717.96
Total Personnel Services – Employee Benefits	\$223,210.19	\$181,027.17		\$503,238.51
300 Purchased Professional and Technical Services				
324 Professional Educational Services – Employee Training and Development Services	50.00	349.00		1,363.96
330 Other Professional Services				107,275.63
Total Purchased Professional and Technical Services	\$50.00	\$349.00		\$108,639.59
400 Purchased Property Services				
440 Rentals	1,395.01	5,508.41		9,700.85
Total Purchased Property Services	\$1,395.01	\$5,508.41		\$9,700.85
500 Other Purchased Services				
520 Insurance – General				6,400.75
530 Communications	6,922.57	11,540.06		22,652.53
549 Other Advertising/Public Relations				13,709.27
550 Printing and Binding	620.73	3,479.99		13,686.96
580 Travel	338.00	298.28		4,753.27
Total Other Purchased Services	\$7,881.30	\$15,318.33		\$61,202.78
600 Supplies				
610 General Supplies	6,732.77	3,274.24		13,247.40
630 Food		60.00		5,741.75
640 Books and Periodicals	1,517.61	36.07		2,517.67
650 Supplies & Fees – Technology Related	1,893.54	4,307.46		8,627.17
Total Supplies	\$10,143.92	\$7,677.77		\$30,133.99
800 Other Objects				
810 Dues and Fees	1,455.35	1,171.65		29,363.99
Total Other Objects	\$1,455.35	\$1,171.65		\$29,363.99
Total 2300 Support Services – Administration	\$542,732.96	\$430,828.06		\$1,457,610.09

General Fund (10)

2310 Board Services

Elementary

Secondary

Federal

Total

300 Purchased Professional and Technical Services

324 Professional Educational Services – Employee Training and Development Services

170.00

330 Other Professional Services

19,000.00

Total Purchased Professional and Technical Services

\$19,170.00

500 Other Purchased Services

520 Insurance – General

278.75

530 Communications

775.10

549 Other Advertising/Public Relations

13,709.27

Total Other Purchased Services

\$14,763.12

600 Supplies

610 General Supplies

366.76

630 Food

2,085.19

Total Supplies

\$2,451.95

800 Other Objects

810 Dues and Fees

24,640.84

Total Other Objects

\$24,640.84

Total 2310 Board Services

\$61,025.91

General Fund (10)

	<u>Elementary</u>	<u>Secondary</u>	<u>Federal</u>	<u>Total</u>
2330 Tax Assessment and Collection Services				
100 Personnel Services – Salaries				
100 Personnel Services – Salaries				20,796.00
Total Personnel Services – Salaries				\$20,796.00
200 Personnel Services – Employee Benefits				
220 Social Security Contributions				1,590.83
Total Personnel Services – Employee Benefits				\$1,590.83
300 Purchased Professional and Technical Services				
330 Other Professional Services				49,157.63
Total Purchased Professional and Technical Services				\$49,157.63
500 Other Purchased Services				
520 Insurance – General				6,122.00
530 Communications				3,414.80
550 Printing and Binding				7,321.44
Total Other Purchased Services				\$16,858.24
600 Supplies				
610 General Supplies				125.39
650 Supplies & Fees – Technology Related				2,426.17
Total Supplies				\$2,551.56
Total 2330 Tax Assessment and Collection Services				\$90,954.26

General Fund (10)

2350 Legal and Accounting Services

Elementary

Secondary

Federal

Total

300 Purchased Professional and Technical Services

330 Other Professional Services

39,118.00

Total Purchased Professional and Technical Services

\$39,118.00

800 Other Objects

810 Dues and Fees

133.75

Total Other Objects

\$133.75

Total 2350 Legal and Accounting Services

\$39,251.75

General Fund (10)

2360 Office of the Superintendent / Executive Director Services

Elementary

Secondary

Federal

Total

100 Personnel Services – Salaries

100 Personnel Services – Salaries 176,161.46

Total Personnel Services – Salaries \$176,161.46

200 Personnel Services – Employee Benefits

210 Group Insurance – Contracted Provider 27,070.45

220 Social Security Contributions 12,967.68

230 PSERS Retirement Contributions 57,372.19

Total Personnel Services – Employee Benefits \$97,410.32

300 Purchased Professional and Technical Services

324 Professional Educational Services – Employee Training and Development Services 794.96

Total Purchased Professional and Technical Services \$794.96

400 Purchased Property Services

440 Rentals 2,797.43

Total Purchased Property Services \$2,797.43

500 Other Purchased Services

530 Communications 5,109.44 5,764.02 10,873.46

550 Printing and Binding 2,264.80

580 Travel 4,116.99

Total Other Purchased Services \$5,109.44 \$5,764.02 \$17,255.25

600 Supplies

610 General Supplies 2,748.24

630 Food 3,596.56

640 Books and Periodicals 963.99

Total Supplies \$7,308.79

800 Other Objects

810 Dues and Fees 1,962.40

Total Other Objects \$1,962.40

Total 2360 Office of the Superintendent / Executive Director Services \$5,109.44 \$5,764.02 \$303,690.61

General Fund (10)

	<u>Elementary</u>	<u>Secondary</u>	<u>Federal</u>	<u>Total</u>
2380 Office of the Principal Services				
100 Personnel Services – Salaries				
100 Personnel Services – Salaries	298,597.19	219,775.73		518,372.92
Total Personnel Services – Salaries	\$298,597.19	\$219,775.73		\$518,372.92
200 Personnel Services – Employee Benefits				
210 Group Insurance – Contracted Provider	105,389.58	94,594.36		199,983.94
220 Social Security Contributions	21,789.12	16,118.53		37,907.65
230 PSERS Retirement Contributions	96,031.49	70,314.28		166,345.77
Total Personnel Services – Employee Benefits	\$223,210.19	\$181,027.17		\$404,237.36
300 Purchased Professional and Technical Services				
324 Professional Educational Services – Employee Training and Development Services	50.00	349.00		399.00
Total Purchased Professional and Technical Services	\$50.00	\$349.00		\$399.00
400 Purchased Property Services				
440 Rentals	1,395.01	5,508.41		6,903.42
Total Purchased Property Services	\$1,395.01	\$5,508.41		\$6,903.42
500 Other Purchased Services				
530 Communications	1,813.13	5,776.04		7,589.17
550 Printing and Binding	620.73	3,479.99		4,100.72
580 Travel	338.00	298.28		636.28
Total Other Purchased Services	\$2,771.86	\$9,554.31		\$12,326.17
600 Supplies				
610 General Supplies	6,732.77	3,274.24		10,007.01
630 Food		60.00		60.00
640 Books and Periodicals	1,517.61	36.07		1,553.68
650 Supplies & Fees – Technology Related	1,893.54	4,307.46		6,201.00
Total Supplies	\$10,143.92	\$7,677.77		\$17,821.69
800 Other Objects				
810 Dues and Fees	1,455.35	1,171.65		2,627.00
Total Other Objects	\$1,455.35	\$1,171.65		\$2,627.00
Total 2380 Office of the Principal Services	\$537,623.52	\$425,064.04		\$962,687.56

General Fund (10)

2400 Support Services – Pupil Health

<u>Elementary</u>	<u>Secondary</u>	<u>Federal</u>	<u>Total</u>
-------------------	------------------	----------------	--------------

100 Personnel Services – Salaries

100 Personnel Services – Salaries				166,075.37
-----------------------------------	--	--	--	------------

Total Personnel Services – Salaries				\$166,075.37
--	--	--	--	---------------------

200 Personnel Services – Employee Benefits

210 Group Insurance – Contracted Provider				81,660.05
---	--	--	--	-----------

220 Social Security Contributions				11,743.91
-----------------------------------	--	--	--	-----------

230 PSERS Retirement Contributions				52,570.24
------------------------------------	--	--	--	-----------

Total Personnel Services – Employee Benefits				\$145,974.20
---	--	--	--	---------------------

300 Purchased Professional and Technical Services

324 Professional Educational Services – Employee Training and Development Services				609.00
--	--	--	--	--------

Total Purchased Professional and Technical Services				\$609.00
--	--	--	--	-----------------

400 Purchased Property Services

430 Repairs and Maintenance Services				525.00
--------------------------------------	--	--	--	--------

Total Purchased Property Services				\$525.00
--	--	--	--	-----------------

500 Other Purchased Services

580 Travel				475.00
------------	--	--	--	--------

Total Other Purchased Services				\$475.00
---------------------------------------	--	--	--	-----------------

600 Supplies

610 General Supplies				3,185.70
----------------------	--	--	--	----------

650 Supplies & Fees – Technology Related				1,600.00
--	--	--	--	----------

Total Supplies				\$4,785.70
-----------------------	--	--	--	-------------------

800 Other Objects

810 Dues and Fees				100.00
-------------------	--	--	--	--------

Total Other Objects				\$100.00
----------------------------	--	--	--	-----------------

Total 2400 Support Services – Pupil Health				\$318,544.27
---	--	--	--	---------------------

General Fund (10)

2440 Nursing Services

	<u>Elementary</u>	<u>Secondary</u>	<u>Federal</u>	<u>Total</u>
--	-------------------	------------------	----------------	--------------

100 Personnel Services – Salaries				
100 Personnel Services – Salaries				166,075.37
Total Personnel Services – Salaries				\$166,075.37
200 Personnel Services – Employee Benefits				
210 Group Insurance – Contracted Provider				81,660.05
220 Social Security Contributions				11,743.91
230 PSERS Retirement Contributions				52,570.24
Total Personnel Services – Employee Benefits				\$145,974.20
300 Purchased Professional and Technical Services				
324 Professional Educational Services – Employee Training and Development Services				609.00
Total Purchased Professional and Technical Services				\$609.00
400 Purchased Property Services				
430 Repairs and Maintenance Services				525.00
Total Purchased Property Services				\$525.00
500 Other Purchased Services				
580 Travel				475.00
Total Other Purchased Services				\$475.00
600 Supplies				
610 General Supplies				3,185.70
650 Supplies & Fees – Technology Related				1,600.00
Total Supplies				\$4,785.70
800 Other Objects				
810 Dues and Fees				100.00
Total Other Objects				\$100.00
Total 2440 Nursing Services				\$318,544.27

General Fund (10)

2500 Support Services – Business

Elementary

Secondary

Federal

Total

100 Personnel Services – Salaries

100 Personnel Services – Salaries

198,619.14

Total Personnel Services – Salaries

\$198,619.14

200 Personnel Services – Employee Benefits

210 Group Insurance – Contracted Provider

70,382.50

220 Social Security Contributions

14,777.92

230 PSERS Retirement Contributions

64,688.89

Total Personnel Services – Employee Benefits

\$149,849.31

300 Purchased Professional and Technical Services

324 Professional Educational Services – Employee Training and Development Services

1,778.00

330 Other Professional Services

6,435.92

Total Purchased Professional and Technical Services

\$8,213.92

400 Purchased Property Services

430 Repairs and Maintenance Services

48.50

Total Purchased Property Services

\$48.50

500 Other Purchased Services

530 Communications

274.81

580 Travel

324.02

Total Other Purchased Services

\$598.83

600 Supplies

610 General Supplies

1,385.53

650 Supplies & Fees – Technology Related

29,479.79

Total Supplies

\$30,865.32

800 Other Objects

810 Dues and Fees

3,024.51

Total Other Objects

\$3,024.51

Total 2500 Support Services – Business

\$391,219.53

General Fund (10)

2510 Fiscal Services

Elementary

Secondary

Federal

Total

100 Personnel Services – Salaries

100 Personnel Services – Salaries

198,619.14

Total Personnel Services – Salaries

\$198,619.14

200 Personnel Services – Employee Benefits

210 Group Insurance – Contracted Provider

70,382.50

220 Social Security Contributions

14,777.92

230 PSERS Retirement Contributions

64,688.89

Total Personnel Services – Employee Benefits

\$149,849.31

300 Purchased Professional and Technical Services

324 Professional Educational Services – Employee Training and Development Services

1,778.00

330 Other Professional Services

6,435.92

Total Purchased Professional and Technical Services

\$8,213.92

400 Purchased Property Services

430 Repairs and Maintenance Services

48.50

Total Purchased Property Services

\$48.50

500 Other Purchased Services

530 Communications

274.81

580 Travel

324.02

Total Other Purchased Services

\$598.83

600 Supplies

610 General Supplies

1,385.53

650 Supplies & Fees – Technology Related

29,479.79

Total Supplies

\$30,865.32

800 Other Objects

810 Dues and Fees

3,024.51

Total Other Objects

\$3,024.51

Total 2510 Fiscal Services

\$391,219.53

General Fund (10)

2511 Supervision of Fiscal Services - Head of Component

Elementary Secondary Federal Total

100 Personnel Services – Salaries
100 Personnel Services – Salaries 90,054.19

Total Personnel Services – Salaries \$90,054.19

200 Personnel Services – Employee Benefits
210 Group Insurance – Contracted Provider 7,537.75
220 Social Security Contributions 6,818.46
230 PSERS Retirement Contributions 29,330.57

Total Personnel Services – Employee Benefits \$43,686.78

300 Purchased Professional and Technical Services
324 Professional Educational Services – Employee Training and Development Services 962.00
330 Other Professional Services 169.76

Total Purchased Professional and Technical Services \$1,131.76

500 Other Purchased Services
580 Travel 200.02

Total Other Purchased Services \$200.02

600 Supplies
610 General Supplies 874.49
650 Supplies & Fees – Technology Related 72.75

Total Supplies \$947.24

800 Other Objects
810 Dues and Fees 1,280.00

Total Other Objects \$1,280.00

Total 2511 Supervision of Fiscal Services - Head of Component \$137,299.99

REVISED SUBMISSION

General Fund (10)

2514 Payroll Services

Elementary

Secondary

Federal

Total

100 Personnel Services – Salaries

100 Personnel Services – Salaries

25,566.00

Total Personnel Services – Salaries

\$25,566.00

200 Personnel Services – Employee Benefits

210 Group Insurance – Contracted Provider

16,702.85

220 Social Security Contributions

1,836.64

230 PSERS Retirement Contributions

8,325.69

Total Personnel Services – Employee Benefits

\$26,865.18

300 Purchased Professional and Technical Services

324 Professional Educational Services – Employee Training and Development Services

525.00

330 Other Professional Services

6,250.00

Total Purchased Professional and Technical Services

\$6,775.00

Total 2514 Payroll Services

\$59,206.18

General Fund (10)

	<u>Elementary</u>	<u>Secondary</u>	<u>Federal</u>	<u>Total</u>
2515 Financial Accounting Services				
100 Personnel Services – Salaries				
100 Personnel Services – Salaries				82,998.95
Total Personnel Services – Salaries				\$82,998.95
200 Personnel Services – Employee Benefits				
210 Group Insurance – Contracted Provider				46,141.90
220 Social Security Contributions				6,122.82
230 PSERS Retirement Contributions				27,032.63
Total Personnel Services – Employee Benefits				\$79,297.35
300 Purchased Professional and Technical Services				
324 Professional Educational Services – Employee Training and Development Services				291.00
330 Other Professional Services				16.16
Total Purchased Professional and Technical Services				\$307.16
400 Purchased Property Services				
430 Repairs and Maintenance Services				48.50
Total Purchased Property Services				\$48.50
500 Other Purchased Services				
530 Communications				274.81
580 Travel				124.00
Total Other Purchased Services				\$398.81
600 Supplies				
610 General Supplies				511.04
650 Supplies & Fees – Technology Related				29,407.04
Total Supplies				\$29,918.08
800 Other Objects				
810 Dues and Fees				1,744.51
Total Other Objects				\$1,744.51
Total 2515 Financial Accounting Services				\$194,713.36

General Fund (10)

	<u>Elementary</u>	<u>Secondary</u>	<u>Federal</u>	<u>Total</u>
2620 Operation of Buildings Services				
100 Personnel Services – Salaries				
100 Personnel Services – Salaries				465,727.14
Total Personnel Services – Salaries				\$465,727.14
200 Personnel Services – Employee Benefits				
210 Group Insurance – Contracted Provider				180,342.48
220 Social Security Contributions				34,367.03
230 PSERS Retirement Contributions				148,014.60
Total Personnel Services – Employee Benefits				\$362,724.11
300 Purchased Professional and Technical Services				
324 Professional Educational Services – Employee Training and Development Services				220.00
330 Other Professional Services				55,545.19
Total Purchased Professional and Technical Services				\$55,765.19
400 Purchased Property Services				
410 Cleaning Services				44,850.90
420 Utility Services				57,337.76
430 Repairs and Maintenance Services				168,148.03
440 Rentals				17,607.50
450 Construction Services				34,552.32
460 Extermination Services				7,092.00
490 Other Purchased Property Services				1,090.80
Total Purchased Property Services				\$330,679.31
500 Other Purchased Services				
523 General Property and Liability Insurance				103,300.00
530 Communications				12,374.32
580 Travel				297.60
Total Other Purchased Services				\$115,971.92
600 Supplies				
610 General Supplies	94,160.31	100,676.92		194,837.23
620 Energy				418,227.17
650 Supplies & Fees – Technology Related				120.00
Total Supplies	\$94,160.31	\$100,676.92		\$613,184.40
700 Property				
752 Capital Equipment – Original and Additional				34,449.36
762 Capitalized Equipment - Replacement				549.99
Total Property				\$34,999.35
800 Other Objects				
810 Dues and Fees				2,991.00
Total Other Objects				\$2,991.00
Total 2620 Operation of Buildings Services	\$94,160.31	\$100,676.92		\$1,982,042.42

General Fund (10)

	<u>Elementary</u>	<u>Secondary</u>	<u>Federal</u>	<u>Total</u>
2700 Student Transportation Services				
300 <u>Purchased Professional and Technical Services</u>				
330 Other Professional Services				500.00
Total Purchased Professional and Technical Services				\$500.00
500 <u>Other Purchased Services</u>				
513 Contracted Carriers				977,511.41
516 Student Transportation Services From the IU				8,457.80
Total Other Purchased Services				\$985,969.21
600 <u>Supplies</u>				
630 Food				132.05
Total Supplies				\$132.05
Total 2700 Student Transportation Services				\$986,601.26

General Fund (10)

2720 Vehicle Operation Services

Elementary

Secondary

Federal

Total

300 Purchased Professional and Technical Services

330 Other Professional Services

500.00

Total Purchased Professional and Technical Services

\$500.00

500 Other Purchased Services

513 Contracted Carriers

894,938.93

516 Student Transportation Services From the IU

8,457.80

Total Other Purchased Services

\$903,396.73

600 Supplies

630 Food

132.05

Total Supplies

\$132.05

Total 2720 Vehicle Operation Services

\$904,028.78

REVISED SUBMISSION

General Fund (10)

2750 Nonpublic Transportation

Elementary

Secondary

Federal

Total

500 Other Purchased Services

513 Contracted Carriers

82,572.48

Total Other Purchased Services

\$82,572.48

Total 2750 Nonpublic Transportation

\$82,572.48

General Fund (10)

2800 Support Services – Central

Elementary

Secondary

Federal

Total

100 Personnel Services – Salaries

100 Personnel Services – Salaries

219,504.87

Total Personnel Services – Salaries

\$219,504.87

200 Personnel Services – Employee Benefits

210 Group Insurance – Contracted Provider

71,362.92

220 Social Security Contributions

16,246.47

230 PSERS Retirement Contributions

71,489.48

Total Personnel Services – Employee Benefits

\$159,098.87

300 Purchased Professional and Technical Services

330 Other Professional Services

(3,997.30)

Total Purchased Professional and Technical Services

(\$3,997.30)

400 Purchased Property Services

430 Repairs and Maintenance Services

17,902.40

Total Purchased Property Services

\$17,902.40

500 Other Purchased Services

530 Communications

64,738.22

580 Travel

1,104.80

Total Other Purchased Services

\$65,843.02

600 Supplies

610 General Supplies

136,747.18

650 Supplies & Fees – Technology Related

177,194.74

Total Supplies

\$313,941.92

700 Property

752 Capital Equipment – Original and Additional

413,298.87

Total Property

\$413,298.87

Total 2800 Support Services – Central

\$1,185,592.65

General Fund (10)

2810 Planning, Research, Development and Evaluation Services

Elementary

Secondary

Federal

Total

100 Personnel Services – Salaries

100 Personnel Services – Salaries 219,504.87

Total Personnel Services – Salaries \$219,504.87

200 Personnel Services – Employee Benefits

210 Group Insurance – Contracted Provider 71,362.92

220 Social Security Contributions 16,246.47

230 PSERS Retirement Contributions 71,489.48

Total Personnel Services – Employee Benefits \$159,098.87

300 Purchased Professional and Technical Services

330 Other Professional Services (3,997.30)

Total Purchased Professional and Technical Services (\$3,997.30)

400 Purchased Property Services

430 Repairs and Maintenance Services 17,902.40

Total Purchased Property Services \$17,902.40

500 Other Purchased Services

530 Communications 64,738.22

580 Travel 1,104.80

Total Other Purchased Services \$65,843.02

600 Supplies

610 General Supplies 136,747.18

650 Supplies & Fees – Technology Related 177,194.74

Total Supplies \$313,941.92

700 Property

752 Capital Equipment – Original and Additional 413,298.87

Total Property \$413,298.87

Total 2810 Planning, Research, Development and Evaluation Services \$1,185,592.65

General Fund (10)

	<u>Total</u>
3000 Operation of Non-Instructional Services	
100 Personnel Services – Salaries	
100 Personnel Services – Salaries	245,914.89
Total Personnel Services – Salaries	\$245,914.89
200 Personnel Services – Employee Benefits	
210 Group Insurance – Contracted Provider	8,734.21
220 Social Security Contributions	18,801.11
230 PSERS Retirement Contributions	47,226.29
Total Personnel Services – Employee Benefits	\$74,761.61
300 Purchased Professional and Technical Services	
324 Professional Educational Services – Employee Training and Development Services	670.00
330 Other Professional Services	60,231.96
390 Other Purchased Professional and Technical Services	31,710.00
Total Purchased Professional and Technical Services	\$92,611.96
400 Purchased Property Services	
430 Repairs and Maintenance Services	9,406.08
440 Rentals	11,206.08
Total Purchased Property Services	\$20,612.16
500 Other Purchased Services	
510 Student Transportation Services	83,967.48
520 Insurance – General	10,844.00
530 Communications	1,122.22
550 Printing and Binding	772.00
580 Travel	12,985.43
Total Other Purchased Services	\$109,691.13
600 Supplies	
610 General Supplies	109,053.72
630 Food	3,811.68
640 Books and Periodicals	184.12
650 Supplies & Fees – Technology Related	250.00
Total Supplies	\$113,299.52
700 Property	
752 Capital Equipment – Original and Additional	5,812.19
Total Property	\$5,812.19
800 Other Objects	
810 Dues and Fees	3,216.00
890 Miscellaneous Expenditures	9,535.90
Total Other Objects	\$12,751.90
Total 3000 Operation of Non-Instructional Services	\$675,455.36

General Fund (10)

3200 Student Activities

Elementary

Secondary

Federal

Total

100 Personnel Services – Salaries

100 Personnel Services – Salaries 245,914.89

Total Personnel Services – Salaries \$245,914.89

200 Personnel Services – Employee Benefits

210 Group Insurance – Contracted Provider 8,734.21

220 Social Security Contributions 18,801.11

230 PSERS Retirement Contributions 47,226.29

Total Personnel Services – Employee Benefits \$74,761.61

300 Purchased Professional and Technical Services

324 Professional Educational Services – Employee Training and Development Services 670.00

330 Other Professional Services 58,983.00

390 Other Purchased Professional and Technical Services 31,710.00

Total Purchased Professional and Technical Services \$91,363.00

400 Purchased Property Services

430 Repairs and Maintenance Services 9,406.08

440 Rentals 11,206.08

Total Purchased Property Services \$20,612.16

500 Other Purchased Services

510 Student Transportation Services 83,967.48

520 Insurance – General 10,844.00

530 Communications 1,122.22

550 Printing and Binding 772.00

580 Travel 12,985.43

Total Other Purchased Services \$109,691.13

600 Supplies

610 General Supplies 109,053.72

630 Food 3,811.68

640 Books and Periodicals 184.12

650 Supplies & Fees – Technology Related 250.00

Total Supplies \$113,299.52

700 Property

752 Capital Equipment – Original and Additional 5,812.19

Total Property \$5,812.19

800 Other Objects

810 Dues and Fees 3,216.00

890 Miscellaneous Expenditures 9,535.90

Total Other Objects \$12,751.90

Total 3200 Student Activities \$674,206.40

REVISED SUBMISSION

General Fund (10)

3300 Community Services

Elementary

Secondary

Federal

Total

300 Purchased Professional and Technical Services

330 Other Professional Services

1,248.96

Total Purchased Professional and Technical Services

\$1,248.96

Total 3300 Community Services

\$1,248.96

REVISED SUBMISSION

General Fund (10)

5000 Other Expenditures and Financing Uses

Total

800 Other Objects

830 Interest	12,573.48
880 Refunds of Prior Years' Receipts	116,656.56

Total Other Objects	\$129,230.04
----------------------------	---------------------

900 Other Uses of Funds

920 Authority Obligations	51,424.00
930 Fund Transfers	1,845,208.39
932 Capital Reserve Fund Transfers Applicable To Fund 32	200,000.00

Total Other Uses of Funds	\$2,096,632.39
----------------------------------	-----------------------

Total 5000 Other Expenditures and Financing Uses	\$2,225,862.43
---	-----------------------

REVISED SUBMISSION

General Fund (10)

	<u>Elementary</u>	<u>Secondary</u>	<u>Federal</u>	<u>Total</u>
5100 Debt Service / Other Expenditures and Financing Uses				
800 Other Objects				
830 Interest				12,573.48
880 Refunds of Prior Years' Receipts				116,656.56
Total Other Objects				\$129,230.04
900 Other Uses of Funds				
920 Authority Obligations				51,424.00
Total Other Uses of Funds				\$51,424.00
Total 5100 Debt Service / Other Expenditures and Financing Uses				\$180,654.04

REVISED SUBMISSION

General Fund (10)

5110 Debt Service

Elementary

Secondary

Federal

Total

800 Other Objects

830 Interest

12,573.48

Total Other Objects

\$12,573.48

900 Other Uses of Funds

920 Authority Obligations

51,424.00

Total Other Uses of Funds

\$51,424.00

Total 5110 Debt Service

\$63,997.48

REVISED SUBMISSION

General Fund (10)

5130 Refund of Prior Year Revenues / Receipts

Elementary

Secondary

Federal

Total

800 Other Objects

880 Refunds of Prior Years' Receipts

116,656.56

Total Other Objects

\$116,656.56

Total 5130 Refund of Prior Year Revenues / Receipts

\$116,656.56

REVISED SUBMISSION

General Fund (10)

5200 Interfund Transfers – Out

Elementary

Secondary

Federal

Total

900 Other Uses of Funds

930 Fund Transfers

1,845,208.39

932 Capital Reserve Fund Transfers Applicable To Fund 32

200,000.00

Total Other Uses of Funds

\$2,045,208.39

Total 5200 Interfund Transfers – Out

\$2,045,208.39

REVISED SUBMISSION

General Fund (10)

5230 Capital Projects Fund Transfers

Elementary

Secondary

Federal

Total

900 Other Uses of Funds

932 Capital Reserve Fund Transfers Applicable To Fund 32

200,000.00

Total Other Uses of Funds

\$200,000.00

Total 5230 Capital Projects Fund Transfers

\$200,000.00

REVISED SUBMISSION

General Fund (10)

5240 Debt Service Fund Transfers

Elementary

Secondary

Federal

Total

900 Other Uses of Funds

930 Fund Transfers

1,844,145.00

Total Other Uses of Funds

\$1,844,145.00

Total 5240 Debt Service Fund Transfers

\$1,844,145.00

REVISED SUBMISSION

General Fund (10)

5250 Enterprise Fund Transfers

Elementary

Secondary

Federal

Total

900 Other Uses of Funds

930 Fund Transfers

1,063.39

Total Other Uses of Funds

\$1,063.39

Total 5250 Enterprise Fund Transfers

\$1,063.39

REVISED SUBMISSION

Capital Reserve Fund - § 1431 (32)

2000 Support Services

Total

700 Property

766 Capitalized Technology Equipment – Replacement

147,474.29

Total Property

\$147,474.29

Total 2000 Support Services

\$147,474.29

REVISED SUBMISSION

Capital Reserve Fund - § 1431 (32)

2600 Operation and Maintenance of Plant Services

Elementary

Secondary

Federal

Total

700 Property

766 Capitalized Technology Equipment – Replacement

147,474.29

Total Property

\$147,474.29

Total 2600 Operation and Maintenance of Plant Services

\$147,474.29

LEA : 116191203 Bloomsburg Area SD

Printed 1/29/2020 8:28:50 AM

REVISED SUBMISSION

Capital Reserve Fund - § 1431 (32)

2620 Operation of Buildings Services

Elementary

Secondary

Federal

Total

700 Property

766 Capitalized Technology Equipment – Replacement

147,474.29

Total Property

\$147,474.29

Total 2620 Operation of Buildings Services

\$147,474.29

REVISED SUBMISSION

Capital Reserve Fund - § 1431 (32)

4000 Facilities Acquisition, Construction and Improvement Services

Total

300 Purchased Professional and Technical Services

330 Other Professional Services

48,285.29

Total Purchased Professional and Technical Services

\$48,285.29

400 Purchased Property Services

450 Construction Services

174,231.46

490 Other Purchased Property Services

4,765.50

Total Purchased Property Services

\$178,996.96

Total 4000 Facilities Acquisition, Construction and Improvement Services

\$227,282.25

LEA : 116191203 Bloomsburg Area SD

Printed 1/29/2020 8:28:53 AM

REVISED SUBMISSION

Capital Reserve Fund - § 1431 (32)

4200 Existing Site Improvement Services

Elementary

Secondary

Federal

Total

400 Purchased Property Services

490 Other Purchased Property Services

2,100.00

Total Purchased Property Services

\$2,100.00

Total 4200 Existing Site Improvement Services

\$2,100.00

REVISED SUBMISSION

Capital Reserve Fund - § 1431 (32)

4400 Architecture and Engineering Services / Educational Specifications – Improvements

Elementary

Secondary

Federal

Total

300 Purchased Professional and Technical Services

330 Other Professional Services

45,560.29

Total Purchased Professional and Technical Services

\$45,560.29

Total 4400 Architecture and Engineering Services / Educational Specifications – Improvements

\$45,560.29

REVISED SUBMISSION

Capital Reserve Fund - § 1431 (32)

4600 Existing Building Improvement Services

Elementary

Secondary

Federal

Total

300 Purchased Professional and Technical Services

330 Other Professional Services

2,725.00

Total Purchased Professional and Technical Services

\$2,725.00

400 Purchased Property Services

450 Construction Services

174,231.46

490 Other Purchased Property Services

2,665.50

Total Purchased Property Services

\$176,896.96

Total 4600 Existing Building Improvement Services

\$179,621.96

REVISED SUBMISSION

Other Capital Projects Fund (39)

4000 Facilities Acquisition, Construction and Improvement Services

Total

300 Purchased Professional and Technical Services

330 Other Professional Services

51,755.62

Total Purchased Professional and Technical Services

\$51,755.62

400 Purchased Property Services

450 Construction Services

2,978,080.00

Total Purchased Property Services

\$2,978,080.00

Total 4000 Facilities Acquisition, Construction and Improvement Services

\$3,029,835.62

REVISED SUBMISSION

Other Capital Projects Fund (39)

4400 Architecture and Engineering Services / Educational Specifications – Improvements

Elementary

Secondary

Federal

Total

300 Purchased Professional and Technical Services

330 Other Professional Services

51,755.62

Total Purchased Professional and Technical Services

\$51,755.62

Total 4400 Architecture and Engineering Services / Educational Specifications – Improvements

\$51,755.62

REVISED SUBMISSION

Other Capital Projects Fund (39)

4600 Existing Building Improvement Services

Elementary

Secondary

Federal

Total

400 Purchased Property Services

450 Construction Services

2,978,080.00

Total Purchased Property Services

\$2,978,080.00

Total 4600 Existing Building Improvement Services

\$2,978,080.00

REVISED SUBMISSION

Debt Service Fund (40)

2000 Support Services

800 Other Objects

810 Dues and Fees

Total

950.00

Total Other Objects

\$950.00

Total 2000 Support Services

\$950.00

REVISED SUBMISSION

Debt Service Fund (40)

2500 Support Services – Business

Elementary

Secondary

Federal

Total

800 Other Objects

810 Dues and Fees

950.00

Total Other Objects

\$950.00

Total 2500 Support Services – Business

\$950.00

REVISED SUBMISSION

Debt Service Fund (40)

2510 Fiscal Services

Elementary

Secondary

Federal

Total

800 Other Objects

810 Dues and Fees

950.00

Total Other Objects

\$950.00

Total 2510 Fiscal Services

\$950.00

REVISED SUBMISSION

Debt Service Fund (40)

2515 Financial Accounting Services

Elementary

Secondary

Federal

Total

800 Other Objects

810 Dues and Fees

950.00

Total Other Objects

\$950.00

Total 2515 Financial Accounting Services

\$950.00

REVISED SUBMISSION

Debt Service Fund (40)

5000 Other Expenditures and Financing Uses

Total

800 Other Objects

830 Interest 293,195.00

Total Other Objects \$293,195.00

900 Other Uses of Funds

910 Redemption of Principal 1,550,000.00

Total Other Uses of Funds \$1,550,000.00

Total 5000 Other Expenditures and Financing Uses \$1,843,195.00

REVISED SUBMISSION

Debt Service Fund (40)

5100 Debt Service / Other Expenditures and Financing Uses

Elementary

Secondary

Federal

Total

800 Other Objects

830 Interest

293,195.00

Total Other Objects

\$293,195.00

900 Other Uses of Funds

910 Redemption of Principal

1,550,000.00

Total Other Uses of Funds

\$1,550,000.00

Total 5100 Debt Service / Other Expenditures and Financing Uses

\$1,843,195.00

REVISED SUBMISSION

Debt Service Fund (40)

5110 Debt Service

Elementary

Secondary

Federal

Total

800 Other Objects

830 Interest

293,195.00

Total Other Objects

\$293,195.00

900 Other Uses of Funds

910 Redemption of Principal

1,550,000.00

Total Other Uses of Funds

\$1,550,000.00

Total 5110 Debt Service

\$1,843,195.00

REVISED SUBMISSION

	<u>General Fund(10)</u>	<u>Public Purpose Trust(27)</u>	<u>Other Compt Approved (28)</u>	<u>Athletic / Activity(29)</u>	<u>Capital Reserve (690, 1850)(31)</u>
1000 Instruction					
1100 Regular Programs - Elementary / Secondary	10,829,421.77				
1200 Special Programs - Elementary / Secondary	2,626,620.81				
1300 Vocational Education	1,364,653.51				
1400 Other Instructional Programs - Elementary / Secondary	204,309.45				
1500 Nonpublic School Programs	1,289.00				
Total Instruction	\$15,026,294.54				
2000 Support Services					
2100 Support Services - Students	661,339.30				
2200 Support Services - Instructional Staff	853,337.17				
2300 Support Services - Administration	1,457,610.09				
2400 Support Services - Pupil Health	318,544.27				
2500 Support Services - Business	391,219.53				
2600 Operation and Maintenance of Plant Services	1,982,042.42				
2700 Student Transportation Services	986,601.26				
2800 Support Services - Central	1,185,592.65				
Total Support Services	\$7,836,286.69				
3000 Operation of Non-Instructional Services					
3200 Student Activities	674,206.40				
3300 Community Services	1,248.96				
Total Operation of Non-Instructional Services	\$675,455.36				
4000 Facilities Acquisition, Construction and Improvement Services					
4200 Existing Site Improvement Services					
4400 Architecture and Engineering Services / Educational Specifications - Improvements					
4600 Existing Building Improvement Services					
Total Facilities Acquisition, Construction and Improvement					
5000 Other Expenditures and Financing Uses					
5100 Debt Service / Other Expenditures and Financing Uses	180,654.04				
5200 Interfund Transfers - Out	2,045,208.39				
Total Other Expenditures and Financing Uses	\$2,225,862.43				
TOTAL ACTUAL EXPENDITURES & OTHER FINANCING USES	\$25,763,899.02				

	<u>Capital Reserve (1431)(32)</u>	<u>Other Capital Projects Fund(39)</u>	<u>Debt Service(40)</u>	<u>Permanent(90)</u>	<u>Total</u>
1000 Instruction					
1100 Regular Programs - Elementary / Secondary					10,829,421.77
1200 Special Programs - Elementary / Secondary					2,626,620.81
1300 Vocational Education					1,364,653.51
1400 Other Instructional Programs - Elementary / Secondary					204,309.45
1500 Nonpublic School Programs					1,289.00
Total Instruction					\$15,026,294.54
2000 Support Services					
2100 Support Services - Students					661,339.30
2200 Support Services - Instructional Staff					853,337.17
2300 Support Services - Administration					1,457,610.09
2400 Support Services - Pupil Health					318,544.27
2500 Support Services - Business			950.00		392,169.53
2600 Operation and Maintenance of Plant Services	147,474.29				2,129,516.71
2700 Student Transportation Services					986,601.26
2800 Support Services - Central					1,185,592.65
Total Support Services	\$147,474.29		\$950.00		\$7,984,710.98
3000 Operation of Non-Instructional Services					
3200 Student Activities					674,206.40
3300 Community Services					1,248.96
Total Operation of Non-Instructional Services					\$675,455.36
4000 Facilities Acquisition, Construction and Improvement Services					
4200 Existing Site Improvement Services	2,100.00				2,100.00
4400 Architecture and Engineering Services / Educational Specifications - Improvements	45,560.29	51,755.62			97,315.91
4600 Existing Building Improvement Services	179,621.96	2,978,080.00			3,157,701.96
Total Facilities Acquisition, Construction and Improvement	\$227,282.25	\$3,029,835.62			\$3,257,117.87
5000 Other Expenditures and Financing Uses					
5100 Debt Service / Other Expenditures and Financing Uses			1,843,195.00		2,023,849.04
5200 Interfund Transfers - Out					2,045,208.39
Total Other Expenditures and Financing Uses			\$1,843,195.00		\$4,069,057.43
TOTAL ACTUAL EXPENDITURES & OTHER FINANCING USES	\$374,756.54	\$3,029,835.62	\$1,844,145.00		\$31,012,636.18

PSERS Salary Data (Salary Data should relate to the General Fund only)

Amount Description	Amount
Total Salary Base for salaries subject to PSERS withholding	10,235,568.45
Total Federally Funded salaries subject to PSERS withholding	524,478.77
	<hr/>

Title I Expenditure Data

Amount Description	Amount
Expenditures Funded with Current Title I Funds	385,432.00
Expenditures Funded with Carry over Title I Funds	
Total Title I Expenditure Data	<hr/> \$385,432.00 <hr/>

Benefits for Staff Relative to Collective Bargaining Agreements

	OBJECT	COVERED	NOT COVERED	TOTAL
10 General Fund	No Self Insurance data to report			
	211 Medical Insurance	2,429,533.42	262,054.73	2,691,588.15
	212 Dental Insurance	90,421.78	12,010.00	102,431.78
	215 Eye Care Insurance	11,315.00	1,456.00	12,771.00
	216 Prescription Insurance			
	271 Self-Insurance Medical Benefits			
	272 Self-Insurance Dental Benefits			
	275 Self-Insurance Eye Care Benefits			
	276 Self-Insurance Prescription Benefits			
	FUND TOTAL		\$2,531,270.20	\$275,520.73
50 Enterprise Fund	No Self Insurance data to report			
	211 Medical Insurance			
	212 Dental Insurance			
	215 Eye Care Insurance			
	216 Prescription Insurance			
	271 Self-Insurance Medical Benefits			
	272 Self-Insurance Dental Benefits			
	275 Self-Insurance Eye Care Benefits			
	276 Self-Insurance Prescription Benefits			
	FUND TOTAL			
60 Internal Service Fund	No Self Insurance data to report			
	211 Medical Insurance			
	212 Dental Insurance			
	215 Eye Care Insurance			
	216 Prescription Insurance			
	271 Self-Insurance Medical Benefits			
	272 Self-Insurance Dental Benefits			
	275 Self-Insurance Eye Care Benefits			
	276 Self-Insurance Prescription Benefits			
	FUND TOTAL			
Total of All Funds		\$2,531,270.20	\$275,520.73	\$2,806,790.93

LEA : 116191203 Bloomsburg Area SD

Printed 1/29/2020 8:29:10 AM

REVISED SUBMISSION

Page - 1 of 1

Function	Special Education (Prior Year)	Nonspecial Education (Prior Year)	Total (Prior Year)	Special Education (Current Year)	Nonspecial Education (Current Year)	Total (Current Year)
2120 Guidance Services	66,822.30	408,443.02	475,265.32	86,356.92	496,348.35	582,705.27
2140 Psychological Services	53,761.59	17,920.53	71,682.12	58,975.52	12,706.60	71,682.12
2150 Speech Pathology and Audiology Services						
2160 Social Work Services						
2260 Instruction and Curriculum Development Services	181,467.96	114,588.85	296,056.81	184,773.63	111,656.44	296,430.07
2350 Legal and Accounting Services	339.00	19,494.22	19,833.22	708.00	38,410.00	39,118.00
2420 Medical Services						
2440 Nursing Services	41,161.18	250,762.11	291,923.29	47,208.26	271,336.01	318,544.27
2700 Student Transportation Services	166,914.80	645,770.48	812,685.28	293,526.88	609,869.85	903,396.73
Total	\$510,466.83	\$1,456,979.21	\$1,967,446.04	\$671,549.21	\$1,540,327.25	\$2,211,876.46

(PRINCIPAL AMOUNTS ONLY)

GOVERNMENTAL FUNDS/ ACTIVITIES

	Short-Term Borrowing	General Obligation Bonds/Notes	Authority Building Obligations	Other Long-Term Debt	Other Post-Employment Benefits (OPEB)	Compensated Absences	Net Pension Liability	Total
1. Debt at Beginning of Fiscal Year		11,080,000.00	281,225.00		536,599.00	684,662.00	37,069,000.00	49,651,486.00
2. Additional Debt Incurred During Year					916,494.00	273,030.00		1,189,524.00
3. Retirements and Repayments		1,550,000.00	51,424.00				28,000.00	1,629,424.00
4. Debt at End of Fiscal Year		9,530,000.00	229,801.00		1,453,093.00	957,692.00	37,041,000.00	49,211,586.00
5. Accreted Interest at End Of Fiscal Year								
6. Total Debt and Accreted Interest		9,530,000.00	229,801.00		1,453,093.00	957,692.00	37,041,000.00	49,211,586.00
7. Current Portion P&I - Due within 1 year		1,843,195.00	63,997.00					1,907,192.00
8. Interest Paid during current fiscal year		293,195.00	12,573.00					305,768.00

(PRINCIPAL AMOUNTS ONLY)

PROPRIETARY FUNDS

- 1. Debt at Beginning of Fiscal Year
- 2. Additional Debt Incurred During Year
- 3. Retirements and Repayments
- 4. Debt at End of Fiscal Year
- 5. Accreted Interest at End Of Fiscal Year
- 6. Total Debt and Accreted Interest
- 7. Current Portion P&I - Due within 1 year
- 8. Interest Paid during current fiscal year

Total Principal and Interest Payments Made by Your School - All Funds

Function	Fund		Principal (910)	Principal (920)	Interest (830)	Total (Principal +Interest)	Misc Other Uses (990)
5110	10	General Fund		51,424.00	12,573.48	63,997.48	
5110	20	Special Revenue Funds					
5110	30	Capital Projects Funds					
5110	40	Debt Service Fund	1,550,000.00		293,195.00	1,843,195.00	
5110	90	Permanent Fund					
5120	10	General Fund					
5120	20	Special Revenue Funds					
5120	30	Capital Projects Funds					
5120	40	Debt Service Fund					

Total Debt Payments - Governmental Funds			\$1,550,000.00	\$51,424.00	\$305,768.48	\$1,907,192.48	
---	--	--	-----------------------	--------------------	---------------------	-----------------------	--

Function	Fund		Principal (910)	Principal (920)	Interest (830)	Total (Principal +Interest)
5110	50	Enterprise Fund				
5110	60	Internal Service Fund				
5120	50	Enterprise Fund				
5120	60	Internal Service Fund				

Total Debt Payments - Proprietary Funds						
--	--	--	--	--	--	--

Debt Details
Governmental Funds/ Activities

Debt Category	Debt Issue Date (MM/YYYY)	Principal Amounts Only				Current Portion Due Within One Year (Principal and Interest)	Interest Paid During Fiscal Year
		Debt at Beginning of Fiscal Year	Additions	Reductions / Repayments	Debt at End of Fiscal Year		
General Obligation Bonds/Notes – CIB	05/2013	5,415,000.00		475,000.00	4,940,000.00	621,205.00	146,205.00
General Obligation Bonds/Notes – CIB	06/2011	5,665,000.00		1,075,000.00	4,590,000.00	1,221,990.00	146,990.00
Authority Building Obligations – CIB	11/2007	281,225.00		51,424.00	229,801.00	63,997.00	12,573.00
Compensated Absences		684,662.00	273,030.00		957,692.00		
Other Post-Employment Benefits (OPEB)		536,599.00	916,494.00		1,453,093.00		
Net Pension Liability		37,069,000.00		28,000.00	37,041,000.00		
Totals for Debt Entered:		\$49,651,486.00	\$1,189,524.00	\$1,629,424.00	\$49,211,586.00	\$1,907,192.00	\$305,768.00

General Fund (10)

Section 1: Tuition/Purchased Services as Reported within Expenditure Detail

	Amount
Tuition Reported in General Fund Expenditures 1000-560	1,801,785.69
Purchased Services in General Fund Expenditures 1000-594 and 1000-597	107.91

Section 1 Total	\$1,801,893.60
------------------------	-----------------------

Section 2: Tuition Paid to Institution Types During Fiscal Year

	Tuition Paid For Nonspecial Education	Tuition Paid For Special Education	Total
1 1306 Institutions			
2 Institutionalized Children's Programs			
3 Juveniles Incarcerated in Adult Facilities			
4 Residential Treatment Facilities			
5 Other Local Education Agencies	83,556.81	129,170.11	212,726.92
6 Brick and Mortar Charter Schools			
7 Cyber Charter Schools	299,363.33	100,261.76	399,625.09
8 Career and Technology Centers	716,038.00	130,628.00	846,666.00
9 Approved Private Schools		342,875.59	342,875.59
10 PA Chartered Schools for the Deaf and Blind			
11 Private Residential Rehabilitative Institutions			
12 Juvenile Detention Centers			
13 Special Program Jointures			
14 Other Tuition Not Included Elsewhere In This Section			
Section 2 Total	\$1,098,958.14	\$702,935.46	\$1,801,893.60

Food Service / Cafeteria Operations Fund (51)

3000 Operation of Non-Instructional Services

Total

100 Personnel Services – Salaries

100 Personnel Services – Salaries 243,637.00

Total Personnel Services – Salaries \$243,637.00

200 Personnel Services – Employee Benefits

210 Group Insurance – Contracted Provider 77,214.00

220 Social Security Contributions 18,066.00

230 PSERS Retirement Contributions 76,584.00

299 All Other Employee Benefits 2,886.00

Total Personnel Services – Employee Benefits \$174,750.00

400 Purchased Property Services

490 Other Purchased Property Services 1,681.00

Total Purchased Property Services \$1,681.00

600 Supplies

610 General Supplies 17,994.00

630 Food 325,168.00

Total Supplies \$343,162.00

700 Property

740 Depreciation 11,209.00

Total Property \$11,209.00

800 Other Objects

890 Miscellaneous Expenditures 6,449.00

Total Other Objects \$6,449.00

Total 3000 Operation of Non-Instructional Services \$780,888.00

Food Service / Cafeteria Operations Fund (51)

	<u>Elementary</u>	<u>Secondary</u>	<u>Federal</u>	<u>Total</u>
3100 Food Services				
100 Personnel Services – Salaries				
100 Personnel Services – Salaries				243,637.00
Total Personnel Services – Salaries				\$243,637.00
200 Personnel Services – Employee Benefits				
210 Group Insurance – Contracted Provider				77,214.00
220 Social Security Contributions				18,066.00
230 PSERS Retirement Contributions				76,584.00
299 All Other Employee Benefits				2,886.00
Total Personnel Services – Employee Benefits				\$174,750.00
400 Purchased Property Services				
490 Other Purchased Property Services				1,681.00
Total Purchased Property Services				\$1,681.00
600 Supplies				
610 General Supplies				17,994.00
630 Food				325,168.00
Total Supplies				\$343,162.00
700 Property				
740 Depreciation				11,209.00
Total Property				\$11,209.00
800 Other Objects				
890 Miscellaneous Expenditures				6,449.00
Total Other Objects				\$6,449.00
Total 3100 Food Services				\$780,888.00

REVISED SUBMISSION

	<u>Food Service(51)</u>	<u>Child Care Operations(52)</u>	<u>Other Enterprise(58)</u>	<u>Internal Service(60)</u>	<u>Total</u>
3000 <u>Operation of Non-Instructional Services</u>					
3100 Food Services	780,888.00				780,888.00
Total Operation of Non-Instructional Services	\$780,888.00				\$780,888.00
TOTAL ACTUAL EXPENDITURES & OTHER FINANCING USES	\$780,888.00				\$780,888.00